

Certificate of Analysis

Product: **Artemisia herba-alba organic 7503**

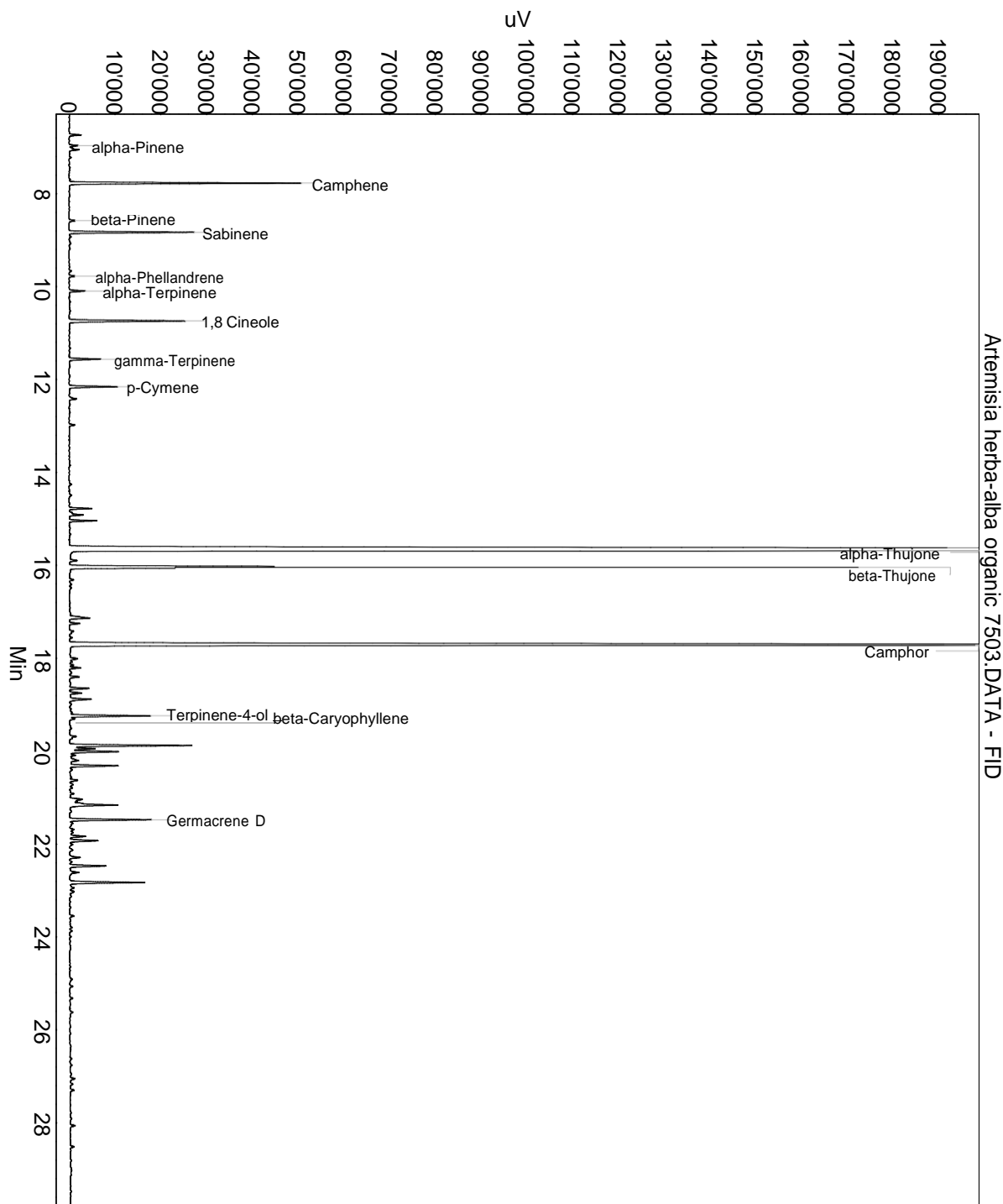
Lot: 7503

Date of analysis: 18.09.2020 13:46:07

System: GC-430 FID

Column: BGB Wax 60m / 0.25mm / 0.25um

Method: 180306 essential basis 60min



This data sheet was issued to the best of our knowledge and is supplied without warranty for its correctness or accuracy.

Certificate of Analysis

Product: **Artemisia herba-alba organic 7503**

Lot: 7503

Date of analysis: 18.09.2020 13:46:07

System: GC-430 FID

Column: BGB Wax 60m / 0.25mm / 0.25um

Method: 180306 essential basis 60min

Index	Name	Time [Min]	Area [uV.Min]	Area % [%]	Allergene
1		6.74	75.6	0.115	
2	alpha-Pinene	6.96	55.8	0.085	
3		7.02	20.8	0.032	
4		7.05	63.1	0.096	
5	Camphene	7.77	1485.8	2.252	
6	beta-Pinene	8.58	42.3	0.064	
7	Sabinene	8.83	801.9	1.215	
8	alpha-Phellandrene	9.77	38.5	0.058	
9	alpha-Terpinene	10.09	105.9	0.161	
10	1,8 Cineole	10.74	837.0	1.269	
11	gamma-Terpinene	11.56	214.2	0.325	
12	p-Cymene	12.15	329.1	0.499	
13		12.42	62.2	0.094	
14		12.98	39.0	0.059	
15		14.78	142.2	0.215	
16		14.91	124.4	0.189	
17		15.04	173.1	0.262	
18	alpha-Thujone	15.67	36720.0	55.656	
19		15.90	57.2	0.087	
20	beta-Thujone	16.04	5654.1	8.570	
21		16.31	29.1	0.044	
22		16.41	19.0	0.029	
23		17.12	50.5	0.077	
24		17.14	133.8	0.203	
25		17.25	68.9	0.104	
26		17.42	28.6	0.043	
27		17.46	15.9	0.024	
28	Camphor	17.71	12115.6	18.364	
29		18.01	60.8	0.092	
30		18.15	40.2	0.061	
31		18.21	72.3	0.110	
32		18.40	68.2	0.103	
33		18.65	128.3	0.195	
34		18.75	97.9	0.148	
35		18.88	174.7	0.265	
36	Terpinene-4-ol	19.24	556.3	0.843	
37	beta-Caryophyllene	19.30	33.5	0.051	
38		19.68	71.7	0.109	

This data sheet was issued to the best of our knowledge and is supplied without warranty for its correctness or accuracy.

Certificate of Analysis

Product: **Artemisia herba-alba organic 7503**

Lot: 7503

Date of analysis: 18.09.2020 13:46:07

System: GC-430 FID

Column: BGB Wax 60m / 0.25mm / 0.25um

Method: 180306 essential basis 60min

Index	Name	Time [Min]	Area [uV.Min]	Area % [%]	Allergene
39		19.88	904.7	1.371	
40		19.95	198.2	0.300	
41		20.01	375.2	0.569	
42		20.09	44.3	0.067	
43		20.20	116.0	0.176	
44		20.31	354.8	0.538	
45		20.40	24.2	0.037	
46		20.62	60.6	0.092	
47		20.72	26.8	0.041	
48		20.92	24.9	0.038	
49		21.03	161.5	0.245	
50		21.13	70.4	0.107	
51		21.16	378.2	0.573	
52	Germacrene D	21.48	579.2	0.878	
53		21.55	45.5	0.069	
54		21.69	39.5	0.060	
55		21.75	36.0	0.055	
56		21.83	127.7	0.194	
57		21.93	224.6	0.340	
58		22.01	25.3	0.038	
59		22.29	82.4	0.125	
60		22.47	299.0	0.453	
61		22.61	86.9	0.132	
62		22.83	554.9	0.841	
63		22.94	44.2	0.067	
64		23.02	41.0	0.062	
65		23.55	33.2	0.050	
66		27.05	38.7	0.059	
67		27.30	30.2	0.046	
68		28.06	41.5	0.063	
69		28.51	27.0	0.041	
70		30.08	72.4	0.110	
Total			65976.5	100.000	

This data sheet was issued to the best of our knowledge and is supplied without warranty for its correctness or accuracy.