

Certificate of Analysis

Product: **Boswellia carterii organic 4802**

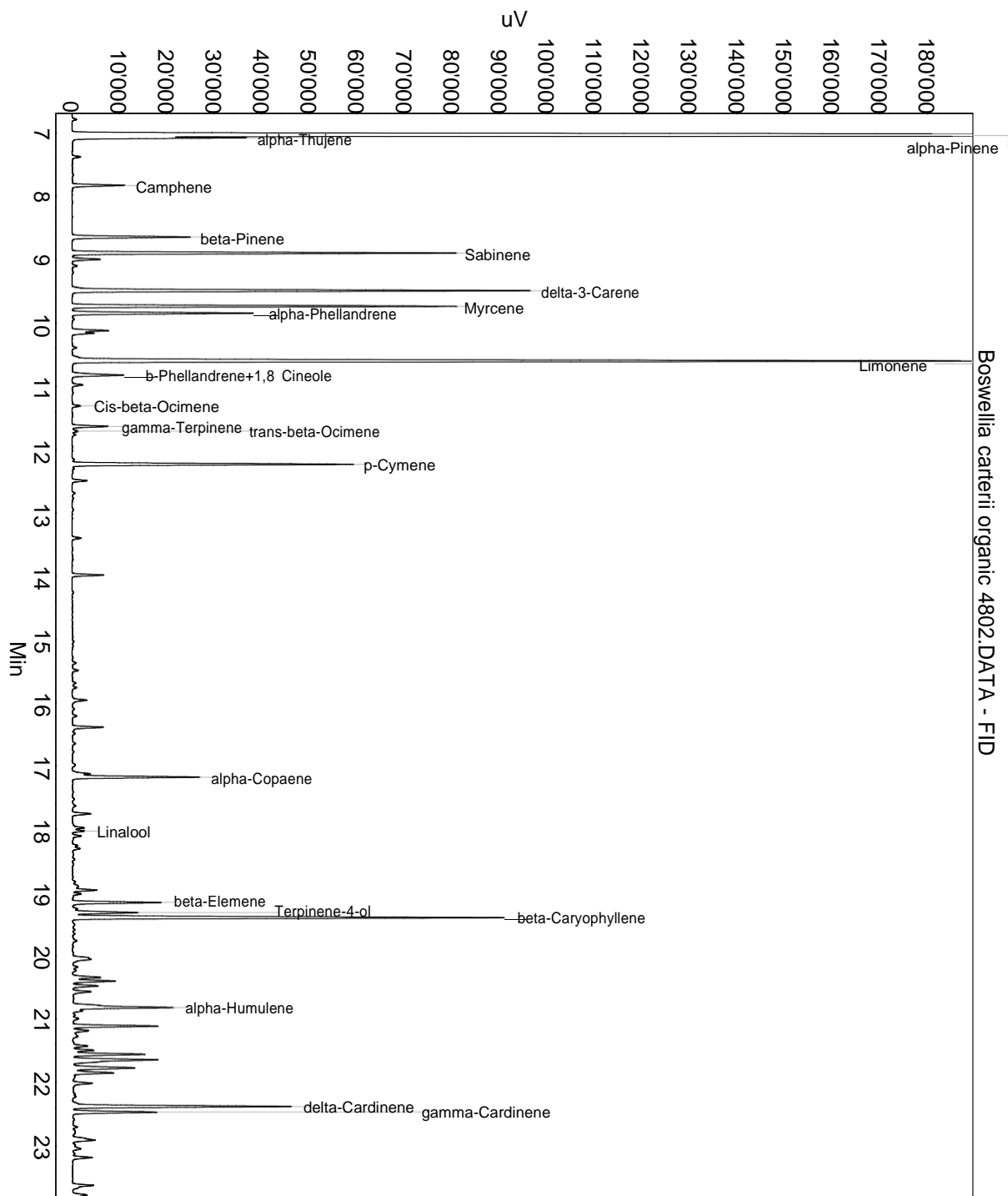
Lot: 4802

Date of analysis: 03.06.2019 16:30:28

System: GC-430 FID

Column: BGB Wax 60m / 0.25mm / 0.25um

Method: 180306 essential basis 60min



This data sheet was issued to the best of our knowledge and is supplied without warranty for its correctness or accuracy.

Certificate of Analysis

Product: **Boswellia carterii organic 4802**

Lot: 4802

Date of analysis: 03.06.2019 16:30:28

System: GC-430 FID

Column: BGB Wax 60m / 0.25mm / 0.25um

Method: 180306 essential basis 60min

Index	Name	Time [Min]	Area [uV.Min]	Area % [%]	Allergene
1		6.78	28.2	0.047	
2	alpha-Pinene	7.04	20531.5	34.175	
3		7.06	18.1	0.030	
4	alpha-Thujene	7.07	829.2	1.380	
5		7.37	55.9	0.093	
6	Camphene	7.83	325.7	0.542	
7	beta-Pinene	8.64	751.1	1.250	
8	Sabinene	8.90	2358.7	3.926	
9		8.99	177.5	0.295	
10		9.10	30.3	0.050	
11	delta-3-Carene	9.49	2920.9	4.862	
12	Myrcene	9.74	2270.6	3.779	
13	alpha-Phellandrene	9.85	1141.7	1.900	
14		10.12	235.2	0.392	
15		10.16	138.0	0.230	
16		10.39	28.2	0.047	
17	Limonene	10.60	6383.8	10.626	Directive 2003/15EC (7th)
18	b-Phellandrene+1,8 Cineole	10.82	384.4	0.640	
19		10.98	69.3	0.115	
20	Cis-beta-Ocimene	11.31	55.6	0.093	
21	gamma-Terpinene	11.63	231.8	0.386	
22	trans-beta-Ocimene	11.71	44.1	0.073	
23		11.76	24.9	0.041	
24	p-Cymene	12.23	1787.8	2.976	
25		12.30	15.8	0.026	
26		12.49	98.0	0.163	
27		13.40	61.9	0.103	
28		13.98	189.1	0.315	
29		15.37	31.3	0.052	
30		15.49	45.0	0.075	
31		15.69	28.2	0.047	
32		15.76	32.0	0.053	
33		15.96	115.9	0.193	
34		16.21	33.8	0.056	
35		16.39	206.8	0.344	
36		17.12	131.7	0.219	
37	alpha-Copaene	17.18	838.2	1.395	
38		17.76	132.1	0.220	

This data sheet was issued to the best of our knowledge and is supplied without warranty for its correctness or accuracy.

Certificate of Analysis

Product: **Boswellia carterii organic 4802**

Lot: 4802

Date of analysis: 03.06.2019 16:30:28

System: GC-430 FID

Column: BGB Wax 60m / 0.25mm / 0.25um

Method: 180306 essential basis 60min

Index	Name	Time [Min]	Area [uV.Min]	Area % [%]	Allergene
39		17.98	81.9	0.136	
40	Linalool	18.03	76.7	0.128	Directive 2003/15EC (7th)
41		18.11	65.0	0.108	
42		18.30	35.7	0.059	
43		18.91	50.9	0.085	
44		18.96	158.9	0.265	
45		19.02	56.9	0.095	
46	beta-Elemene	19.16	574.3	0.956	
47	Terpinene-4-ol	19.32	499.0	0.831	
48	beta-Caryophyllene	19.40	2937.9	4.890	
49		19.51	17.8	0.030	
50		20.04	69.0	0.115	
51		20.05	81.4	0.136	
52		20.18	35.8	0.060	
53		20.24	27.6	0.046	
54		20.34	215.2	0.358	
55		20.40	294.0	0.489	
56		20.48	175.8	0.293	
57		20.57	130.5	0.217	
58		20.79	107.0	0.178	
59	alpha-Humulene	20.82	803.8	1.338	
60		20.94	14.8	0.025	
61		20.99	48.5	0.081	
62		21.11	560.6	0.933	
63		21.19	122.7	0.204	
64		21.27	59.5	0.099	
65		21.43	109.6	0.182	
66		21.49	137.3	0.228	
67		21.56	504.1	0.839	
68		21.64	721.2	1.200	
69		21.77	493.2	0.821	
70		21.85	282.5	0.470	
71		22.02	124.6	0.207	
72	delta-Cardinene	22.38	1475.9	2.457	
73	gamma-Cardinene	22.47	565.0	0.940	
74		22.71	29.6	0.049	
75		22.80	36.6	0.061	
76		22.91	229.3	0.382	

This data sheet was issued to the best of our knowledge and is supplied
without warranty for its correctness or accuracy.

Certificate of Analysis

Product: **Boswellia carterii organic 4802**

Lot: 4802

Date of analysis: 03.06.2019 16:30:28

System: GC-430 FID

Column: BGB Wax 60m / 0.25mm / 0.25um

Method: 180306 essential basis 60min

Index	Name	Time [Min]	Area [uV.Min]	Area % [%]	Allergene
77		23.05	88.3	0.147	
78		23.13	15.7	0.026	
79		23.19	135.5	0.225	
80		23.63	183.3	0.305	
81		23.78	127.6	0.212	
82		23.88	143.7	0.239	
83		24.02	30.4	0.051	
84		24.18	48.0	0.080	
85		24.65	27.0	0.045	
86		24.86	30.8	0.051	
87		25.29	60.9	0.101	
88		25.53	158.8	0.264	
89		26.01	40.8	0.068	
90	Caryophyllene oxide	26.50	722.5	1.203	
91		26.59	18.1	0.030	
92		26.93	25.7	0.043	
93		27.16	26.9	0.045	
94		27.42	138.6	0.231	
95		27.59	154.4	0.257	
96		27.70	121.0	0.201	
97		27.81	61.3	0.102	
98		28.00	247.3	0.412	
99		28.14	50.6	0.084	
100		28.35	133.3	0.222	
101		28.60	49.0	0.081	
102		29.40	721.6	1.201	
103		29.58	115.1	0.192	
104		29.68	52.6	0.088	
105		29.74	23.5	0.039	
106		29.88	22.2	0.037	
107		29.95	25.2	0.042	
108		30.04	77.6	0.129	
109		30.55	114.8	0.191	
110		31.09	142.2	0.237	
111		31.85	41.7	0.069	
112		32.78	65.0	0.108	
113		33.56	159.9	0.266	
114		33.77	95.6	0.159	

This data sheet was issued to the best of our knowledge and is supplied without warranty for its correctness or accuracy.

Certificate of Analysis

Product: **Boswellia carterii organic 4802**

Lot: 4802

Date of analysis: 03.06.2019 16:30:28

System: GC-430 FID

Column: BGB Wax 60m / 0.25mm / 0.25um

Method: 180306 essential basis 60min

Index	Name	Time [Min]	Area [uV.Min]	Area % [%]	Allergene
115		46.68	789.7	1.314	
Total			60078.1	100.000	

This data sheet was issued to the best of our knowledge and is supplied without warranty for its correctness or accuracy.