

# Certificate of Analysis

Product: **Cinnamomum camphora 1759**

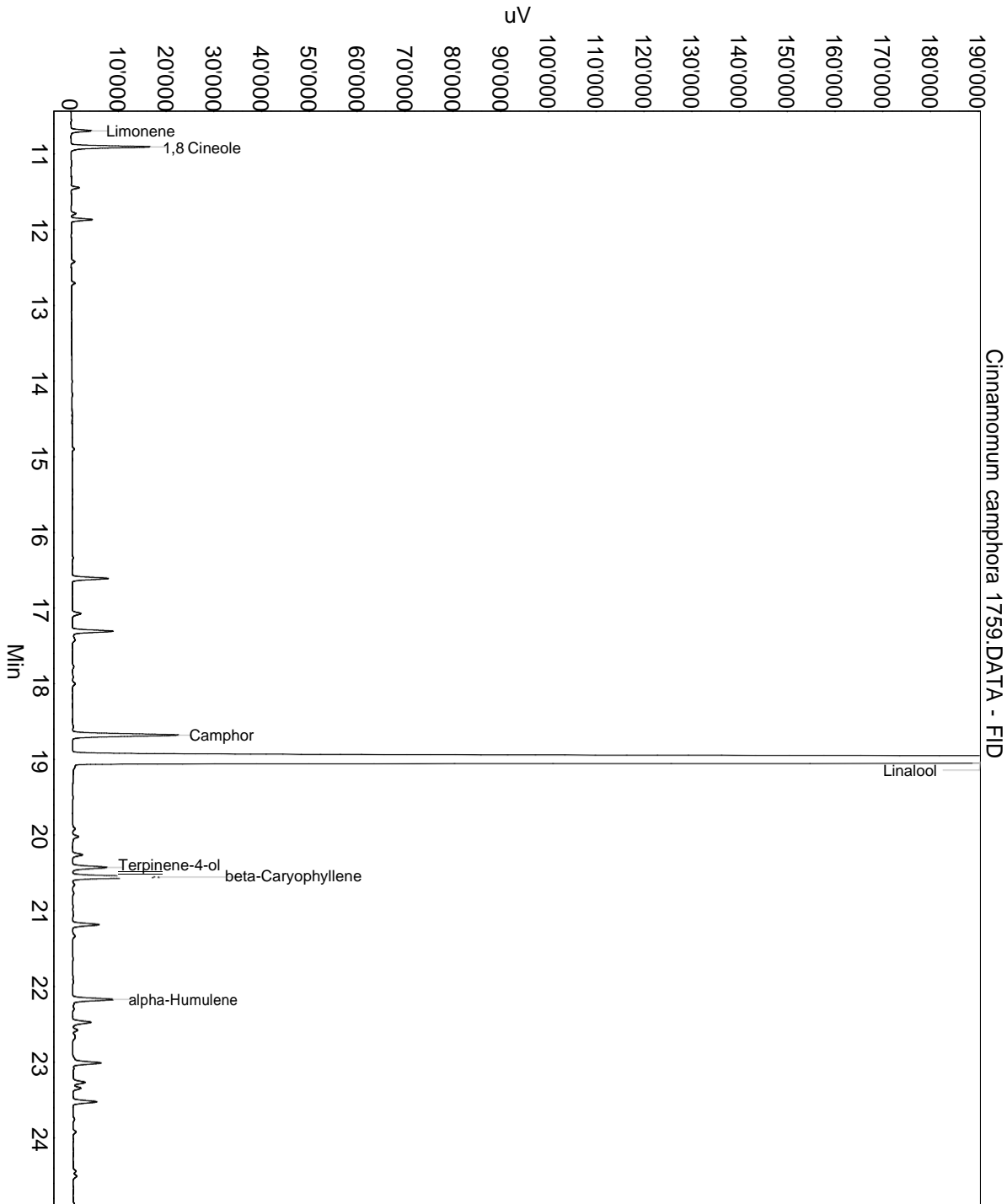
Lot: 1759

Date of analysis: 19.05.2016 16:40:01

System: GC-430 FID

Column: BGB Wax 60m / 0.25mm / 0.25um

Method: 120102 essential basis 60



This data sheet was issued to the best of our knowledge and is supplied without warranty for its correctness or accuracy.

## Certificate of Analysis

Product: **Cinnamomum camphora 1759**

Lot: 1759

Date of analysis: 19.05.2016 16:40:01

System: GC-430 FID

Column: BGB Wax 60m / 0.25mm / 0.25um

Method: 120102 essential basis 60

Index	Name	Time [Min]	Area [uV.Min]	Area % [%]	Allergene
1	alpha-Pinene	7.08	117.3	0.147	
2	Limonene	10.69	141.6	0.177	Directive 2003/15EC (7th)
3	1,8 Cineole	10.91	562.7	0.705	
4		16.61	273.3	0.342	
5		17.31	307.5	0.385	
6	Camphor	18.68	905.9	1.135	
7	Linalool	19.03	75289.6	94.292	
8	Terpinene-4-ol	20.43	281.9	0.353	
9	beta-Caryophyllene	20.55	687.3	0.861	
10		21.18	214.5	0.269	
11	alpha-Humulene	22.17	345.2	0.432	
12		22.47	160.2	0.201	
13		23.01	228.2	0.286	
14		23.52	200.4	0.251	
15	Cedrol	28.79	131.8	0.165	
Total			79847.4	100.000	

This data sheet was issued to the best of our knowledge and is supplied without warranty for its correctness or accuracy.