

Certificate of Analysis

Product: **Lavandula angustifolia organic 7721**

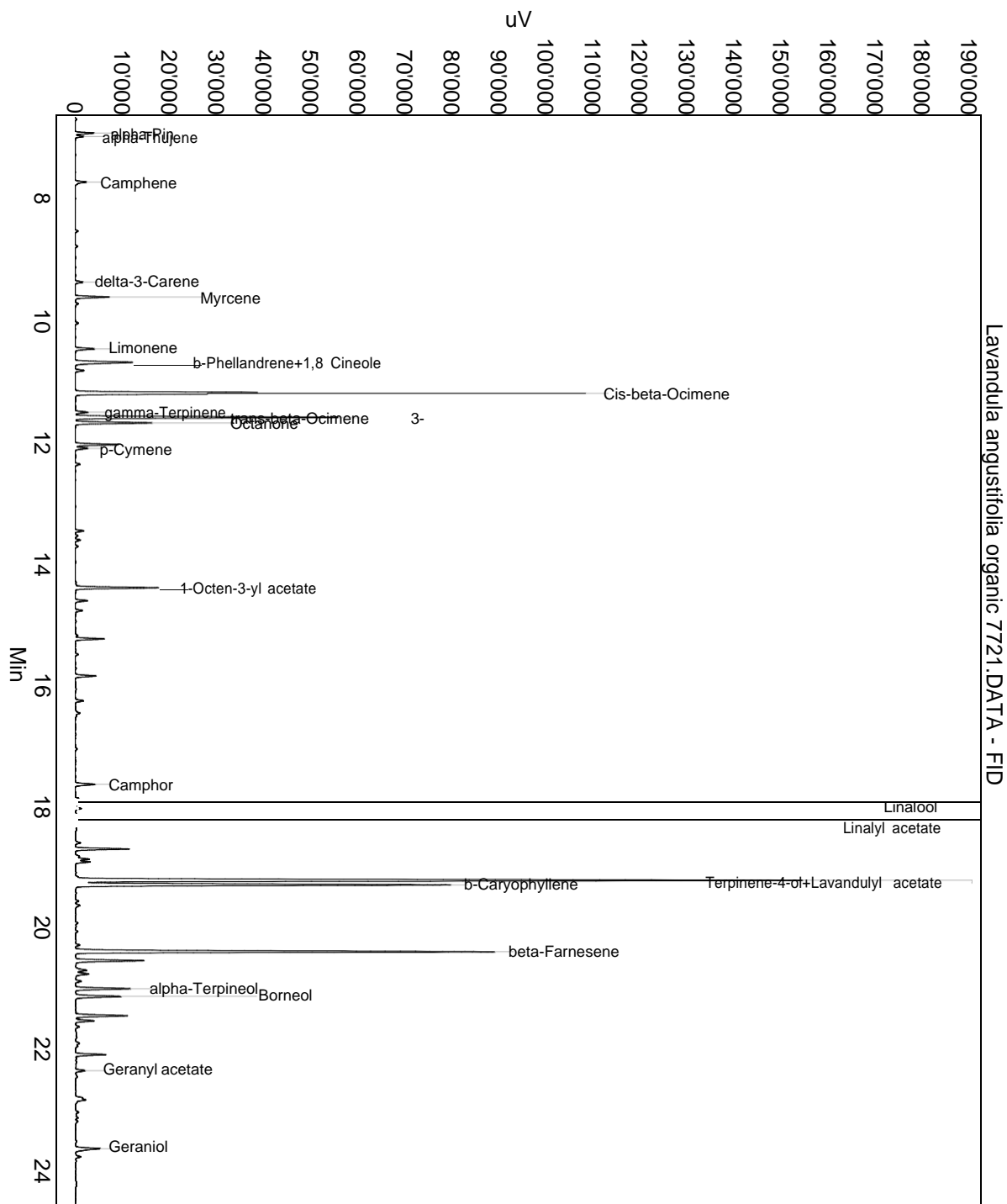
Lot: 7721

Date of analysis: 06.11.2020 14:40:29

System: GC-430 FID

Column: BGB Wax 60m / 0.25mm / 0.25um

Method: 180306 essential basis 60min



This data sheet was issued to the best of our knowledge and is supplied without warranty for its correctness or accuracy.

Certificate of Analysis

Product: **Lavandula angustifolia organic 7721**

Lot: 7721

Date of analysis: 06.11.2020 14:40:29

System: GC-430 FID

Column: BGB Wax 60m / 0.25mm / 0.25um

Method: 180306 essential basis 60min

Index	Name	Time [Min]	Area [uV.Min]	Area % [%]	Allergene
1	alpha-Pinene	6.94	113.3	0.190	
2	alpha-Thujene	6.99	54.3	0.091	
3	Camphene	7.74	83.4	0.140	
4	delta-3-Carene	9.39	54.4	0.091	
5	Myrcene	9.63	211.2	0.354	
6		10.07	22.0	0.037	
7	Limonene	10.49	127.5	0.214	Directive 2003/15EC (7th)
8	b-Phellandrene+1,8 Cineole	10.71	453.1	0.760	
9		10.85	55.3	0.093	
10	Cis-beta-Ocimene	11.22	3128.9	5.247	
11	gamma-Terpinene	11.53	84.7	0.142	
12	trans-beta-Ocimene	11.62	1611.2	2.702	
13	3-Octanone	11.71	473.5	0.794	
14		12.07	272.3	0.457	
15	p-Cymene	12.13	85.4	0.143	
16		12.39	31.1	0.052	
17		13.49	72.3	0.121	
18		13.64	32.3	0.054	
19	1-Octen-3-yl acetate	14.42	508.4	0.853	
20		14.64	77.0	0.129	
21		14.80	50.0	0.084	
22		15.26	182.6	0.306	
23		15.88	134.8	0.226	
24		16.28	57.6	0.097	
25		16.49	46.4	0.078	
26	Camphor	17.66	144.1	0.242	
27	Linalool	17.96	16310.9	27.351	Directive 2003/15EC (7th)
28		18.06	56.6	0.095	
29	Linalyl acetate	18.29	21681.9	36.357	
30		18.61	36.5	0.061	
31		18.71	323.6	0.543	
32		18.88	126.2	0.212	
33		18.93	97.3	0.163	
34	Terpinene-4-ol+Lavandulyl acetate	19.23	4783.3	8.021	
35	b-Caryophyllene	19.31	2490.3	4.176	
36		19.57	20.6	0.035	
37		19.64	37.3	0.063	
38		20.30	25.9	0.043	

This data sheet was issued to the best of our knowledge and is supplied without warranty for its correctness or accuracy.

Certificate of Analysis

Product: **Lavandula angustifolia organic 7721**

Lot: 7721

Date of analysis: 06.11.2020 14:40:29

System: GC-430 FID

Column: BGB Wax 60m / 0.25mm / 0.25um

Method: 180306 essential basis 60min

Index	Name	Time [Min]	Area [uV.Min]	Area % [%]	Allergene
39	beta-Farnesene	20.41	2663.6	4.466	
40		20.55	455.8	0.764	
41		20.71	93.8	0.157	
42		20.77	104.9	0.176	
43		20.89	38.6	0.065	
44	alpha-Terpineol	21.01	363.1	0.609	
45	Borneol	21.14	324.8	0.545	
46		21.46	359.0	0.602	
47		21.54	122.0	0.205	
48		21.91	46.4	0.078	
49		22.10	189.3	0.317	
50	Geranyl acetate	22.36	65.0	0.109	
51		22.81	43.0	0.072	
52		22.84	82.2	0.138	
53	Geraniol	23.64	163.8	0.275	Directive 2003/15EC (7th)
54		23.66	43.5	0.073	
55		23.78	35.5	0.060	
56		26.22	24.1	0.040	
57	Caryophyllene oxide	26.40	173.9	0.292	
58		26.53	36.8	0.062	
59		29.28	49.8	0.084	
Total			59636.3	100.000	

This data sheet was issued to the best of our knowledge and is supplied without warranty for its correctness or accuracy.