

# Certificate of Analysis

Product: **Lavandula burnati organic 5392**

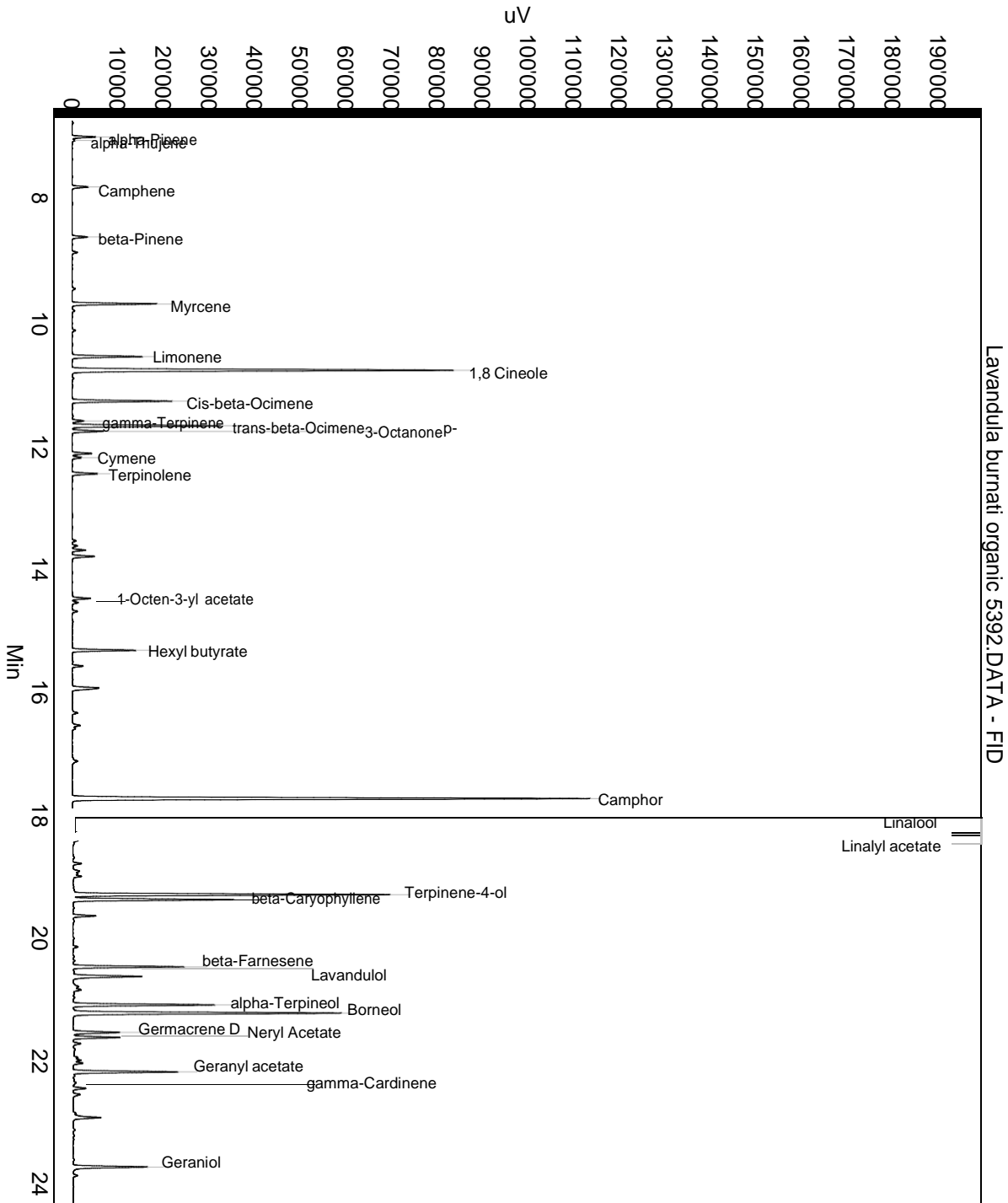
Lot: 5392

Date of analysis: 24.09.2019 10:57:27

System: GC-430 FID

Column: BGB Wax 60m / 0.25mm / 0.25um

Method: 180306 essential basis 60min



This data sheet was issued to the best of our knowledge and is supplied without warranty for its correctness or accuracy.

## Certificate of Analysis

Product: **Lavandula burnati organic 5392**

Lot: 5392

Date of analysis: 24.09.2019 10:57:27

System: GC-430 FID

Column: BGB Wax 60m / 0.25mm / 0.25um

Method: 180306 essential basis 60min

Index	Name	Time [Min]	Area [uV.Min]	Area % [%]	Allergene
1	alpha-Pinene	7.01	148.1	0.206	
2	alpha-Thujene	7.06	20.9	0.029	
3	Camphene	7.82	108.1	0.150	
4	beta-Pinene	8.63	107.5	0.149	
5		8.88	35.7	0.050	
6		9.48	22.0	0.031	
7	Myrcene	9.72	533.6	0.742	
8	Limonene	10.58	475.1	0.660	Directive 2003/15EC (7th)
9	1,8 Cineole	10.80	2739.6	3.809	
10	Cis-beta-Ocimene	11.30	634.6	0.882	
11	gamma-Terpinene	11.62	80.5	0.112	
12	trans-beta-Ocimene	11.70	953.0	1.325	
13	3-Octanone	11.79	208.0	0.289	
14		12.15	126.8	0.176	
15	p-Cymene	12.22	66.2	0.092	
16	Terpinolene	12.48	173.0	0.240	
17		13.57	25.3	0.035	
18		13.65	36.3	0.050	
19		13.72	86.7	0.121	
20		13.83	156.0	0.217	
21	1-Octen-3-yl acetate	14.51	117.5	0.163	
22		14.58	42.8	0.060	
23		14.72	36.2	0.050	
24	Hexyl butyrate	15.35	404.1	0.562	
25		15.61	69.9	0.097	
26		15.96	253.3	0.352	
27		16.37	43.1	0.060	
28		16.57	64.2	0.089	
29		16.62	25.2	0.035	
30		17.15	51.9	0.072	
31	Camphor	17.76	3857.0	5.362	
32	Linalool	18.06	27912.2	38.803	Directive 2003/15EC (7th)
33		18.24	69.6	0.097	
34	Linalyl acetate	18.38	21319.1	29.637	
35		18.43	67.8	0.094	
36		18.81	57.8	0.080	
37		18.93	57.7	0.080	
38		18.97	33.7	0.047	

This data sheet was issued to the best of our knowledge and is supplied without warranty for its correctness or accuracy.

## Certificate of Analysis

**Product: Lavandula burnati organic 5392**

Lot: 5392

Date of analysis: 24.09.2019 10:57:27

System: GC-430 FID

Column: BGB Wax 60m / 0.25mm / 0.25um

Method: 180306 essential basis 60min

Index	Name	Time [Min]	Area [uV.Min]	Area % [%]	Allergene
39		19.01	66.0	0.092	
40	Terpinene-4-ol	19.31	2100.1	2.919	
41	beta-Caryophyllene	19.39	1070.3	1.488	
42		19.66	145.3	0.202	
43		20.16	36.6	0.051	
44	beta-Farnesene	20.48	721.3	1.003	
45	Lavandulol	20.64	518.3	0.721	
46		20.80	57.1	0.079	
47		20.86	64.1	0.089	
48	alpha-Terpineol	21.10	963.4	1.339	
49	Borneol	21.23	1937.2	2.693	
50	Germacrene D	21.55	337.9	0.470	
51	Neryl Acetate	21.63	310.2	0.431	
52		21.73	53.0	0.074	
53		22.00	81.8	0.114	
54		22.05	63.4	0.088	
55	Geranyl acetate	22.19	724.6	1.007	
56	gamma-Cardinene	22.45	87.9	0.122	
57		22.55	61.2	0.085	
58		22.93	189.5	0.263	
59	Geraniol	23.73	529.4	0.736	Directive 2003/15EC (7th)
60		23.87	32.4	0.045	
61	Caryophyllene oxide	26.48	61.6	0.086	
62		29.38	65.7	0.091	
63	alpha-Bisabolol	30.12	274.9	0.382	
64	Coumarin	36.35	159.4	0.222	Directive 2003/15EC (7th)
Total			71932.9	100.000	

This data sheet was issued to the best of our knowledge and is supplied without warranty for its correctness or accuracy.