

Certificate of Analysis

Product: Litsea cubeba organic 7851

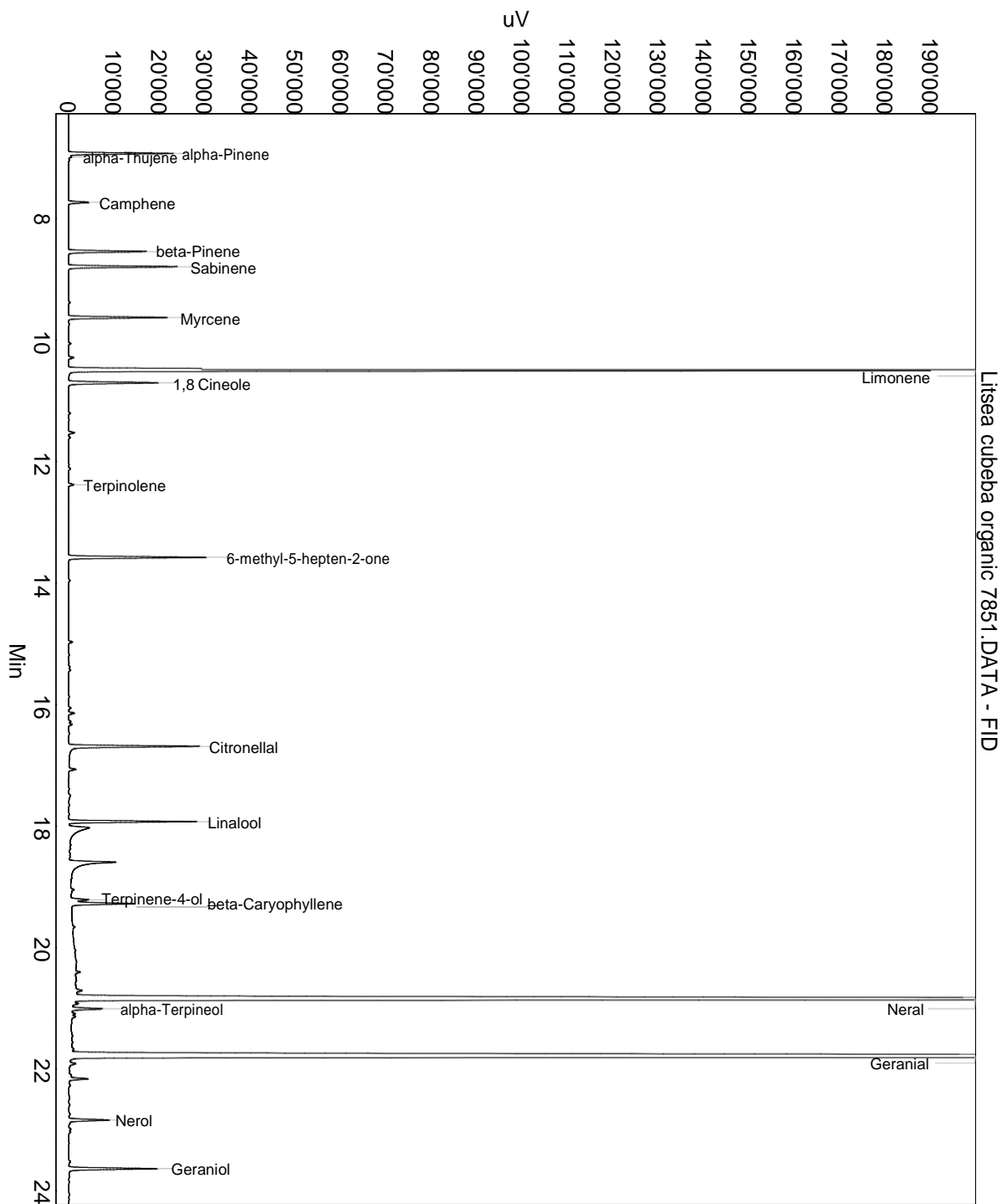
Lot: 7851

Date of analysis: 17.11.2020 12:24:22

System: GC-430 FID

Column: BGB Wax 60m / 0.25mm / 0.25um

Method: 180306 essential basis 60min



This data sheet was issued to the best of our knowledge and is supplied without warranty for its correctness or accuracy.

Certificate of Analysis

Product: Litsea cubeba organic 7851

Lot: 7851

Date of analysis: 17.11.2020 12:24:22

System: GC-430 FID

Column: BGB Wax 60m / 0.25mm / 0.25um

Method: 180306 essential basis 60min

Index	Name	Time [Min]	Area [uV.Min]	Area % [%]	Allergene
1	alpha-Pinene	6.93	637.9	1.062	
2	alpha-Thujene	6.99	20.6	0.034	
3	Camphene	7.74	135.5	0.226	
4	beta-Pinene	8.54	520.2	0.866	
5	Sabinene	8.79	705.0	1.173	
6	Myrcene	9.63	616.9	1.027	
7		10.29	35.2	0.059	
8	Limonene	10.50	7166.2	11.925	Directive 2003/15EC (7th)
9	1,8 Cineole	10.70	619.8	1.031	
10		11.53	39.6	0.066	
11	Terpinolene	12.38	38.1	0.063	
12	6-methyl-5-hepten-2-one	13.58	911.9	1.518	
13		14.97	26.6	0.044	
14		16.14	38.4	0.064	
15	Citronellal	16.69	921.6	1.534	
16		17.07	48.2	0.080	
17	Linalool	17.93	812.9	1.353	Directive 2003/15EC (7th)
18		18.03	344.0	0.572	
19		18.59	546.4	0.909	
20	Terpinene-4-ol	19.21	128.2	0.213	
21	beta-Caryophyllene	19.28	471.0	0.784	
22		20.40	29.1	0.048	
23		20.71	63.1	0.105	
24	Neral	20.85	18022.3	29.991	(= Citral) Directive 2003/15EC (7th)
25		20.92	38.9	0.065	
26	alpha-Terpineol	21.01	205.3	0.342	
27		21.09	22.6	0.038	
28		21.14	32.0	0.053	
29	Geranial	21.79	25322.4	42.139	(= Citral) Directive 2003/15EC (7th)
30		21.91	50.0	0.083	
31		22.16	135.9	0.226	
32	Nerol	22.84	288.1	0.480	
33	Geraniol	23.64	603.8	1.005	Directive 2003/15EC (7th)
34		26.07	54.8	0.091	
35		26.39	72.7	0.121	
36		26.99	37.6	0.063	
37		31.45	61.8	0.103	
38		32.43	267.5	0.445	

This data sheet was issued to the best of our knowledge and is supplied
without warranty for its correctness or accuracy.

Certificate of Analysis

Product: Litsea cubeba organic 7851

Lot: 7851

Date of analysis: 17.11.2020 12:24:22

System: GC-430 FID

Column: BGB Wax 60m / 0.25mm / 0.25um

Method: 180306 essential basis 60min

Index	Name	Time [Min]	Area [uV.Min]	Area % [%]	Allergene
Total			60092.1	100.000	

This data sheet was issued to the best of our knowledge and is supplied without warranty for its correctness or accuracy.