

# Certificate of Analysis

Product: **Salvia sclarea organic 5952**

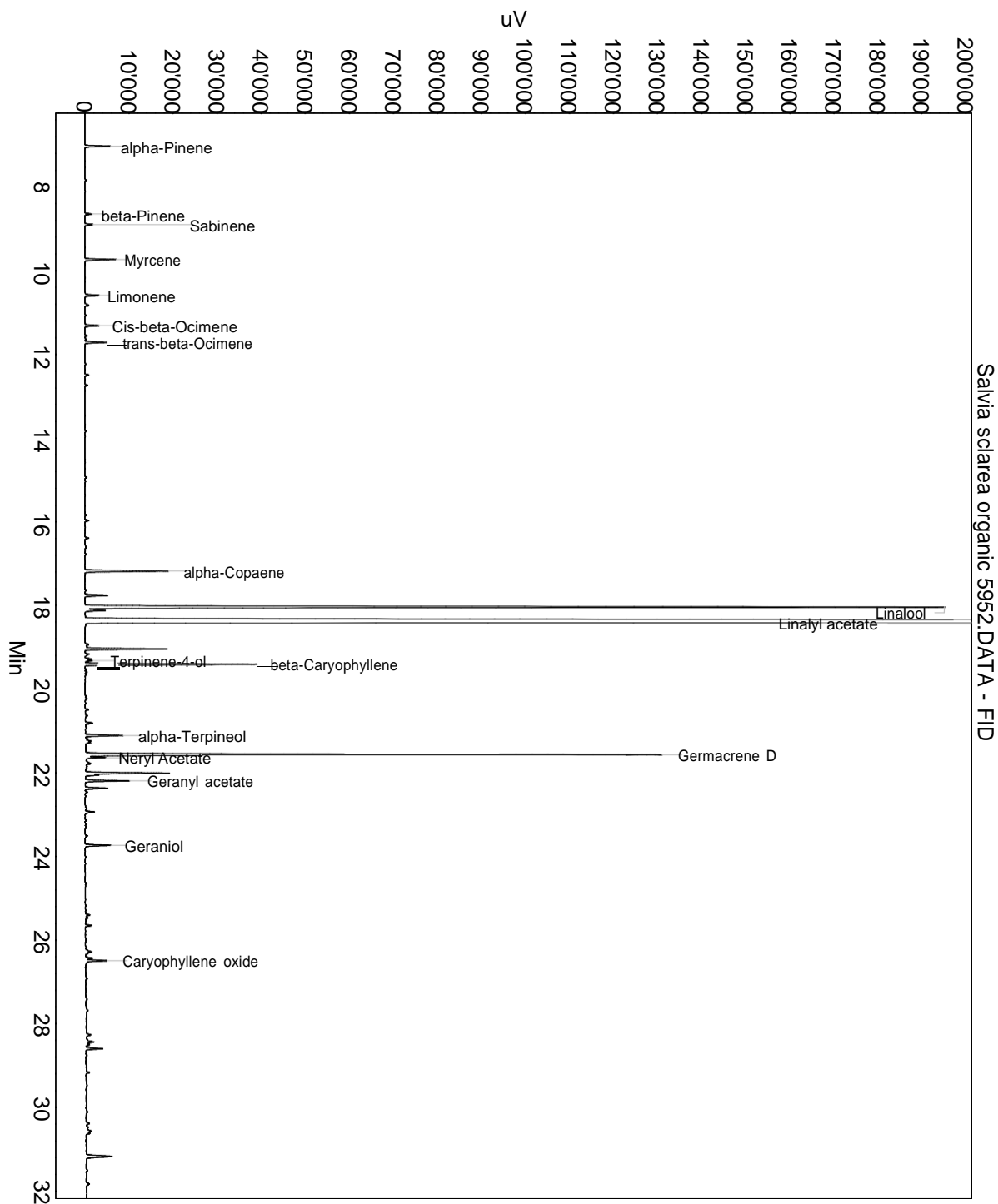
Lot: 5952

Date of analysis: 16.12.2019 15:38:30

System: GC-430 FID

Column: BGB Wax 60m / 0.25mm / 0.25um

Method: 180306 essential basis 60min



This data sheet was issued to the best of our knowledge and is supplied without warranty for its correctness or accuracy.

## Certificate of Analysis

Product: **Salvia sclarea organic 5952**

Lot: 5952

Date of analysis: 16.12.2019 15:38:30

System: GC-430 FID

Column: BGB Wax 60m / 0.25mm / 0.25um

Method: 180306 essential basis 60min

Index	Name	Time [Min]	Area [uV.Min]	Area % [%]	Allergene
1	alpha-Pinene	7.02	166.9	0.251	
2	beta-Pinene	8.65	51.3	0.077	
3	Sabinene	8.90	56.5	0.085	
4	Myrcene	9.73	211.1	0.317	
5	Limonene	10.59	101.7	0.153	Directive 2003/15EC (7th)
6	Cis-beta-Ocimene	11.31	98.3	0.148	
7	trans-beta-Ocimene	11.71	149.5	0.225	
8		12.49	28.2	0.042	
9		15.97	29.5	0.044	
10	alpha-Copaene	17.18	623.8	0.937	
11		17.76	174.4	0.262	
12	Linalool	18.04	6735.1	10.119	Directive 2003/15EC (7th)
13		18.12	158.6	0.238	
14	Linalyl acetate	18.41	48320.3	72.595	
15		19.04	552.4	0.830	
16		19.28	40.5	0.061	
17	Terpinene-4-ol	19.32	53.5	0.080	
18	beta-Caryophyllene	19.41	1189.7	1.787	
19		20.81	57.2	0.086	
20	alpha-Terpineol	21.11	269.4	0.405	
21		21.19	18.5	0.028	
22		21.24	39.0	0.059	
23		21.28	36.3	0.055	
24	Germacrene D	21.57	4400.1	6.611	
25	Neryl Acetate	21.64	143.9	0.216	
26		22.01	605.6	0.910	
27		22.05	89.9	0.135	
28	Geranyl acetate	22.19	301.3	0.453	
29		22.37	163.4	0.246	
30		22.94	73.5	0.110	
31	Geraniol	23.74	188.7	0.284	Directive 2003/15EC (7th)
32		25.40	41.2	0.062	
33		25.65	43.8	0.066	
34		26.28	80.6	0.121	
35		26.43	51.6	0.078	
36	Caryophyllene oxide	26.49	160.4	0.241	
37		28.27	43.9	0.066	
38		28.44	79.7	0.120	

This data sheet was issued to the best of our knowledge and is supplied without warranty for its correctness or accuracy.

## Certificate of Analysis

Product: **Salvia sclarea organic 5952**

Lot: 5952

Date of analysis: 16.12.2019 15:38:30

System: GC-430 FID

Column: BGB Wax 60m / 0.25mm / 0.25um

Method: 180306 essential basis 60min

Index	Name	Time [Min]	Area [uV.Min]	Area % [%]	Allergene
39		28.50	26.1	0.039	
40		28.60	139.5	0.210	
41		31.17	278.2	0.418	
42	Sclareol	88.37	488.3	0.734	
Total			66561.5	100.000	

This data sheet was issued to the best of our knowledge and is supplied without warranty for its correctness or accuracy.