

Certificate of Analysis

Product: **Valeriana officinalis 7331**

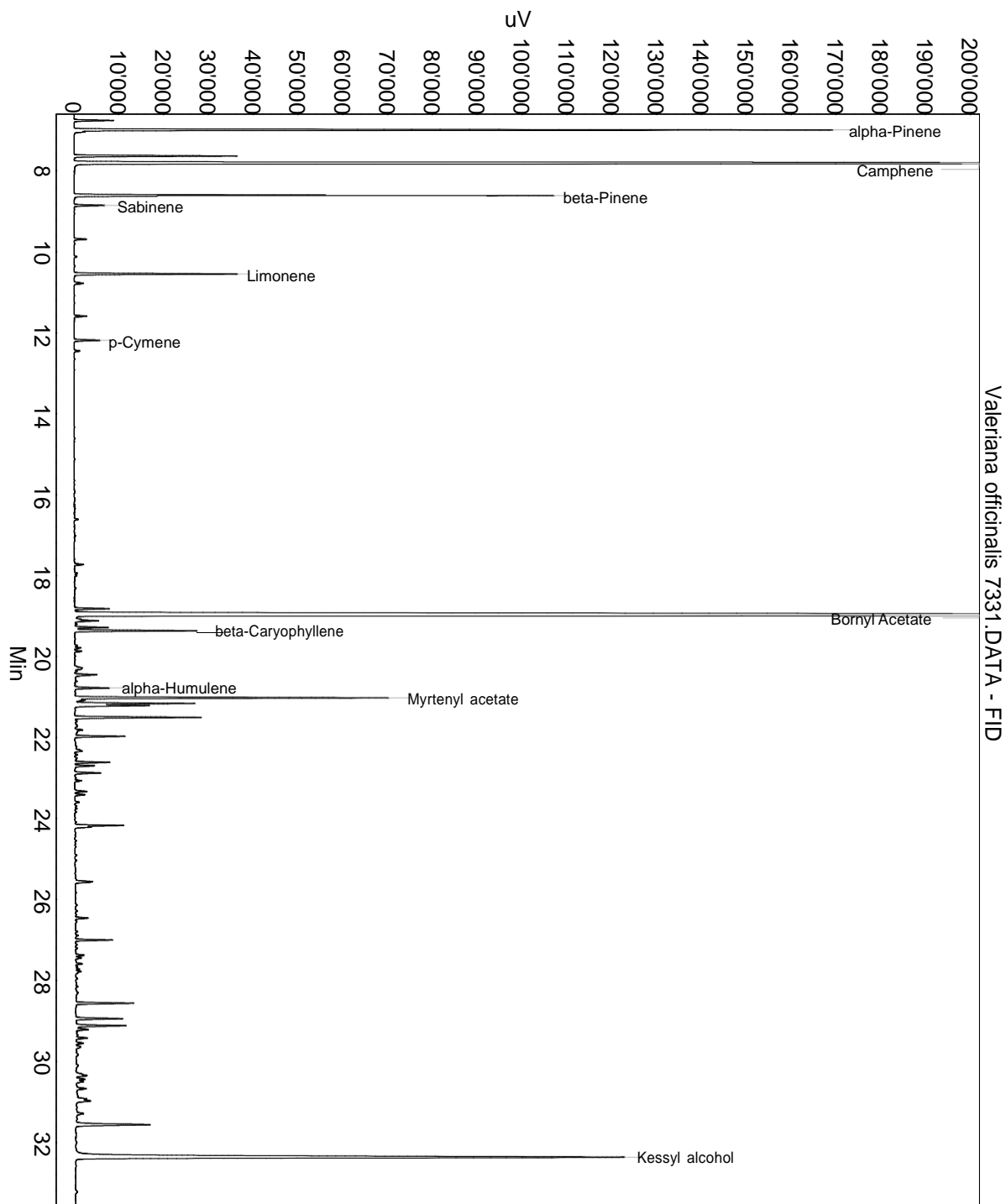
Lot: 7331

Date of analysis: 20.08.2020 16:16:48

System: GC-430 FID

Column: BGB Wax 60m / 0.25mm / 0.25um

Method: 180306 essential basis 60min



This data sheet was issued to the best of our knowledge and is supplied without warranty for its correctness or accuracy.

Certificate of Analysis

Product: **Valeriana officinalis 7331**

Lot: 7331

Date of analysis: 20.08.2020 16:16:48

System: GC-430 FID

Column: BGB Wax 60m / 0.25mm / 0.25um

Method: 180306 essential basis 60min

Index	Name	Time [Min]	Area [uV.Min]	Area % [%]	Allergene
1		6.76	249.6	0.326	
2	alpha-Pinene	6.99	4661.9	6.084	
3		7.64	1089.1	1.421	
4	Camphene	7.82	17145.8	22.377	
5	beta-Pinene	8.61	3221.5	4.204	
6	Sabinene	8.86	201.9	0.263	
7		9.69	79.2	0.103	
8	Limonene	10.55	1100.1	1.436	Directive 2003/15EC (7th)
9		10.78	78.1	0.102	
10		11.59	88.1	0.115	
11	p-Cymene	12.19	180.6	0.236	
12		12.45	40.0	0.052	
13		16.61	29.4	0.038	
14		17.73	70.5	0.092	
15		18.82	233.3	0.305	
16	Bornyl Acetate	18.98	28718.6	37.481	
17		19.11	247.6	0.323	
18		19.28	236.8	0.309	
19	beta-Caryophyllene	19.36	874.3	1.141	
20		19.78	39.4	0.051	
21		19.87	48.5	0.063	
22		20.28	55.0	0.072	
23		20.30	40.8	0.053	
24		20.45	185.3	0.242	
25	alpha-Humulene	20.77	258.4	0.337	
26	Myrtenyl acetate	21.02	2193.5	2.863	
27		21.07	83.1	0.108	
28		21.16	831.5	1.085	
29		21.21	586.7	0.766	
30		21.50	930.8	1.215	
31		21.60	16.2	0.021	
32		21.81	95.3	0.124	
33		21.97	354.8	0.463	
34		22.33	73.4	0.096	
35		22.61	245.5	0.320	
36		22.70	144.5	0.189	
37		22.87	197.0	0.257	
38		23.07	47.6	0.062	

This data sheet was issued to the best of our knowledge and is supplied without warranty for its correctness or accuracy.

Certificate of Analysis

Product: **Valeriana officinalis 7331**

Lot: 7331

Date of analysis: 20.08.2020 16:16:48

System: GC-430 FID

Column: BGB Wax 60m / 0.25mm / 0.25um

Method: 180306 essential basis 60min

Index	Name	Time [Min]	Area [uV.Min]	Area % [%]	Allergene
39		23.33	92.3	0.121	
40		23.41	74.6	0.097	
41		23.60	31.9	0.042	
42		24.17	341.0	0.445	
43		24.21	96.3	0.126	
44		25.56	176.9	0.231	
45		26.46	91.9	0.120	
46		27.00	240.4	0.314	
47		27.38	64.8	0.085	
48		27.44	47.3	0.062	
49		27.59	52.8	0.069	
50		27.72	26.0	0.034	
51		27.78	53.9	0.070	
52		28.56	442.7	0.578	
53		28.94	369.5	0.482	
54		29.12	404.8	0.528	
55		29.21	98.9	0.129	
56		29.42	88.0	0.115	
57		29.55	63.1	0.082	
58		29.64	57.5	0.075	
59		30.35	153.4	0.200	
60		30.44	77.2	0.101	
61		30.49	71.5	0.093	
62		30.67	96.7	0.126	
63		30.92	80.0	0.104	
64		30.97	133.9	0.175	
65		31.29	69.1	0.090	
66		31.56	752.9	0.983	
67	Kessyl alcohol	32.36	6816.0	8.896	
68		35.69	271.9	0.355	
69		47.59	210.5	0.275	
Total			76621.9	100.000	

This data sheet was issued to the best of our knowledge and is supplied without warranty for its correctness or accuracy.