

Certificate of Analysis

Product: Abies sibirica 1860

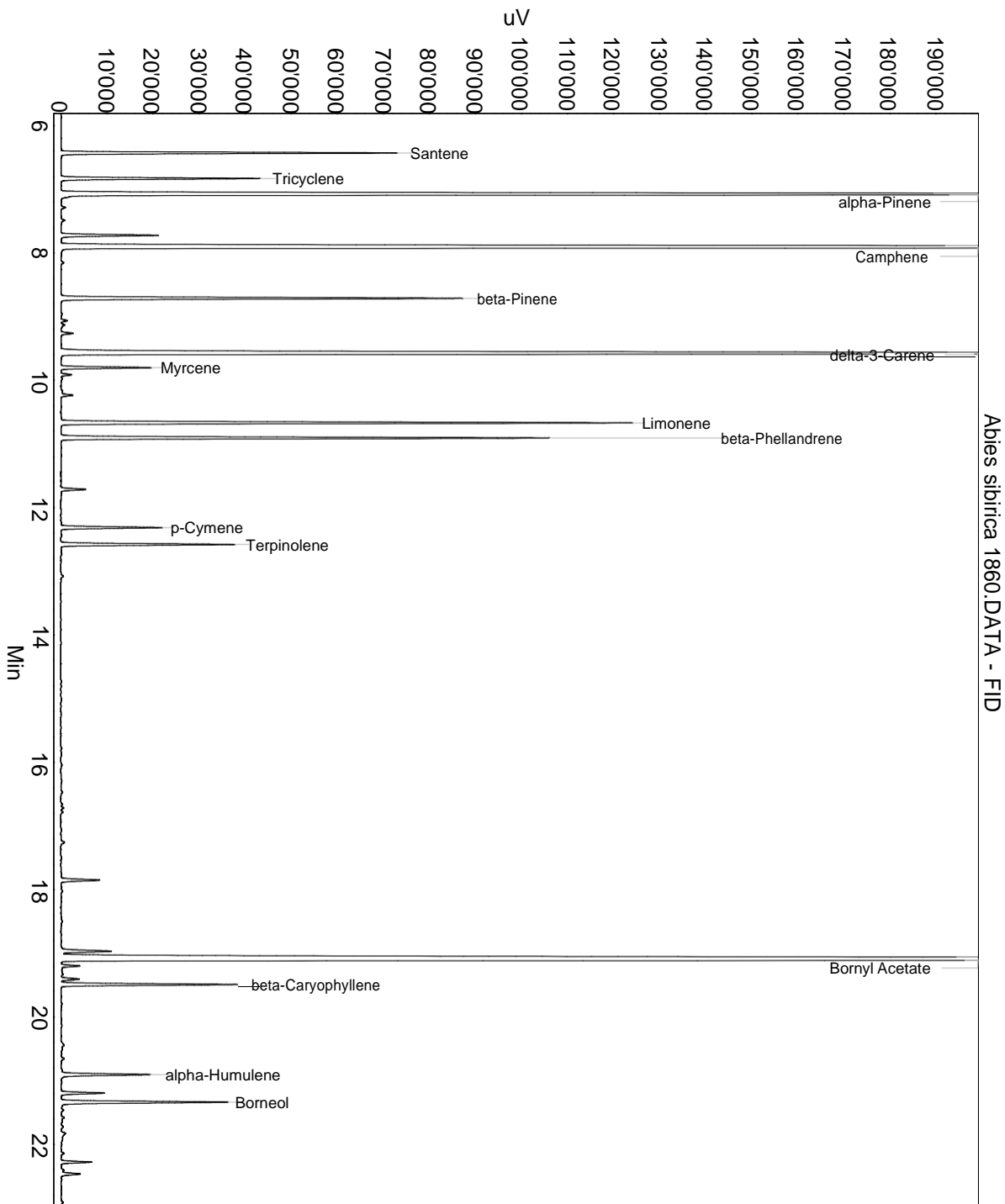
Lot: 1860

Date of analysis: 08.06.2017 18:03:25

System: GC-430 FID

Column: BGB Wax 60m / 0.25mm / 0.25um

Method: 170627 abies sibirica



This data sheet was issued to the best of our knowledge and is supplied without warranty for its correctness or accuracy.

Certificate of Analysis

Product: Abies sibirica 1860

Lot: 1860

Date of analysis: 08.06.2017 18:03:25

System: GC-430 FID

Column: BGB Wax 60m / 0.25mm / 0.25um

Method: 170627 abies sibirica

Index	Name	Time [Min]	Area [uV.Min]	Area % [%]	Allergene
1	Santene	6.43	1968.7	2.209	
2	Tricyclene	6.83	1248.5	1.401	
3	alpha-Pinene	7.08	13552.1	15.207	
4		7.72	642.7	0.721	
5	Camphene	7.91	18481.6	20.739	
6	beta-Pinene	8.71	2653.2	2.977	
7	delta-3-Carene	9.58	12300.3	13.803	
8	Myrcene	9.80	553.6	0.621	
9	Limonene	10.67	3809.4	4.275	Directive 2003/15EC (7th)
10	beta-Phellandrene	10.91	3243.7	3.640	
11		11.71	165.9	0.186	
12	p-Cymene	12.31	672.0	0.754	
13	Terpinolene	12.58	1146.4	1.286	
14		17.85	280.2	0.314	
15		18.96	379.0	0.425	
16	Bornyl Acetate	19.10	24435.5	27.420	
17		19.20	114.3	0.128	
18	beta-Caryophyllene	19.49	1164.4	1.307	
19	alpha-Humulene	20.90	623.9	0.700	
20		21.19	291.5	0.327	
21	Borneol	21.34	1192.1	1.338	
22		22.28	196.4	0.220	
Total			89115.4	100.000	

This data sheet was issued to the best of our knowledge and is supplied without warranty for its correctness or accuracy.