

Certificate of Analysis

Product: **Artemisa absinthium 1952**

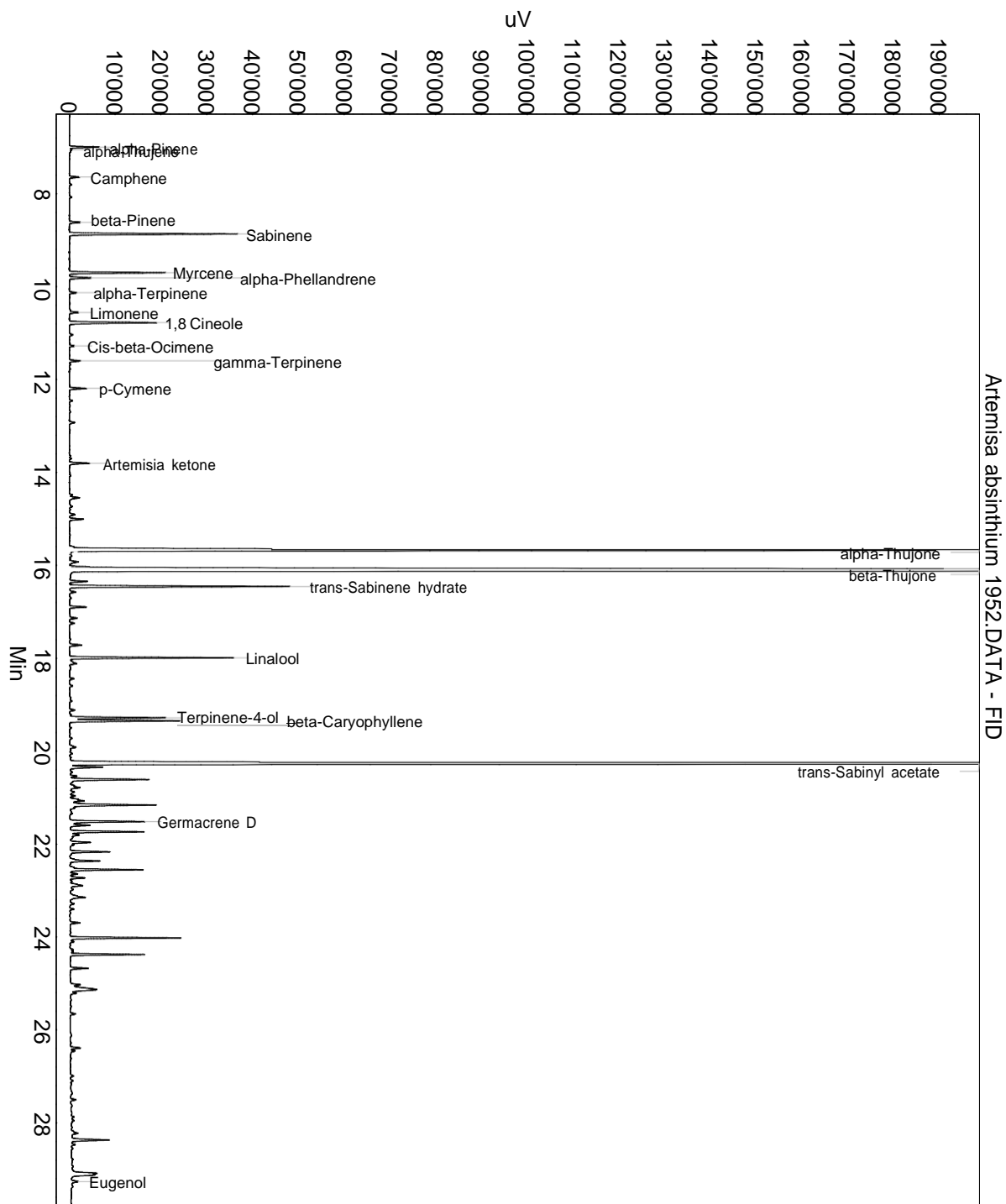
Lot: 1952

Date of analysis: 23.09.2020 16:23:45

System: GC-430 FID

Column: BGB Wax 60m / 0.25mm / 0.25um

Method: 180306 essential basis 60min



This data sheet was issued to the best of our knowledge and is supplied without warranty for its correctness or accuracy.

Certificate of Analysis

Product: **Artemisa absinthium 1952**

Lot: 1952

Date of analysis: 23.09.2020 16:23:45

System: GC-430 FID

Column: BGB Wax 60m / 0.25mm / 0.25um

Method: 180306 essential basis 60min

Index	Name	Time [Min]	Area [uV.Min]	Area % [%]	Allergene
1	alpha-Pinene	7.00	176.3	0.278	
2	alpha-Thujene	7.05	18.4	0.029	
3	Camphene	7.64	66.9	0.105	
4	beta-Pinene	8.62	75.1	0.118	
5	Sabinene	8.87	1085.8	1.709	
6	Myrcene	9.70	602.1	0.948	
7	alpha-Phellandrene	9.81	153.7	0.242	
8	alpha-Terpinene	10.13	51.7	0.081	
9	Limonene	10.56	65.9	0.104	Directive 2003/15EC (7th)
10	1,8 Cineole	10.78	633.5	0.997	
11		11.04	28.8	0.045	
12	Cis-beta-Ocimene	11.28	31.0	0.049	
13	gamma-Terpinene	11.60	77.7	0.122	
14	p-Cymene	12.19	117.7	0.185	
15		12.93	43.4	0.068	
16	Artemisia ketone	13.80	145.9	0.230	
17		14.55	77.4	0.122	
18		14.91	49.5	0.078	
19		15.01	104.2	0.164	
20	alpha-Thujone	15.67	9034.1	14.220	
21		15.94	66.9	0.105	
22	beta-Thujone	16.11	24617.4	38.750	
23		16.35	118.4	0.186	
24	trans-Sabinene hydrate	16.45	1425.7	2.244	
25		16.57	46.7	0.073	
26		16.90	110.7	0.174	
27		17.14	49.2	0.077	
28		17.25	36.9	0.058	
29		17.72	95.0	0.150	
30	Linalool	17.99	1049.9	1.653	Directive 2003/15EC (7th)
31		18.09	28.5	0.045	
32		18.11	51.1	0.080	
33		18.44	31.1	0.049	
34		19.11	39.1	0.062	
35	Terpinene-4-ol	19.28	638.1	1.004	
36	beta-Caryophyllene	19.35	759.9	1.196	
37		19.92	67.7	0.107	
38	trans-Sabinyll acetate	20.27	13170.0	20.731	

This data sheet was issued to the best of our knowledge and is supplied
without warranty for its correctness or accuracy.

Certificate of Analysis

Product: **Artemisa absinthium 1952**

Lot: 1952

Date of analysis: 23.09.2020 16:23:45

System: GC-430 FID

Column: BGB Wax 60m / 0.25mm / 0.25um

Method: 180306 essential basis 60min

Index	Name	Time [Min]	Area [uV.Min]	Area % [%]	Allergene
39		20.34	266.1	0.419	
40		20.54	46.1	0.073	
41		20.61	589.7	0.928	
42		20.74	31.8	0.050	
43		20.78	83.1	0.131	
44		20.88	30.5	0.048	
45		20.96	38.0	0.060	
46		21.04	50.1	0.079	
47		21.07	107.7	0.170	
48		21.16	710.1	1.118	
49	Germacrene D	21.52	543.4	0.855	
50		21.60	145.3	0.229	
51		21.74	502.4	0.791	
52		21.80	54.7	0.086	
53		21.96	129.1	0.203	
54		22.02	19.6	0.031	
55		22.17	277.1	0.436	
56		22.36	228.0	0.359	
57		22.55	515.6	0.812	
58		22.64	56.2	0.088	
59		22.73	108.6	0.171	
60		22.80	17.9	0.028	
61		22.89	172.0	0.271	
62		23.12	50.3	0.079	
63		23.15	127.8	0.201	
64		23.40	26.4	0.042	
65		23.70	71.5	0.113	
66		24.02	717.9	1.130	
67		24.10	27.4	0.043	
68		24.38	456.6	0.719	
69		24.67	124.9	0.197	
70		25.03	77.1	0.121	
71		25.13	389.5	0.613	
72		25.21	42.8	0.067	
73		25.66	41.6	0.066	
74		26.39	76.5	0.120	
75		26.45	38.6	0.061	
76		27.50	36.8	0.058	

This data sheet was issued to the best of our knowledge and is supplied without warranty for its correctness or accuracy.

Certificate of Analysis

Product: **Artemisa absinthium 1952**

Lot: 1952

Date of analysis: 23.09.2020 16:23:45

System: GC-430 FID

Column: BGB Wax 60m / 0.25mm / 0.25um

Method: 180306 essential basis 60min

Index	Name	Time [Min]	Area [uV.Min]	Area % [%]	Allergene
77		28.22	63.5	0.100	
78		28.37	301.4	0.474	
79		28.47	25.8	0.041	
80		29.09	162.6	0.256	
81		29.12	129.9	0.205	
82	Eugenol	29.26	54.9	0.086	Directive 2003/15EC (7th)
83		30.05	109.9	0.173	
84		30.61	49.0	0.077	
85		30.85	87.7	0.138	
86		30.91	240.1	0.378	
87	Chamazulene	34.58	234.1	0.369	
Total			63529.5	100.000	

This data sheet was issued to the best of our knowledge and is supplied without warranty for its correctness or accuracy.