

Certificate of Analysis

Product: **Boswellia serrata 5042**

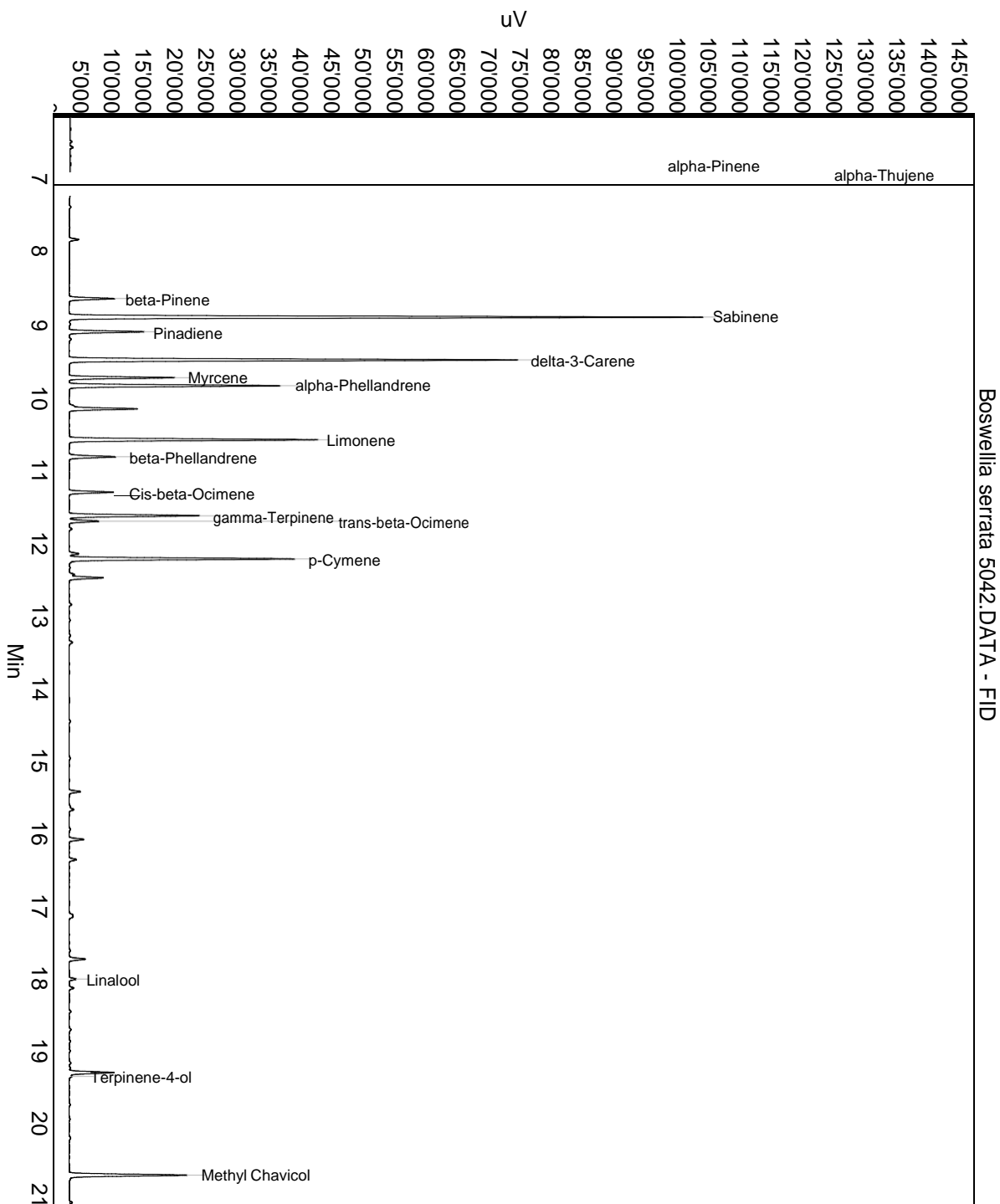
Lot: 5042

Date of analysis: 09.08.2019 13:26:18

System: GC-430 FID

Column: BGB Wax 60m / 0.25mm / 0.25um

Method: 180306 essential basis 60min



Boswellia serrata 5042.DAT - FID

This data sheet was issued to the best of our knowledge and is supplied without warranty for its correctness or accuracy.

Certificate of Analysis

Product: **Boswellia serrata 5042**

Lot: 5042

Date of analysis: 09.08.2019 13:26:18

System: GC-430 FID

Column: BGB Wax 60m / 0.25mm / 0.25um

Method: 180306 essential basis 60min

Index	Name	Time [Min]	Area [uV.Min]	Area % [%]	Allergene
1	alpha-Pinene	7.04	3344.1	5.156	
2	alpha-Thujene	7.13	48853.0	75.323	
3		7.84	46.6	0.072	
4	beta-Pinene	8.66	227.9	0.351	
5	Sabinene	8.91	3032.5	4.676	
6	Pinadiene	9.12	355.9	0.549	
7	delta-3-Carene	9.51	2167.8	3.342	
8	Myrcene	9.75	482.3	0.744	
9	alpha-Phellandrene	9.86	1018.9	1.571	
10		10.18	356.2	0.549	
11	Limonene	10.61	1213.4	1.871	Directive 2003/15EC (7th)
12	beta-Phellandrene	10.84	242.0	0.373	
13	Cis-beta-Ocimene	11.33	209.4	0.323	
14	gamma-Terpinene	11.65	639.4	0.986	
15	trans-beta-Ocimene	11.73	143.5	0.221	
16		12.18	48.1	0.074	
17	p-Cymene	12.25	1127.1	1.738	
18		12.51	198.0	0.305	
19		15.46	60.1	0.093	
20		16.11	77.2	0.119	
21		16.39	39.2	0.060	
22		17.76	86.1	0.133	
23	Linalool	18.04	32.9	0.051	Directive 2003/15EC (7th)
24		19.33	224.1	0.346	
25	Terpinene-4-ol	19.38	12.1	0.019	
26	Methyl Chavicol	20.74	609.1	0.939	
27	Methyleugenol	26.71	11.1	0.017	
Total			64858.2	100.000	

This data sheet was issued to the best of our knowledge and is supplied without warranty for its correctness or accuracy.