

Certificate of Analysis

Product: **Citrus reticulata 8242**

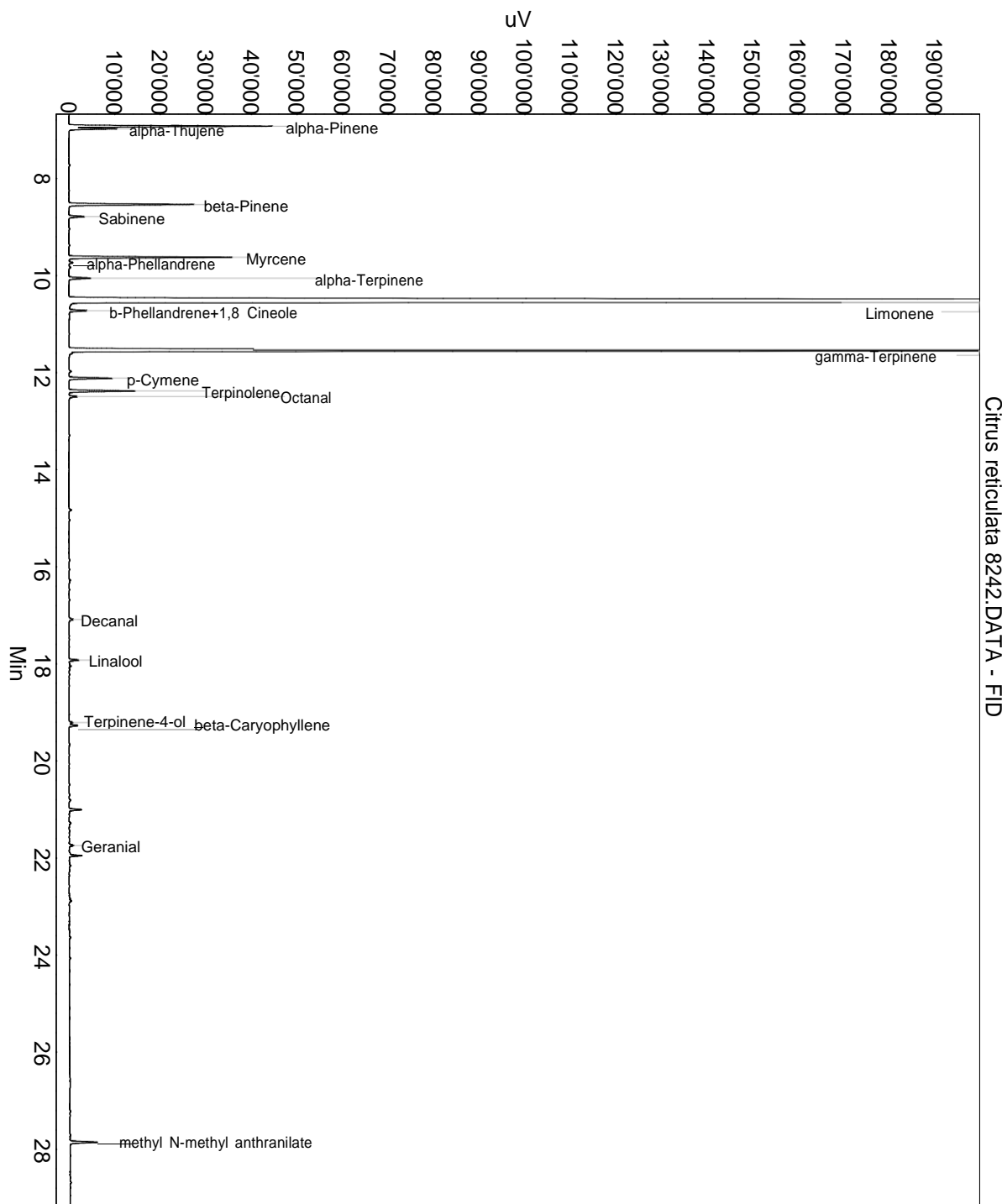
Lot: 8242

Date of analysis: 25.02.2021 00:39:42

System: GC-430 FID

Column: BGB Wax 60m / 0.25mm / 0.25um

Method: 180306 essential basis 60min



Citrus reticulata 8242.DATA - FID

This data sheet was issued to the best of our knowledge and is supplied without warranty for its correctness or accuracy.

Certificate of Analysis

Product: **Citrus reticulata 8242**

Lot: 8242

Date of analysis: 25.02.2021 00:39:42

System: GC-430 FID

Column: BGB Wax 60m / 0.25mm / 0.25um

Method: 180306 essential basis 60min

Index	Name	Time [Min]	Area [uV.Min]	Area % [%]	Allergene
1	alpha-Pinene	6.92	1219.8	2.088	
2	alpha-Thujene	6.98	287.6	0.492	
3	beta-Pinene	8.54	826.5	1.414	
4	Sabinene	8.79	104.4	0.179	
5	Myrcene	9.62	1028.9	1.761	
6	alpha-Phellandrene	9.73	27.0	0.046	
7	alpha-Terpinene	10.05	149.7	0.256	
8	Limonene	10.54	42663.2	73.014	Directive 2003/15EC (7th)
9	b-Phellandrene+1,8 Cineole	10.72	120.9	0.207	
10	gamma-Terpinene	11.55	10407.5	17.811	
11		11.58	20.2	0.035	
12	p-Cymene	12.12	289.7	0.496	
13	Terpinolene	12.38	437.8	0.749	
14	Octanal	12.49	58.1	0.100	
15	Decanal	17.08	35.3	0.060	
16	Linalool	17.92	63.1	0.108	Directive 2003/15EC (7th)
17	Terpinene-4-ol	19.21	29.1	0.050	
18	beta-Caryophyllene	19.27	61.9	0.106	
19		21.00	87.3	0.149	
20	Geranial	21.74	37.0	0.063	(= Citral) Directive 2003/15EC (7th)
21		21.95	91.6	0.157	
22	methyl N-methyl anthranilate	27.85	205.2	0.351	
23	alpha-Sinensal	32.50	179.5	0.307	
Total			58431.6	100.000	

This data sheet was issued to the best of our knowledge and is supplied without warranty for its correctness or accuracy.