

Certificate of Analysis

Product: **Commiphora myrrha organic 8231**

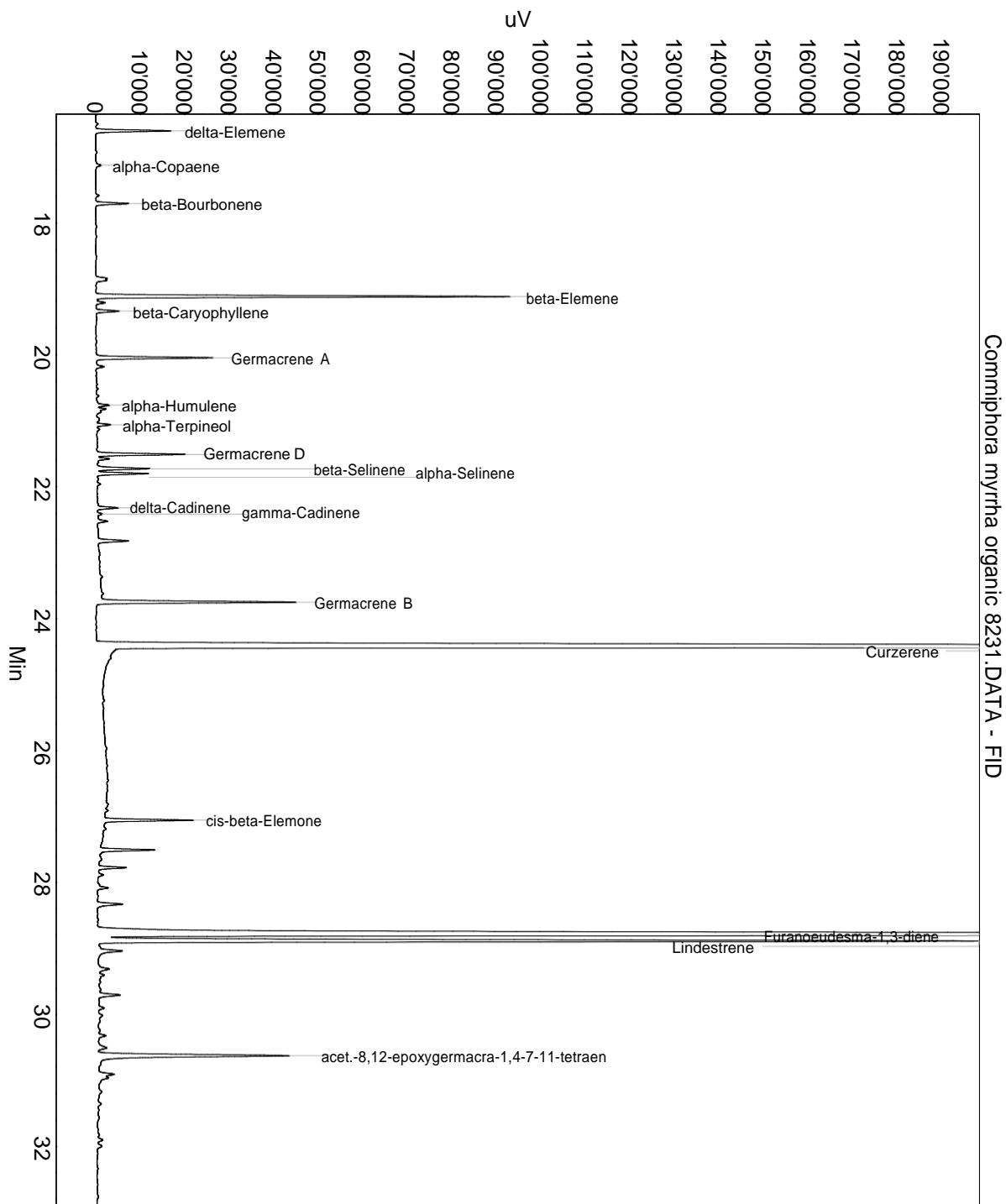
Lot: 8231

Date of analysis: 10.02.2021 17:15:45

System: GC-430 FID

Column: BGB Wax 60m / 0.25mm / 0.25um

Method: 210210 Commiphora myrrha



This data sheet was issued to the best of our knowledge and is supplied without warranty for its correctness or accuracy.

Certificate of Analysis

Product: **Commiphora myrrha organic 8231**

Lot: 8231

Date of analysis: 10.02.2021 17:15:45

System: GC-430 FID

Column: BGB Wax 60m / 0.25mm / 0.25um

Method: 210210 Commiphora myrrha

Index	Name	Time [Min]	Area [uV.Min]	Area % [%]	Allergene
1	delta-Elemene	16.61	498.0	0.720	
2	alpha-Copaene	17.13	49.3	0.071	
3		17.59	23.2	0.034	
4	beta-Bourbonene	17.71	235.8	0.341	
5		18.84	77.8	0.112	
6		18.87	80.9	0.117	
7	beta-Elemene	19.12	2923.8	4.225	
8		19.21	71.0	0.103	
9	beta-Caryophyllene	19.34	166.8	0.241	
10	Germacrene A	20.05	822.6	1.189	
11		20.18	68.0	0.098	
12		20.62	18.4	0.027	
13	alpha-Humulene	20.76	81.5	0.118	
14		20.82	49.6	0.072	
15	alpha-Terpineol	21.06	99.9	0.144	
16		21.13	24.2	0.035	
17	Germacrene D	21.51	644.7	0.932	
18		21.58	102.3	0.148	
19	beta-Selinene	21.73	407.5	0.589	
20	alpha-Selinene	21.80	362.1	0.523	
21	delta-Cadinene	22.32	151.1	0.218	
22	gamma-Cadinene	22.41	35.7	0.052	
23		22.52	85.0	0.123	
24		22.82	242.6	0.351	
25	Germacrene B	23.75	1492.2	2.156	
26	Curzerene	24.43	25092.6	36.258	
27		26.81	26.9	0.039	
28	cis-beta-Elemone	27.06	626.6	0.905	
29		27.51	412.8	0.597	
30		27.77	199.9	0.289	
31		27.89	45.3	0.065	
32		28.08	88.0	0.127	
33		28.33	224.8	0.325	
34	Furanoedesma-1,3-diene	28.79	21893.5	31.636	
35	Lindestrene	28.89	7046.5	10.182	
36		29.04	279.3	0.404	
37		29.31	112.5	0.163	
38		29.40	52.0	0.075	

This data sheet was issued to the best of our knowledge and is supplied without warranty for its correctness or accuracy.

Certificate of Analysis

Product: **Commiphora myrrha organic 8231**

Lot: 8231

Date of analysis: 10.02.2021 17:15:45

System: GC-430 FID

Column: BGB Wax 60m / 0.25mm / 0.25um

Method: 210210 Commiphora myrrha

Index	Name	Time [Min]	Area [uV.Min]	Area % [%]	Allergene
39		29.71	188.4	0.272	
40		29.90	57.5	0.083	
41		30.02	42.1	0.061	
42		30.32	66.4	0.096	
43		30.51	95.5	0.138	
44	acet.-8,12-epoxygermacra-1,4-7-11-tetraen	30.62	1944.4	2.810	
45		30.91	140.5	0.203	
46		30.96	93.1	0.135	
47		31.00	14.1	0.020	
48		31.36	28.5	0.041	
49		31.90	43.5	0.063	
50		31.99	47.0	0.068	
51		33.48	58.3	0.084	
52		33.70	41.7	0.060	
53		34.65	47.7	0.069	
54		35.20	91.2	0.132	
55		35.57	151.7	0.219	
56		36.12	193.6	0.280	
57		39.26	764.5	1.105	
58		50.20	180.4	0.261	
Total			69205.2	100.000	

This data sheet was issued to the best of our knowledge and is supplied without warranty for its correctness or accuracy.