

Certificate of Analysis

Product: **Elettaria cardamomum organic 6881**

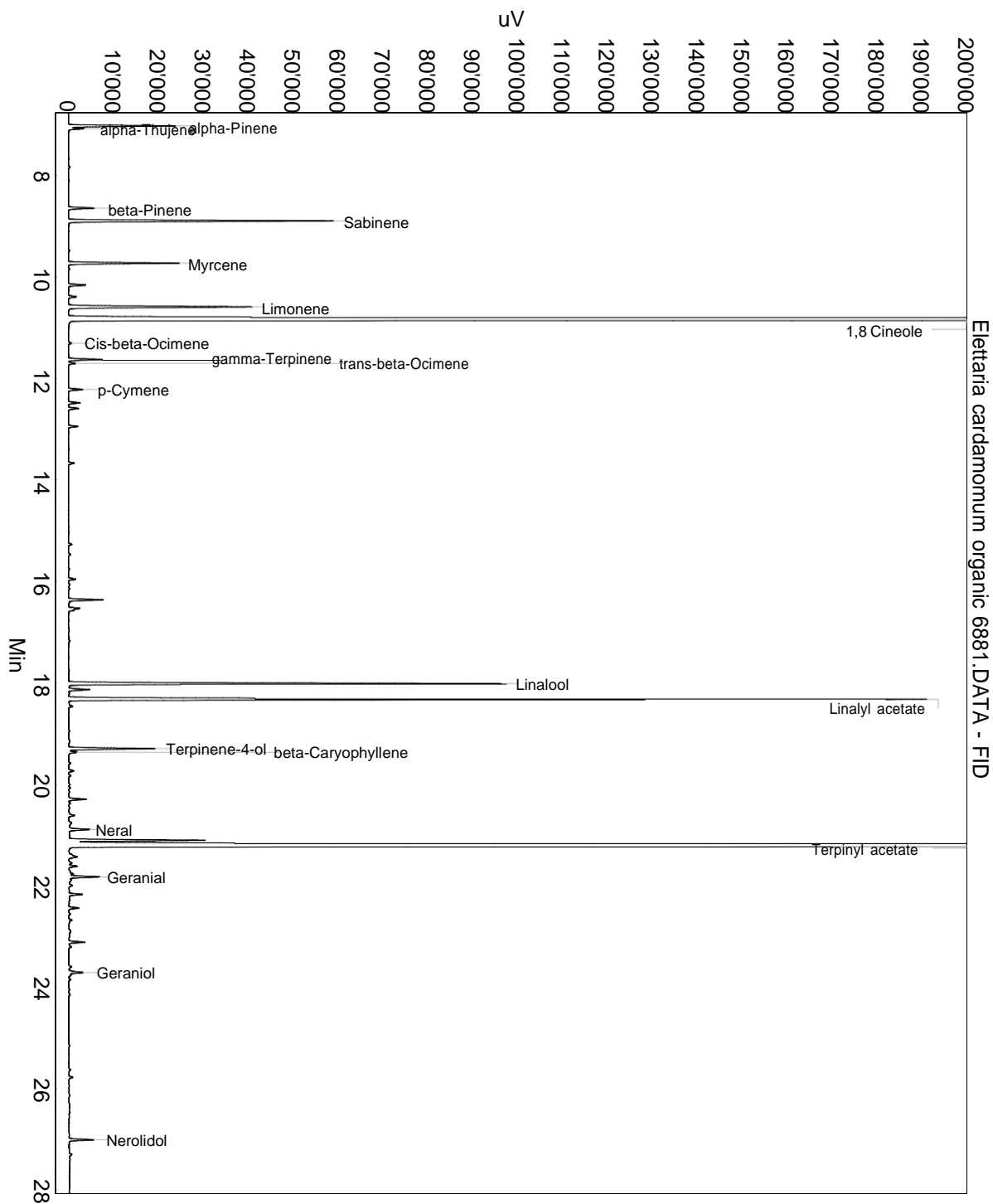
Lot: 6881

Date of analysis: 03.06.2020 19:45:57

System: GC-430 FID

Column: BGB Wax 60m / 0.25mm / 0.25um

Method: 180306 essential basis 60min



This data sheet was issued to the best of our knowledge and is supplied without warranty for its correctness or accuracy.

Certificate of Analysis

Product: **Elettaria cardamomum organic 6881**

Lot: 6881

Date of analysis: 03.06.2020 19:45:57

System: GC-430 FID

Column: BGB Wax 60m / 0.25mm / 0.25um

Method: 180306 essential basis 60min

Index	Name	Time [Min]	Area [uV.Min]	Area % [%]	Allergene
1	alpha-Pinene	7.02	669.1	1.055	
2	alpha-Thujene	7.07	100.0	0.158	
3	beta-Pinene	8.64	178.6	0.282	
4	Sabinene	8.89	1733.7	2.733	
5	Myrcene	9.73	710.5	1.120	
6		10.16	119.6	0.188	
7		10.39	55.7	0.088	
8	Limonene	10.59	1353.3	2.133	Directive 2003/15EC (7th)
9	1,8 Cineole	10.84	22401.1	35.310	
10	Cis-beta-Ocimene	11.30	22.6	0.036	
11	gamma-Terpinene	11.62	227.6	0.359	
12	trans-beta-Ocimene	11.70	49.6	0.078	
13	p-Cymene	12.22	101.1	0.159	
14		12.48	81.2	0.128	
15		12.59	71.0	0.112	
16		12.94	61.3	0.097	
17		13.67	42.3	0.067	
18		15.96	53.0	0.084	
19		16.36	244.3	0.385	
20		16.53	75.7	0.119	
21		16.57	33.1	0.052	
22	Linalool	18.02	2970.8	4.683	Directive 2003/15EC (7th)
23		18.13	163.0	0.257	
24	Linalyl acetate	18.33	5921.6	9.334	
25		18.46	35.5	0.056	
26	Terpinene-4-ol	19.30	603.7	0.952	
27	beta-Caryophyllene	19.37	64.0	0.101	
28		19.74	38.7	0.061	
29		20.30	122.3	0.193	
30		20.62	46.7	0.074	
31	Neral	20.89	149.1	0.235	(= Citral) Directive 2003/15EC (7th)
32		21.11	914.8	1.442	
33	Terpinyl acetate	21.22	23012.5	36.274	
34		21.43	84.2	0.133	
35		21.62	53.5	0.084	
36		21.77	23.0	0.036	
37	Geranial	21.83	219.5	0.346	(= Citral) Directive 2003/15EC (7th)
38		21.89	19.6	0.031	

This data sheet was issued to the best of our knowledge and is supplied without warranty for its correctness or accuracy.

Certificate of Analysis

Product: **Elettaria cardamomum organic 6881**

Lot: 6881

Date of analysis: 03.06.2020 19:45:57

System: GC-430 FID

Column: BGB Wax 60m / 0.25mm / 0.25um

Method: 180306 essential basis 60min

Index	Name	Time [Min]	Area [uV.Min]	Area % [%]	Allergene
39		22.17	95.1	0.150	
40		22.44	70.8	0.112	
41		23.11	107.2	0.169	
42		23.21	19.3	0.030	
43	Geraniol	23.71	131.9	0.208	Directive 2003/15EC (7th)
44	Nerolidol	27.01	163.5	0.258	
45		28.14	25.4	0.040	
Total			63440.4	100.000	

This data sheet was issued to the best of our knowledge and is supplied without warranty for its correctness or accuracy.