

# Certificate of Analysis

Product: **Eucalyptus citriodora organic 7481**

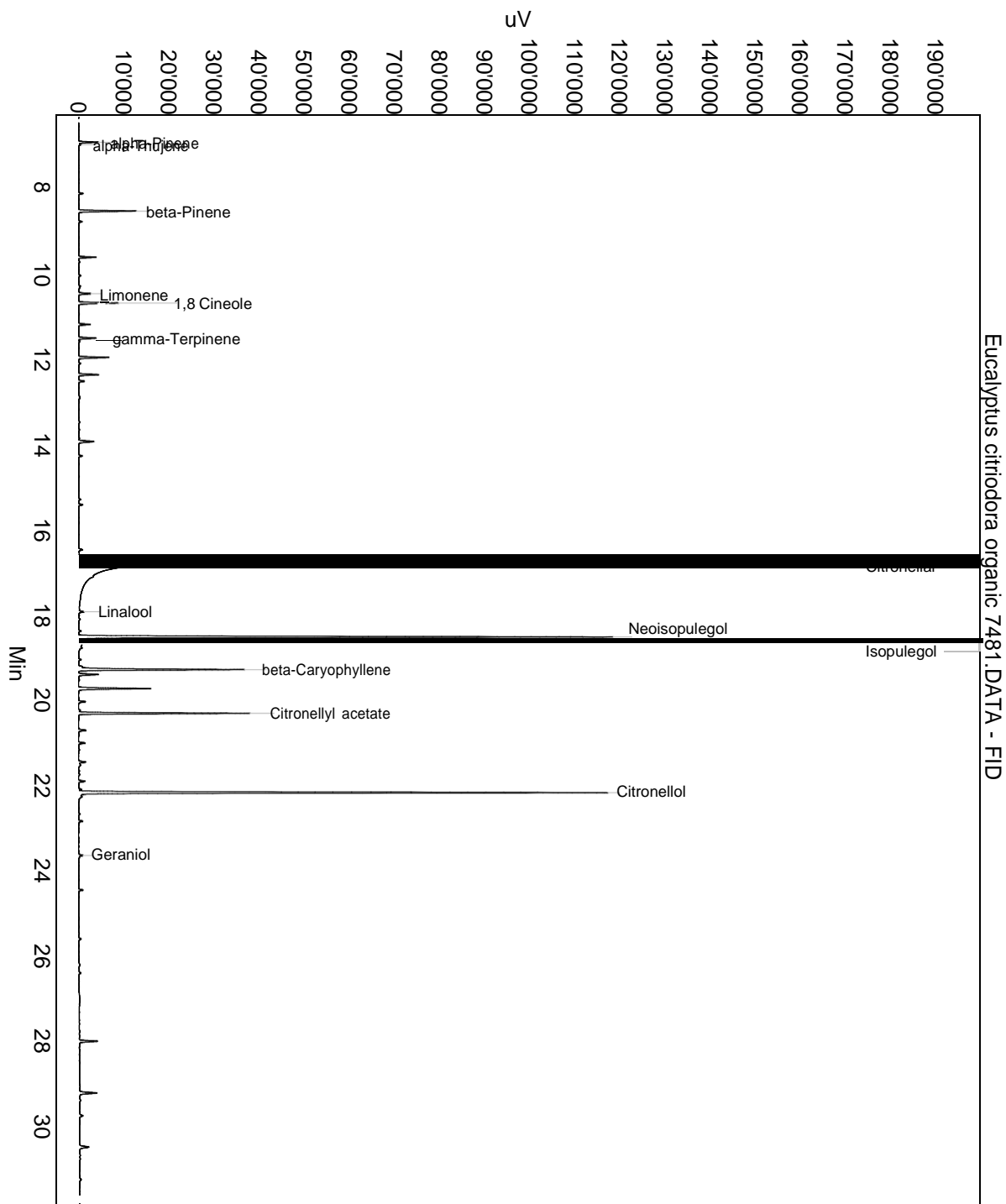
Lot: 7481

Date of analysis: 08.10.2020 14:21:29

System: GC-430 FID

Column: BGB Wax 60m / 0.25mm / 0.25um

Method: 180306 essential basis 60min



This data sheet was issued to the best of our knowledge and is supplied without warranty for its correctness or accuracy.

## Certificate of Analysis

Product: **Eucalyptus citriodora organic 7481**

Lot: 7481

Date of analysis: 08.10.2020 14:21:29

System: GC-430 FID

Column: BGB Wax 60m / 0.25mm / 0.25um

Method: 180306 essential basis 60min

Index	Name	Time [Min]	Area [uV.Min]	Area % [%]	Allergene
1	alpha-Pinene	6.95	122.5	0.188	
2	alpha-Thujene	7.01	18.3	0.028	
3		8.16	27.9	0.043	
4	beta-Pinene	8.57	386.2	0.593	
5		9.65	110.6	0.170	
6	Limonene	10.51	85.3	0.131	Directive 2003/15EC (7th)
7	1,8 Cineole	10.73	287.2	0.441	
8		11.23	76.1	0.117	
9	gamma-Terpinene	11.55	116.0	0.178	
10		12.00	206.0	0.316	
11		12.41	135.8	0.208	
12		12.56	42.7	0.066	
13		13.97	128.3	0.197	
14		15.46	28.7	0.044	
15	Citronellal	16.78	44720.1	68.650	
16	Linalool	17.95	30.2	0.046	Directive 2003/15EC (7th)
17	Neoisopulegol	18.54	3812.4	5.852	
18	Isopulegol	18.66	7514.1	11.535	
19		19.23	23.0	0.035	
20	beta-Caryophyllene	19.30	1205.4	1.850	
21		19.42	144.0	0.221	
22		19.75	521.8	0.801	
23		20.05	48.4	0.074	
24	Citronellyl acetate	20.33	1079.2	1.657	
25		20.72	54.0	0.083	
26		21.02	47.3	0.073	
27		21.47	51.8	0.080	
28		21.92	49.0	0.075	
29	Citronellol	22.18	3590.2	5.511	Directive 2003/15EC (7th)
30		22.85	30.6	0.047	
31	Geraniol	23.65	29.7	0.046	Directive 2003/15EC (7th)
32		24.46	30.5	0.047	
33		28.00	143.1	0.220	
34		29.22	156.1	0.240	
35		30.48	90.0	0.138	
Total			65142.4	100.000	

This data sheet was issued to the best of our knowledge and is supplied without warranty for its correctness or accuracy.