

Certificate of Analysis

Product: **Illicium verum organic 8151**

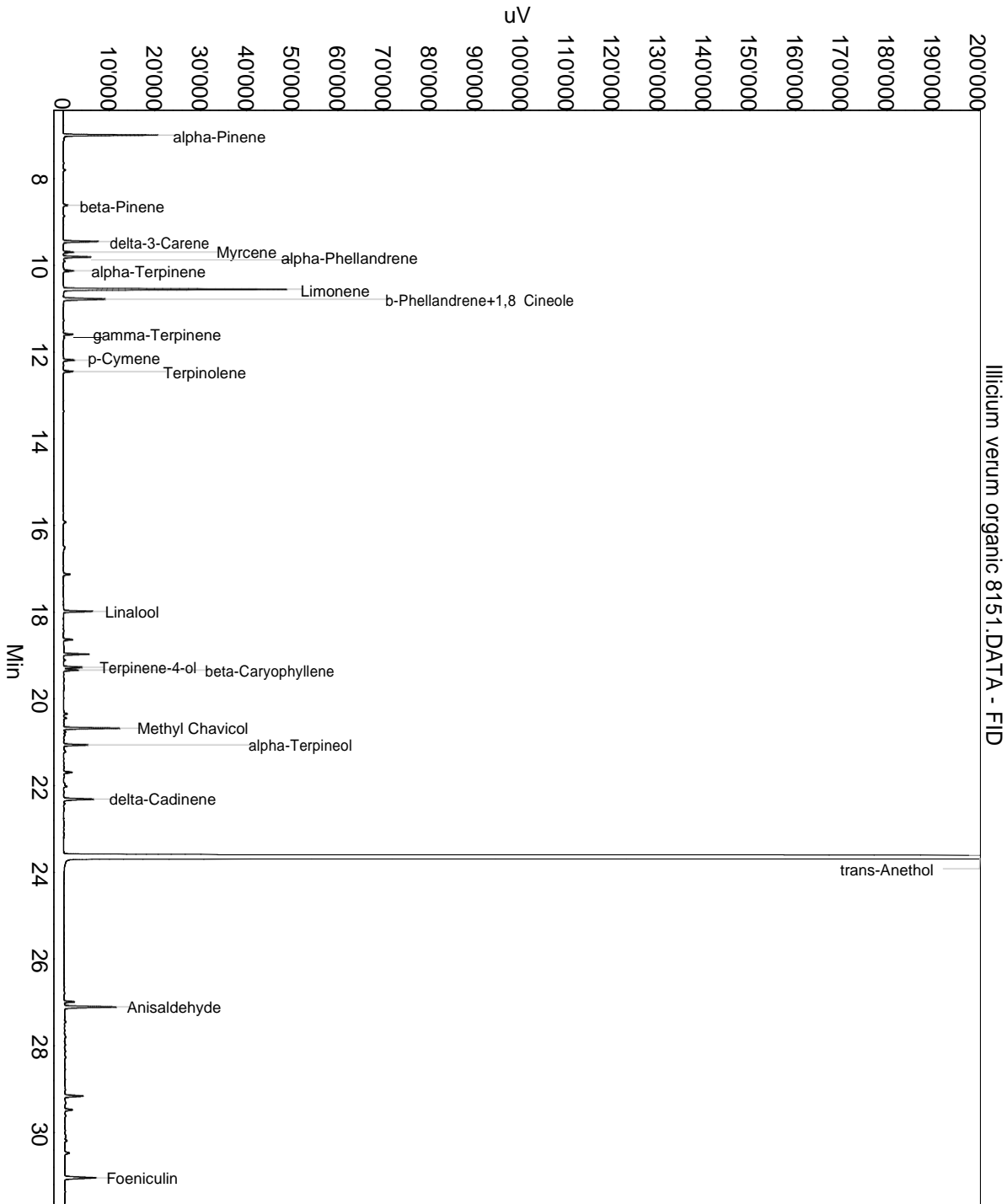
Lot: 8151

Date of analysis: 29.01.2021 17:41:27

System: GC-430 FID

Column: BGB Wax 60m / 0.25mm / 0.25um

Method: 180306 essential basis 60min



This data sheet was issued to the best of our knowledge and is supplied without warranty for its correctness or accuracy.

Certificate of Analysis

Product: Illicium verum organic 8151

Lot: 8151

Date of analysis: 29.01.2021 17:41:27

System: GC-430 FID

Column: BGB Wax 60m / 0.25mm / 0.25um

Method: 180306 essential basis 60min

Index	Name	Time [Min]	Area [uV.Min]	Area % [%]	Allergene
1	alpha-Pinene	7.00	582.1	0.789	
2	beta-Pinene	8.61	33.6	0.046	
3	delta-3-Carene	9.45	235.1	0.319	
4	Myrcene	9.70	68.8	0.093	
5	alpha-Phellandrene	9.81	180.4	0.244	
6	alpha-Terpinene	10.13	72.0	0.098	
7	Limonene	10.55	1476.6	2.001	Directive 2003/15EC (7th)
8	b-Phellandrene+1,8 Cineole	10.78	363.3	0.492	
9	gamma-Terpinene	11.59	63.2	0.086	
10	p-Cymene	12.19	78.0	0.106	
11	Terpinolene	12.45	68.8	0.093	
12		17.13	49.7	0.067	
13	Linalool	17.98	191.8	0.260	Directive 2003/15EC (7th)
14		18.63	62.8	0.085	
15		18.97	167.5	0.227	
16	Terpinene-4-ol	19.27	133.3	0.181	
17	beta-Caryophyllene	19.33	108.0	0.146	
18		20.35	25.5	0.035	
19	Methyl Chavicol	20.68	391.4	0.530	
20		20.76	15.5	0.021	
21	alpha-Terpineol	21.06	174.1	0.236	
22		21.69	65.0	0.088	
23	delta-Cadinene	22.31	233.6	0.316	
24	trans-Anethol	23.67	67937.1	92.051	
25		26.99	66.8	0.091	
26	Anisaldehyde	27.10	414.8	0.562	
27		29.16	151.8	0.206	
28		29.48	63.2	0.086	
29		30.47	42.8	0.058	
30	Foeniculin	31.04	287.0	0.389	
Total			73803.9	100.000	

This data sheet was issued to the best of our knowledge and is supplied
without warranty for its correctness or accuracy.