

Certificate of Analysis

Product: **Juniperus communis organic 5301**

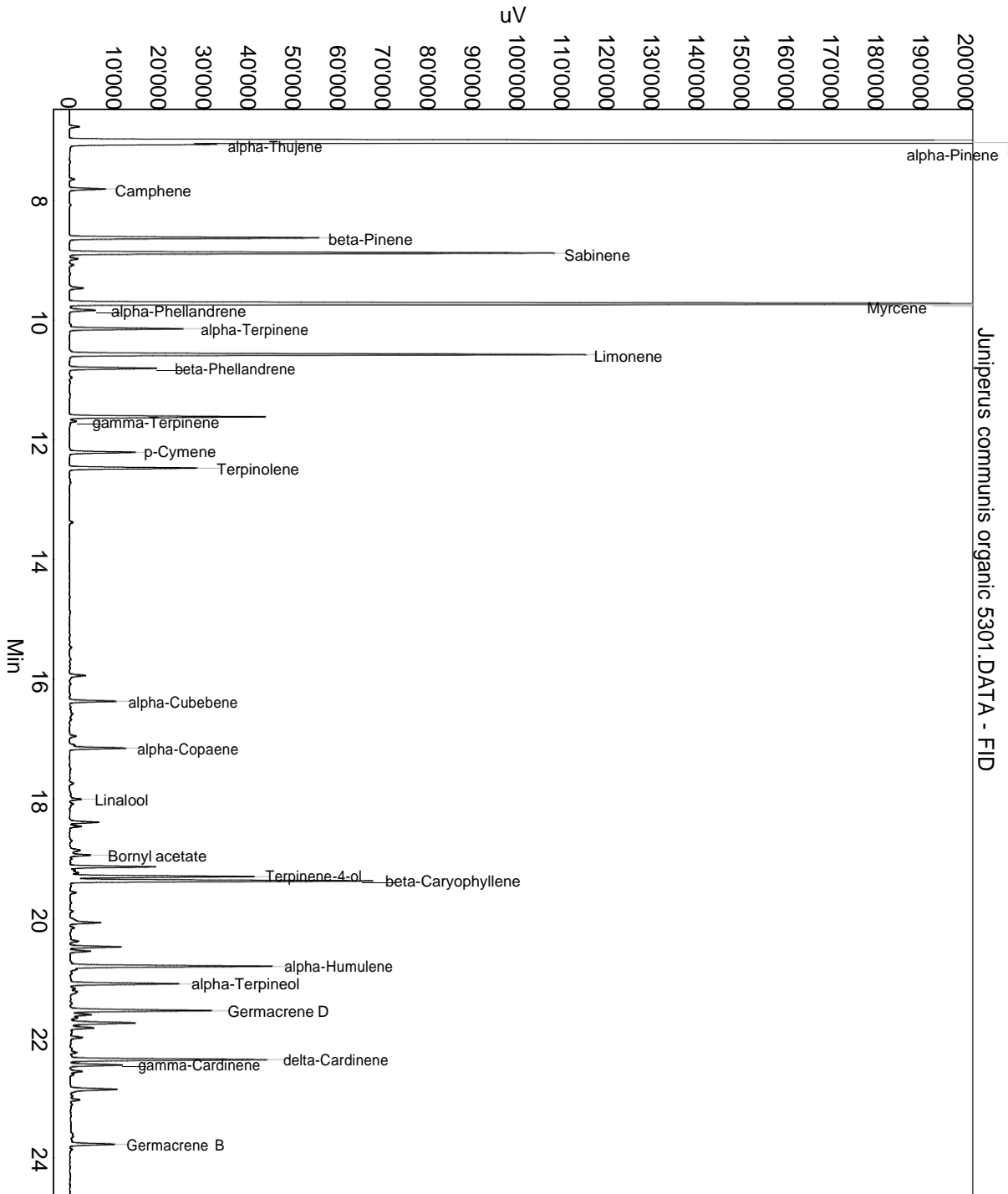
Lot: 5301

Date of analysis: 18.09.2019 18:44:34

System: GC-430 FID

Column: BGB Wax 60m / 0.25mm / 0.25um

Method: 180306 essential basis 60min



This data sheet was issued to the best of our knowledge and is supplied without warranty for its correctness or accuracy.

Certificate of Analysis

Product: **Juniperus communis organic 5301**

Lot: 5301

Date of analysis: 18.09.2019 18:44:34

System: GC-430 FID

Column: BGB Wax 60m / 0.25mm / 0.25um

Method: 180306 essential basis 60min

Index	Name	Time [Min]	Area [uV.Min]	Area % [%]	Allergene
1		6.77	64.4	0.096	
2	alpha-Pinene	7.03	29646.6	44.325	
3	alpha-Thujene	7.06	686.8	1.027	
4		7.65	33.0	0.049	
5	Camphene	7.81	240.8	0.360	
6	beta-Pinene	8.63	1673.2	2.502	
7	Sabinene	8.88	3167.4	4.736	
8		8.98	58.9	0.088	
9		9.08	28.6	0.043	
10		9.46	102.9	0.154	
11	Myrcene	9.73	9170.7	13.711	
12	alpha-Phellandrene	9.83	193.6	0.289	
13	alpha-Terpinene	10.14	762.7	1.140	
14	Limonene	10.58	3489.6	5.217	Directive 2003/15EC (7th)
15	beta-Phellandrene	10.81	584.9	0.874	
16		11.62	1303.5	1.949	
17	gamma-Terpinene	11.69	52.4	0.078	
18	p-Cymene	12.21	455.1	0.680	
19	Terpinolene	12.47	857.7	1.282	
20		13.38	27.0	0.040	
21		15.94	130.8	0.196	
22	alpha-Cubebene	16.37	320.8	0.480	
23		16.95	47.8	0.071	
24		17.10	35.4	0.053	
25	alpha-Copaene	17.15	397.1	0.594	
26		17.74	31.9	0.048	
27	Linalool	18.01	78.0	0.117	Directive 2003/15EC (7th)
28		18.09	34.7	0.052	
29		18.39	211.6	0.316	
30		18.46	82.9	0.124	
31		18.86	116.5	0.174	
32	Bornyl acetate	18.94	154.7	0.231	
33		19.14	557.4	0.833	
34	Terpinene-4-ol	19.30	1168.0	1.746	
35	beta-Caryophyllene	19.37	2115.8	3.163	
36		19.57	49.7	0.074	
37		19.88	28.3	0.042	
38		20.07	277.3	0.415	

This data sheet was issued to the best of our knowledge and is supplied without warranty for its correctness or accuracy.

Certificate of Analysis

Product: **Juniperus communis organic 5301**

Lot: 5301

Date of analysis: 18.09.2019 18:44:34

System: GC-430 FID

Column: BGB Wax 60m / 0.25mm / 0.25um

Method: 180306 essential basis 60min

Index	Name	Time [Min]	Area [uV.Min]	Area % [%]	Allergene
39		20.15	45.3	0.068	
40		20.38	59.4	0.089	
41		20.47	334.3	0.500	
42		20.55	144.4	0.216	
43	alpha-Humulene	20.80	1538.3	2.300	
44	alpha-Terpineol	21.09	785.0	1.174	
45		21.17	37.7	0.056	
46		21.22	80.8	0.121	
47	Germacrene D	21.54	1062.9	1.589	
48		21.61	166.3	0.249	
49		21.66	55.3	0.083	
50		21.74	547.4	0.818	
51		21.83	206.1	0.308	
52		21.99	96.0	0.144	
53		22.24	40.3	0.060	
54	delta-Cardinene	22.36	1384.4	2.070	
55	gamma-Cardinene	22.45	367.1	0.549	
56		22.55	87.8	0.131	
57		22.61	24.5	0.037	
58		22.85	425.9	0.637	
59		23.03	68.4	0.102	
60		23.11	17.4	0.026	
61	Germacrene B	23.77	335.0	0.501	
62		25.27	31.3	0.047	
63		26.47	73.4	0.110	
64		27.02	31.9	0.048	
65		27.40	58.8	0.088	
66		27.68	48.8	0.073	
67		29.37	38.8	0.058	
68		29.66	41.4	0.062	
69		29.92	101.3	0.151	
70		30.52	52.8	0.079	
71		30.59	16.8	0.025	
72		30.87	40.1	0.060	
Total			66884.5	100.000	

This data sheet was issued to the best of our knowledge and is supplied without warranty for its correctness or accuracy.