

# Certificate of Analysis

Product: **Lavandula angustifolia AOP organic 5951**

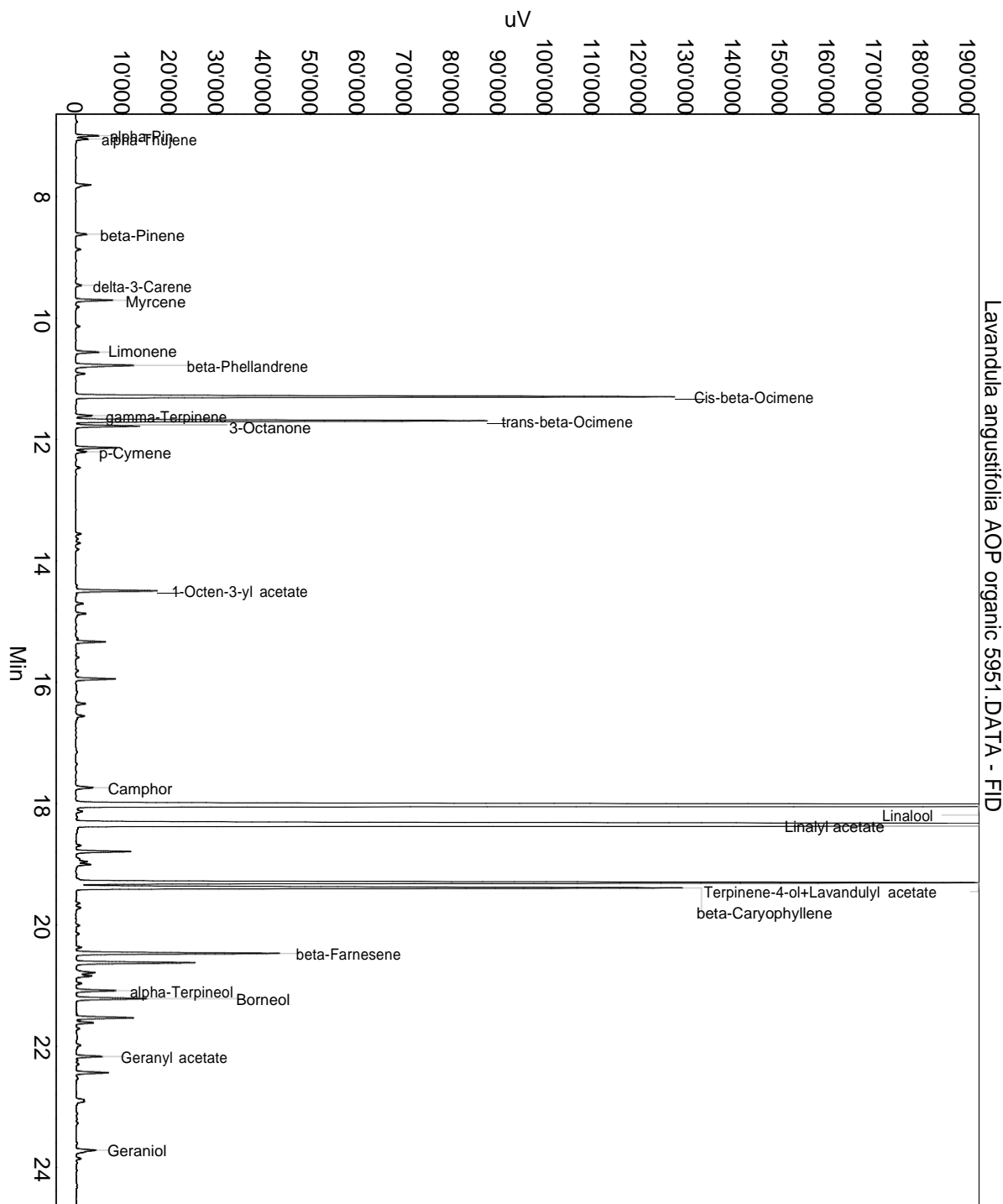
Lot: 5951

Date of analysis: 18.12.2019 16:23:32

System: GC-430 FID

Column: BGB Wax 60m / 0.25mm / 0.25um

Method: 180306 essential basis 60min



This data sheet was issued to the best of our knowledge and is supplied without warranty for its correctness or accuracy.

## Certificate of Analysis

Product: **Lavandula angustifolia AOP organic 5951**

Lot: 5951

Date of analysis: 18.12.2019 16:23:32

System: GC-430 FID

Column: BGB Wax 60m / 0.25mm / 0.25um

Method: 180306 essential basis 60min

Index	Name	Time [Min]	Area [uV.Min]	Area % [%]	Allergene
1	alpha-Pinene	6.99	140.4	0.199	
2	alpha-Thujene	7.05	80.0	0.114	
3		7.81	118.0	0.168	
4	beta-Pinene	8.62	75.6	0.107	
5		8.87	31.4	0.045	
6	delta-3-Carene	9.46	41.3	0.059	
7	Myrcene	9.71	231.3	0.328	
8	Limonene	10.56	156.3	0.222	Directive 2003/15EC (7th)
9	beta-Phellandrene	10.78	451.6	0.641	
10		10.92	57.5	0.082	
11	Cis-beta-Ocimene	11.29	3734.1	5.301	
12	gamma-Terpinene	11.61	110.3	0.157	
13	trans-beta-Ocimene	11.69	2561.9	3.637	
14	3-Octanone	11.78	393.5	0.559	
15		12.14	253.1	0.359	
16	p-Cymene	12.20	74.0	0.105	
17		12.47	30.9	0.044	
18		13.56	33.4	0.047	
19	1-Octen-3-yl acetate	14.50	493.9	0.701	
20		14.71	48.6	0.069	
21		14.87	72.9	0.104	
22		15.34	192.9	0.274	
23		15.95	256.9	0.365	
24		16.35	68.5	0.097	
25		16.56	73.3	0.104	
26	Camphor	17.74	129.7	0.184	
27	Linalool	18.04	21229.3	30.139	Directive 2003/15EC (7th)
28		18.13	49.2	0.070	
29	Linalyl acetate	18.36	23252.7	33.011	
30		18.69	33.8	0.048	
31		18.79	338.9	0.481	
32		18.96	107.4	0.152	
33		19.01	106.1	0.151	
34	Terpinene-4-ol+Lavandulyl acetate	19.30	6090.8	8.647	
35	beta-Caryophyllene	19.39	4187.6	5.945	
36		19.72	39.2	0.056	
37		20.37	34.1	0.048	
38	beta-Farnesene	20.47	1287.2	1.827	

This data sheet was issued to the best of our knowledge and is supplied without warranty for its correctness or accuracy.

## Certificate of Analysis

Product: **Lavandula angustifolia AOP organic 5951**

Lot: 5951

Date of analysis: 18.12.2019 16:23:32

System: GC-430 FID

Column: BGB Wax 60m / 0.25mm / 0.25um

Method: 180306 essential basis 60min

Index	Name	Time [Min]	Area [uV.Min]	Area % [%]	Allergene
39		20.63	787.8	1.118	
40		20.79	154.8	0.220	
41		20.84	125.0	0.177	
42		20.96	37.5	0.053	
43	alpha-Terpineol	21.08	265.8	0.377	
44	Borneol	21.21	499.1	0.709	
45		21.53	401.4	0.570	
46		21.61	114.0	0.162	
47		21.99	48.0	0.068	
48	Geranyl acetate	22.17	166.5	0.236	
49		22.44	214.3	0.304	
50		22.54	18.5	0.026	
51		22.91	117.6	0.167	
52	Geraniol	23.71	136.9	0.194	Directive 2003/15EC (7th)
53		23.74	47.2	0.067	
54		23.85	32.8	0.047	
55		26.29	33.8	0.048	
56		26.47	306.0	0.434	
57	Caryophyllene oxide	26.60	48.7	0.069	
58		29.36	170.5	0.242	
59		30.55	44.1	0.063	
Total			70438.1	100.000	

This data sheet was issued to the best of our knowledge and is supplied without warranty for its correctness or accuracy.