

# Certificate of Analysis

Product: **Lavandula hybrida grosso organic 1918**

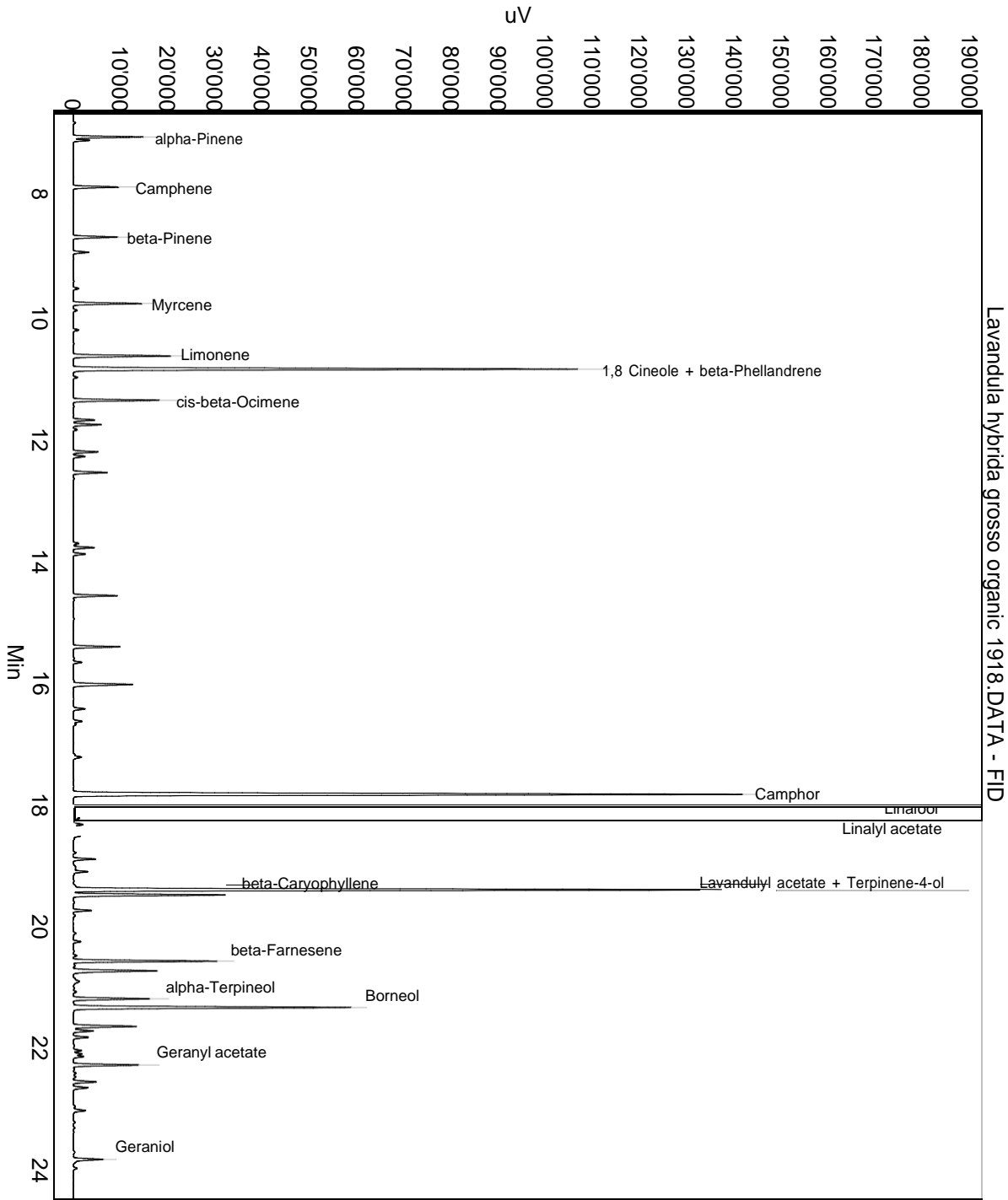
Lot: 1918

Date of analysis: 24.07.2017 18:02:00

System: GC-430 FID

Column: BGB Wax 60m / 0.25mm / 0.25um

Method: 170725 Lavandula hybrida



This data sheet was issued to the best of our knowledge and is supplied without warranty for its correctness or accuracy.

## Certificate of Analysis

Product: **Lavandula hybrida grosso organic 1918**

Lot: 1918

Date of analysis: 24.07.2017 18:02:00

System: GC-430 FID

Column: BGB Wax 60m / 0.25mm / 0.25um

Method: 170725 Lavandula hybrida

Index	Name	Time [Min]	Area [uV.Min]	Area % [%]	Allergene
1	alpha-Pinene	7.07	417.8	0.587	
2		7.12	98.3	0.138	
3	Camphene	7.89	287.1	0.403	
4	beta-Pinene	8.71	288.3	0.405	
5	Myrcene	9.80	417.9	0.587	
6	Limonene	10.66	633.3	0.889	Directive 2003/15EC (7th)
7	1,8 Cineole + beta-Phellandrene	10.88	3374.0	4.737	
8	cis-beta-Ocimene	11.39	527.2	0.740	
9		11.71	137.6	0.193	
10		11.79	175.3	0.246	
11		12.24	152.5	0.214	
12		12.58	219.9	0.309	
13		13.81	123.9	0.174	
14		14.60	267.2	0.375	
15		15.44	287.1	0.403	
16		16.06	434.4	0.610	
17	Camphor	17.86	4880.3	6.852	
18	Linalool	18.15	26626.5	37.385	Directive 2003/15EC (7th)
19		18.23	44.2	0.062	
20	Linalyl acetate	18.47	20360.7	28.588	
21		18.52	74.4	0.104	
22		18.91	141.7	0.199	
23	Lavandulyl acetate + Terpinene-4-ol	19.41	4537.1	6.370	
24	beta-Caryophyllene	19.50	992.0	1.393	
25	beta-Farnesene	20.58	899.6	1.263	
26		20.74	539.9	0.758	
27		20.91	79.9	0.112	
28	alpha-Terpineol	21.20	505.3	0.710	
29	Borneol	21.34	1930.3	2.710	
30		21.65	434.9	0.611	
31		21.72	136.2	0.191	
32		22.04	47.1	0.066	
33		22.14	113.9	0.160	
34	Geranyl acetate	22.28	419.1	0.588	
35		22.55	155.4	0.218	
36	Geraniol	23.83	212.3	0.298	Directive 2003/15EC (7th)
37		30.24	249.7	0.351	

This data sheet was issued to the best of our knowledge and is supplied without warranty for its correctness or accuracy.

## Certificate of Analysis

Product: **Lavandula hybrida grosso organic 1918**

Lot: 1918

Date of analysis: 24.07.2017 18:02:00

System: GC-430 FID

Column: BGB Wax 60m / 0.25mm / 0.25um

Method: 170725 Lavandula hybrida

Index	Name	Time [Min]	Area [uV.Min]	Area % [%]	Allergene
Total			71222.3	100.000	

This data sheet was issued to the best of our knowledge and is supplied without warranty for its correctness or accuracy.