

Certificate of Analysis

Product: **Lavandula latifolia organic 4712**

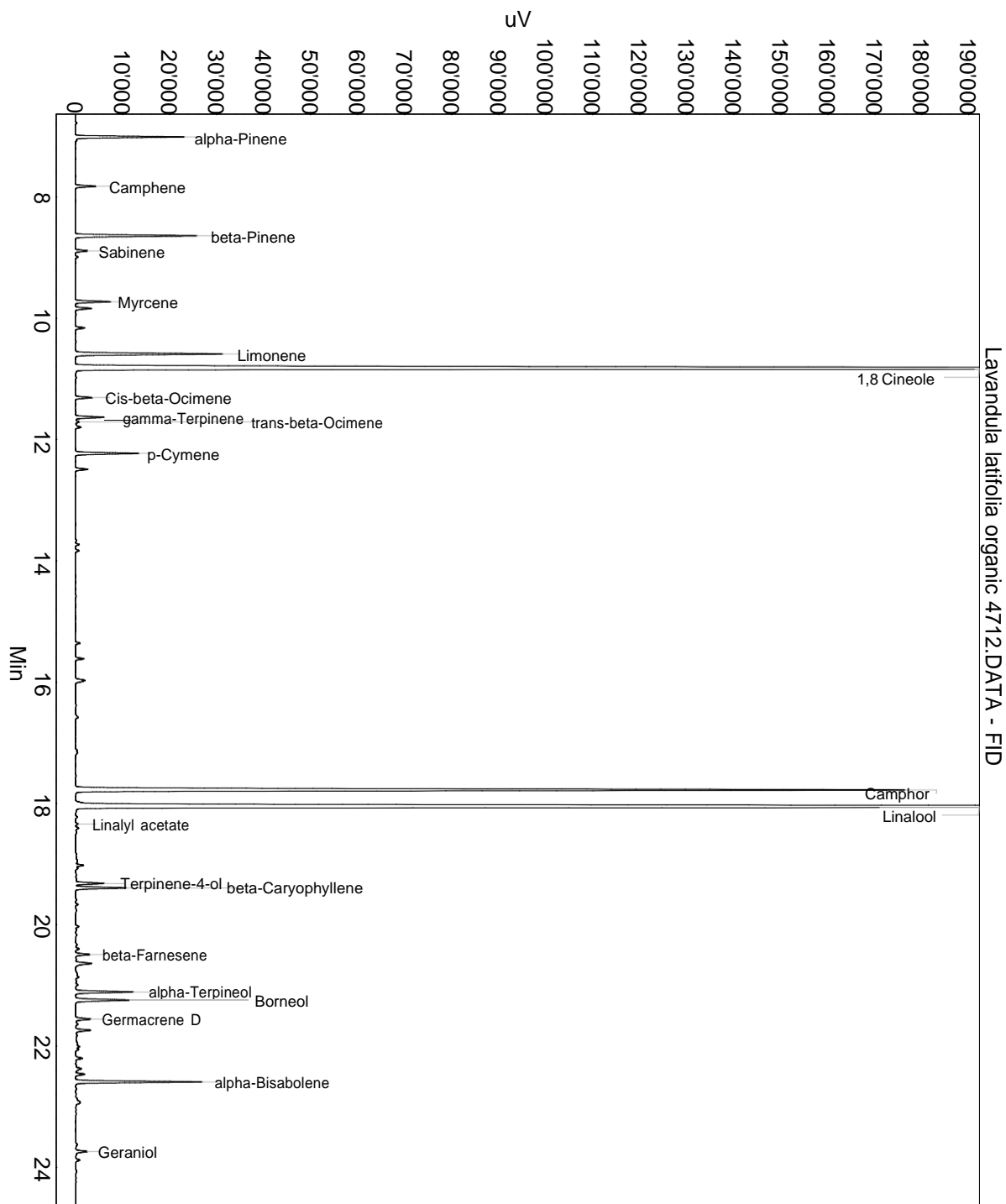
Lot: 4712

Date of analysis: 01.05.2019 04:42:39

System: GC-430 FID

Column: BGB Wax 60m / 0.25mm / 0.25um

Method: 180306 essential basis 60min



This data sheet was issued to the best of our knowledge and is supplied without warranty for its correctness or accuracy.

Certificate of Analysis

Product: **Lavandula latifolia organic 4712**

Lot: 4712

Date of analysis: 01.05.2019 04:42:39

System: GC-430 FID

Column: BGB Wax 60m / 0.25mm / 0.25um

Method: 180306 essential basis 60min

Index	Name	Time [Min]	Area [uV.Min]	Area % [%]	Allergene
1	alpha-Pinene	7.01	653.6	1.447	
2	Camphene	7.83	132.4	0.293	
3	beta-Pinene	8.64	783.4	1.735	
4	Sabinene	8.89	79.1	0.175	
5	Myrcene	9.73	218.2	0.483	
6		9.84	103.6	0.229	
7		10.16	59.6	0.132	
8	Limonene	10.59	995.3	2.204	Directive 2003/15EC (7th)
9	1,8 Cineole	10.83	14704.6	32.566	
10	Cis-beta-Ocimene	11.31	107.8	0.239	
11	gamma-Terpinene	11.63	186.0	0.412	
12	trans-beta-Ocimene	11.71	28.3	0.063	
13		11.80	43.4	0.096	
14	p-Cymene	12.23	412.8	0.914	
15		12.49	83.6	0.185	
16		13.73	22.5	0.050	
17		13.83	25.4	0.056	
18		15.36	29.3	0.065	
19		15.61	52.1	0.115	
20		15.97	93.2	0.206	
21	Camphor	17.78	6062.4	13.426	
22	Linalool	18.05	17156.1	37.995	Directive 2003/15EC (7th)
23	Linalyl acetate	18.34	12.2	0.027	
24		19.02	43.2	0.096	
25		19.07	13.1	0.029	
26	Terpinene-4-ol	19.32	187.3	0.415	
27	beta-Caryophyllene	19.39	330.2	0.731	
28		20.03	29.0	0.064	
29		20.40	22.9	0.051	
30	beta-Farnesene	20.49	101.8	0.225	
31		20.64	130.5	0.289	
32	alpha-Terpineol	21.11	385.2	0.853	
33	Borneol	21.24	379.6	0.841	
34	Germacrene D	21.55	106.9	0.237	
35		21.64	18.9	0.042	
36		21.74	107.6	0.238	
37		22.01	19.7	0.044	
38		22.06	15.0	0.033	

This data sheet was issued to the best of our knowledge and is supplied without warranty for its correctness or accuracy.

Certificate of Analysis

Product: **Lavandula latifolia organic 4712**

Lot: 4712

Date of analysis: 01.05.2019 04:42:39

System: GC-430 FID

Column: BGB Wax 60m / 0.25mm / 0.25um

Method: 180306 essential basis 60min

Index	Name	Time [Min]	Area [uV.Min]	Area % [%]	Allergene
39		22.20	46.2	0.102	
40		22.37	39.3	0.087	
41		22.46	59.9	0.133	
42	alpha-Bisabolene	22.59	802.1	1.777	
43		22.94	52.1	0.115	
44	Geraniol	23.74	79.7	0.177	Directive 2003/15EC (7th)
45		23.88	27.6	0.061	
46		26.50	37.4	0.083	
47		29.39	42.9	0.095	
48	Coumarin	36.37	29.9	0.066	Directive 2003/15EC (7th)
Total			45153.2	100.000	

This data sheet was issued to the best of our knowledge and is supplied without warranty for its correctness or accuracy.