

Certificate of Analysis

Product: **Matricaria recutita 4656**

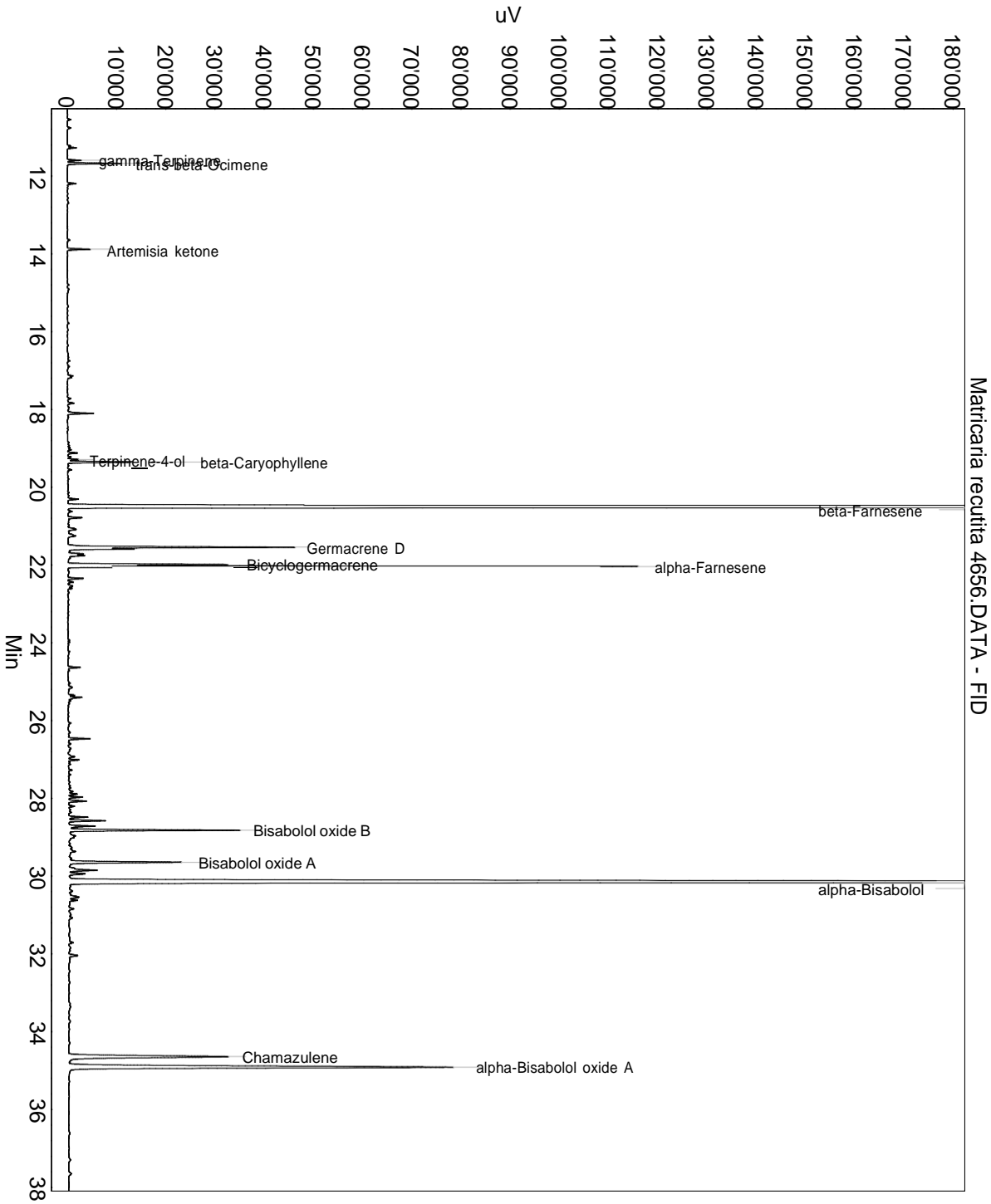
Lot: 4656

Date of analysis: 29.03.2019 11:09:12

System: GC-430 FID

Column: BGB Wax 60m / 0.25mm / 0.25um

Method: 180306 essential basis 60min



This data sheet was issued to the best of our knowledge and is supplied without warranty for its correctness or accuracy.

Certificate of Analysis

Product: **Matricaria recutita 4656**

Lot: 4656

Date of analysis: 29.03.2019 11:09:12

System: GC-430 FID

Column: BGB Wax 60m / 0.25mm / 0.25um

Method: 180306 essential basis 60min

Index	Name	Time [Min]	Area [uV.Min]	Area % [%]	Allergene
1	alpha-Pinene	6.98	22.3	0.035	
2		7.46	26.0	0.040	
3	beta-Pinene	8.61	23.0	0.036	
4		11.28	45.6	0.071	
5	gamma-Terpinene	11.60	87.3	0.135	
6	trans-beta-Ocimene	11.68	320.5	0.497	
7		12.20	56.8	0.088	
8	Artemisia ketone	13.88	139.9	0.217	
9		17.14	62.2	0.096	
10		17.84	45.2	0.070	
11		18.10	188.1	0.292	
12		19.12	62.9	0.098	
13	Terpinene-4-ol	19.29	64.9	0.101	
14	beta-Caryophyllene	19.35	566.1	0.878	
15		20.31	71.6	0.111	
16	beta-Farnesene	20.52	24039.1	37.265	
17		20.63	34.5	0.053	
18		20.79	97.1	0.151	
19		21.09	88.0	0.136	
20		21.25	28.3	0.044	
21	Germacrene D	21.54	1604.9	2.488	
22		21.59	393.1	0.609	
23		21.71	108.3	0.168	
24		21.76	123.1	0.191	
25		21.82	16.7	0.026	
26	Bicyclogermacrene	21.99	1039.1	1.611	
27	alpha-Farnesene	22.04	3487.6	5.406	
28		22.35	102.5	0.159	
29		22.44	37.9	0.059	
30		24.63	77.3	0.120	
31		25.35	35.8	0.056	
32		25.40	97.4	0.151	
33		26.47	150.2	0.233	
34		26.93	50.2	0.078	
35		27.01	66.2	0.103	
36		27.89	47.3	0.073	
37		27.97	90.7	0.141	
38		28.07	135.6	0.210	

This data sheet was issued to the best of our knowledge and is supplied
without warranty for its correctness or accuracy.

Certificate of Analysis

Product: **Matricaria recutita 4656**

Lot: 4656

Date of analysis: 29.03.2019 11:09:12

System: GC-430 FID

Column: BGB Wax 60m / 0.25mm / 0.25um

Method: 180306 essential basis 60min

Index	Name	Time [Min]	Area [uV.Min]	Area % [%]	Allergene
39		28.20	37.9	0.059	
40		28.48	130.0	0.202	
41		28.58	251.8	0.390	
42		28.71	198.0	0.307	
43	Bisabolol oxide B	28.82	1208.9	1.874	
44	Bisabolol oxide A	29.64	906.0	1.404	
45		29.80	34.6	0.054	
46		29.85	234.7	0.364	
47		29.94	137.1	0.213	
48	alpha-Bisabolol	30.16	20631.2	31.982	
49		30.54	93.0	0.144	
50		30.62	57.9	0.090	
51		30.84	41.5	0.064	
52		32.04	81.5	0.126	
53	Chamazulene	34.64	2014.1	3.122	
54	alpha-Bisabolol oxide A	34.91	4716.8	7.312	
Total			64508.1	100.000	

This data sheet was issued to the best of our knowledge and is supplied without warranty for its correctness or accuracy.