

Certificate of Analysis

Product: **Mentha citrata organic 2191**

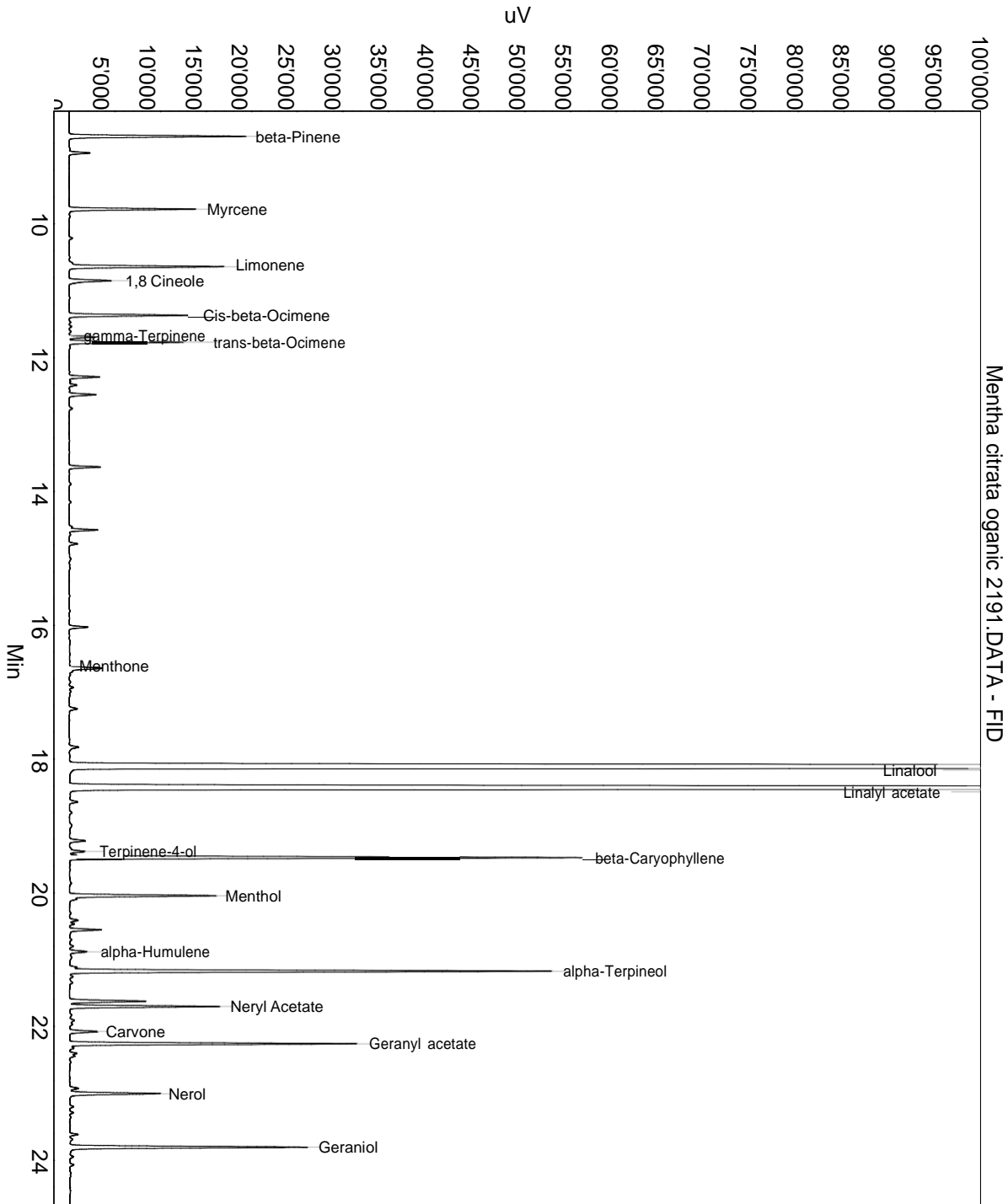
Lot: 2191

Date of analysis: 19.10.2017 01:35:07

System: GC-430 FID

Column: BGB Wax 60m / 0.25mm / 0.25um

Method: 120102 essential basis 60



This data sheet was issued to the best of our knowledge and is supplied without warranty for its correctness or accuracy.

Certificate of Analysis

Product: **Mentha citrata oganic 2191**

Lot: 2191

Date of analysis: 19.10.2017 01:35:07

System: GC-430 FID

Column: BGB Wax 60m / 0.25mm / 0.25um

Method: 120102 essential basis 60

Index	Name	Time [Min]	Area [uV.Min]	Area % [%]	Allergene
1	alpha-Thujene	7.05	48.6	0.085	
2	beta-Pinene	8.69	589.2	1.031	
3		8.94	66.4	0.116	
4	Myrcene	9.78	397.9	0.696	
5	Limonene	10.64	530.0	0.927	Directive 2003/15EC (7th)
6	1,8 Cineole	10.85	166.8	0.292	
7	Cis-beta-Ocimene	11.37	378.0	0.661	
8	gamma-Terpinene	11.66	86.7	0.152	
9	trans-beta-Ocimene	11.77	365.5	0.640	
10		12.29	103.5	0.181	
11		12.55	91.8	0.161	
12		13.63	100.3	0.175	
13		14.57	96.8	0.169	
14		16.03	64.3	0.112	
15		16.59	36.4	0.064	
16	Menthone	16.61	87.7	0.154	
17	Linalool	18.13	27282.4	47.735	Directive 2003/15EC (7th)
18	Linalyl acetate	18.44	19089.6	33.400	
19		19.22	61.3	0.107	
20	Terpinene-4-ol	19.38	60.1	0.105	
21	beta-Caryophyllene	19.47	1735.9	3.037	
22	Menthol	20.04	530.6	0.928	
23		20.55	103.7	0.181	
24	alpha-Humulene	20.88	62.8	0.110	
25	alpha-Terpineol	21.17	1665.0	2.913	
26		21.62	271.0	0.474	
27	Neryl Acetate	21.70	483.5	0.846	
28	Carvone	22.07	102.9	0.180	
29	Geranyl acetate	22.26	928.4	1.624	
30	Nerol	23.00	313.1	0.548	
31	Geraniol	23.80	806.7	1.412	Directive 2003/15EC (7th)
32		26.56	113.0	0.198	
33		27.87	118.4	0.207	
34		28.06	215.5	0.377	
Total			57153.6	100.000	

This data sheet was issued to the best of our knowledge and is supplied without warranty for its correctness or accuracy.