

Certificate of Analysis

Product: **Mentha piperita organic 6461**

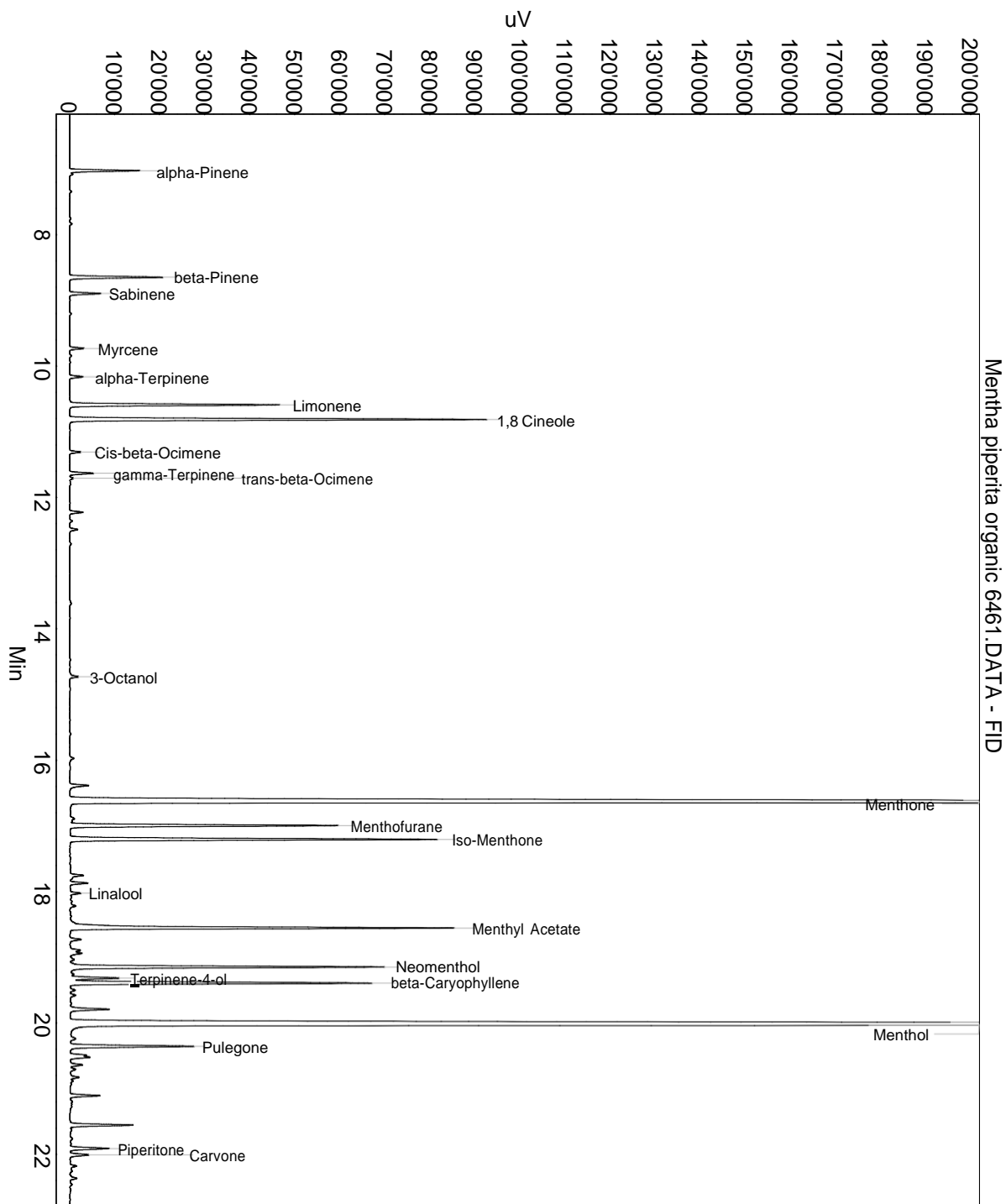
Lot: 6461

Date of analysis: 04.06.2020 10:20:38

System: GC-430 FID

Column: BGB Wax 60m / 0.25mm / 0.25um

Method: 180306 essential basis 60min



This data sheet was issued to the best of our knowledge and is supplied without warranty for its correctness or accuracy.

Certificate of Analysis

Product: Mentha piperita organic 6461

Lot: 6461

Date of analysis: 04.06.2020 10:20:38

System: GC-430 FID

Column: BGB Wax 60m / 0.25mm / 0.25um

Method: 180306 essential basis 60min

Index	Name	Time [Min]	Area [uV.Min]	Area % [%]	Allergene
1	alpha-Pinene	7.03	436.0	0.710	
2	beta-Pinene	8.65	634.5	1.033	
3	Sabinene	8.90	208.5	0.340	
4	Myrcene	9.73	94.4	0.154	
5	alpha-Terpinene	10.16	93.1	0.152	
6	Limonene	10.59	1429.8	2.328	Directive 2003/15EC (7th)
7	1,8 Cineole	10.81	2912.4	4.742	
8	Cis-beta-Ocimene	11.31	73.2	0.119	
9	gamma-Terpinene	11.63	162.9	0.265	
10	trans-beta-Ocimene	11.71	22.3	0.036	
11		12.23	92.3	0.150	
12		12.49	57.8	0.094	
13	3-Octanol	14.73	66.5	0.108	
14		15.97	36.2	0.059	
15		16.39	151.7	0.247	
16	Menthone	16.63	16811.7	27.373	
17		16.89	55.5	0.090	
18	Menthofurane	17.00	1950.1	3.175	
19	Iso-Menthone	17.21	2667.5	4.343	
20		17.75	107.1	0.174	
21		17.87	118.8	0.193	
22	Linalool	18.03	79.5	0.129	Directive 2003/15EC (7th)
23		18.15	31.9	0.052	
24		18.22	53.3	0.087	
25	Menthyl Acetate	18.55	2870.4	4.674	
26		18.73	84.0	0.137	
27		18.89	82.4	0.134	
28		18.94	101.7	0.166	
29		19.04	38.0	0.062	
30	Neomenthol	19.15	2245.2	3.656	
31		19.26	27.7	0.045	
32	Terpinene-4-ol	19.32	352.8	0.574	
33	beta-Caryophyllene	19.39	2183.0	3.554	
34		19.50	38.3	0.062	
35		19.58	45.9	0.075	
36		19.79	296.1	0.482	
37	Menthol	20.02	21901.0	35.660	
38		20.24	62.6	0.102	

This data sheet was issued to the best of our knowledge and is supplied without warranty for its correctness or accuracy.

Certificate of Analysis

Product: **Mentha piperita organic 6461**

Lot: 6461

Date of analysis: 04.06.2020 10:20:38

System: GC-430 FID

Column: BGB Wax 60m / 0.25mm / 0.25um

Method: 180306 essential basis 60min

Index	Name	Time [Min]	Area [uV.Min]	Area % [%]	Allergene
39	Pulegone	20.36	927.2	1.510	
40		20.52	239.2	0.389	
41		20.64	96.8	0.158	
42		20.71	48.0	0.078	
43		20.83	70.2	0.114	
44		20.88	32.4	0.053	
45		21.11	203.9	0.332	
46		21.55	453.7	0.739	
47		21.63	16.9	0.027	
48	Piperitone	21.91	285.2	0.464	
49	Carvone	22.01	146.0	0.238	
50		22.18	72.0	0.117	
51		22.37	52.1	0.085	
52		24.85	30.1	0.049	
53		26.49	28.7	0.047	
54	Viridiflorol	27.99	38.1	0.062	
Total			61416.6	100.000	

This data sheet was issued to the best of our knowledge and is supplied without warranty for its correctness or accuracy.