

# Certificate of Analysis

Product: **Pelargonium graveolens organic 8532**

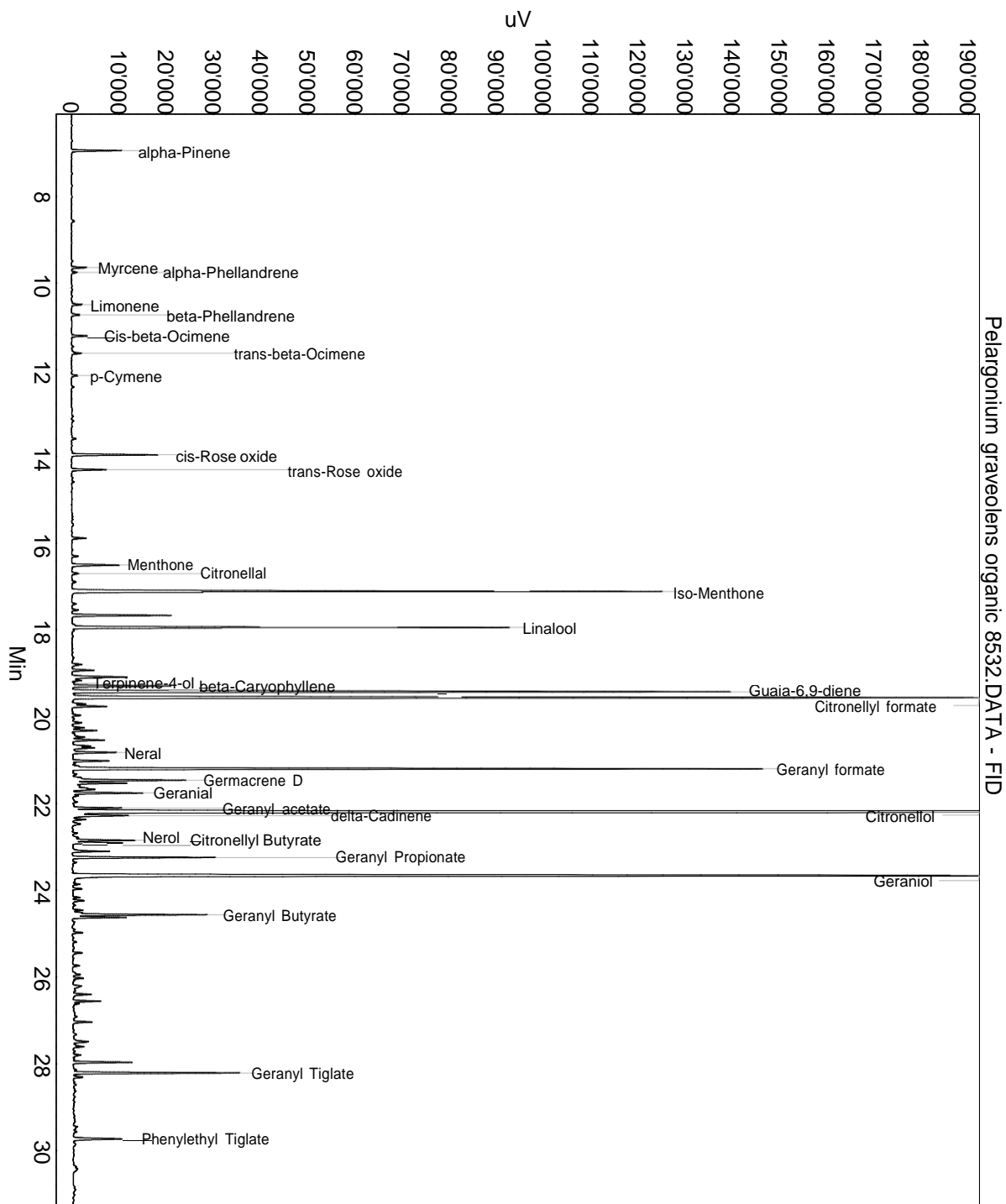
Lot: 8532

Date of analysis: 22.04.2021 19:55:38

System: GC-430 FID

Column: BGB Wax 60m / 0.25mm / 0.25um

Method: 180306 essential basis 60min



This data sheet was issued to the best of our knowledge and is supplied without warranty for its correctness or accuracy.

## Certificate of Analysis

**Product: Pelargonium graveolens organic 8532**

Lot: 8532

Date of analysis: 22.04.2021 19:55:38

System: GC-430 FID

Column: BGB Wax 60m / 0.25mm / 0.25um

Method: 180306 essential basis 60min

Index	Name	Time [Min]	Area [uV.Min]	Area % [%]	Allergene
1	alpha-Pinene	6.95	298.2	0.475	
2	Myrcene	9.64	95.8	0.153	
3	alpha-Phellandrene	9.75	40.4	0.064	
4	Limonene	10.50	68.6	0.109	Directive 2003/15EC (7th)
5	beta-Phellandrene	10.73	62.4	0.099	
6	Cis-beta-Ocimene	11.22	97.0	0.155	
7	trans-beta-Ocimene	11.62	72.9	0.116	
8	p-Cymene	12.13	44.4	0.071	
9		13.59	28.6	0.045	
10	cis-Rose oxide	13.96	559.7	0.892	
11	trans-Rose oxide	14.30	228.0	0.363	
12		15.88	98.0	0.156	
13		16.30	43.3	0.069	
14	Menthone	16.50	353.5	0.563	
15	Citronellal	16.70	56.4	0.090	
16		16.89	34.2	0.054	
17	Iso-Menthone	17.11	4330.2	6.900	
18		17.40	35.7	0.057	
19		17.54	47.8	0.076	
20		17.66	666.5	1.062	
21	Linalool	17.94	2708.1	4.315	Directive 2003/15EC (7th)
22		18.01	15.7	0.025	
23		18.79	82.6	0.132	
24		18.93	148.4	0.236	
25		19.08	446.8	0.712	
26		19.16	66.9	0.107	
27	Terpinene-4-ol	19.23	21.9	0.035	
28	beta-Caryophyllene	19.29	668.9	1.066	
29	Guaia-6,9-diene	19.42	4650.5	7.411	
30	Citronellyl formate	19.56	6750.3	10.757	
31		19.70	97.6	0.155	
32		19.76	236.6	0.377	
33		19.96	56.3	0.090	
34		20.14	95.9	0.153	
35		20.25	86.5	0.138	
36		20.32	152.8	0.243	
37		20.40	18.8	0.030	
38		20.47	102.5	0.163	

This data sheet was issued to the best of our knowledge and is supplied without warranty for its correctness or accuracy.

## Certificate of Analysis

Product: **Pelargonium graveolens organic 8532**

Lot: 8532

Date of analysis: 22.04.2021 19:55:38

System: GC-430 FID

Column: BGB Wax 60m / 0.25mm / 0.25um

Method: 180306 essential basis 60min

Index	Name	Time [Min]	Area [uV.Min]	Area % [%]	Allergene
39		20.54	227.2	0.362	
40		20.67	129.7	0.207	
41		20.72	157.0	0.250	
42	Neral	20.82	325.1	0.518	(= Citral ) Directive 2003/15EC (7th)
43		21.02	242.3	0.386	
44		21.08	17.8	0.028	
45		21.14	36.3	0.058	
46	Geranyl formate	21.20	4456.4	7.101	
47		21.32	36.6	0.058	
48		21.41	64.2	0.102	
49	Germacrene D	21.46	807.7	1.287	
50		21.53	375.7	0.599	
51		21.59	78.4	0.125	
52		21.65	82.8	0.132	
53		21.67	175.1	0.279	
54	Geranial	21.75	472.7	0.753	(= Citral ) Directive 2003/15EC (7th)
55		21.82	42.6	0.068	
56	Geranyl acetate	22.10	304.4	0.485	
57	Citronellol	22.19	13536.7	21.571	Directive 2003/15EC (7th)
58	delta-Cadinene	22.28	451.5	0.720	
59		22.37	96.0	0.153	
60		22.47	81.6	0.130	
61		22.68	32.9	0.052	
62		22.78	60.0	0.096	
63	Nerol	22.85	427.6	0.681	
64	Citronellyl Butyrate	22.91	322.6	0.514	
65		23.10	259.1	0.413	
66	Geranyl Propionate	23.24	888.0	1.415	
67		23.36	30.7	0.049	
68	Geraniol	23.66	9981.3	15.905	Directive 2003/15EC (7th)
69		23.86	51.1	0.081	
70		23.97	62.0	0.099	
71		24.17	45.4	0.072	
72		24.24	84.1	0.134	
73		24.46	70.4	0.112	
74		24.52	53.9	0.086	
75	Geranyl Butyrate	24.56	855.8	1.364	
76		24.62	334.1	0.532	

This data sheet was issued to the best of our knowledge and is supplied without warranty for its correctness or accuracy.

## Certificate of Analysis

Product: **Pelargonium graveolens organic 8532**

Lot: 8532

Date of analysis: 22.04.2021 19:55:38

System: GC-430 FID

Column: BGB Wax 60m / 0.25mm / 0.25um

Method: 180306 essential basis 60min

Index	Name	Time [Min]	Area [uV.Min]	Area % [%]	Allergene
77		24.98	58.5	0.093	
78		25.19	33.7	0.054	
79		25.44	69.7	0.111	
80		25.74	52.4	0.083	
81		25.94	78.8	0.126	
82		26.02	79.2	0.126	
83		26.08	14.2	0.023	
84		26.21	132.9	0.212	
85		26.40	143.9	0.229	
86		26.56	176.2	0.281	
87		26.61	39.8	0.063	
88		27.03	129.6	0.207	
89		27.49	138.4	0.221	
90		27.60	77.6	0.124	
91		27.80	48.2	0.077	
92		27.96	393.8	0.628	
93	Geranyl Tiglate	28.21	1071.0	1.707	
94		28.31	64.3	0.102	
95		29.45	24.4	0.039	
96	Phenylethyl Tiglate	29.73	393.0	0.626	
97		32.42	109.3	0.174	
Total			62754.1	100.000	

This data sheet was issued to the best of our knowledge and is supplied without warranty for its correctness or accuracy.