

Certificate of Analysis

Product: **pelargonium graveolens organic 4502**

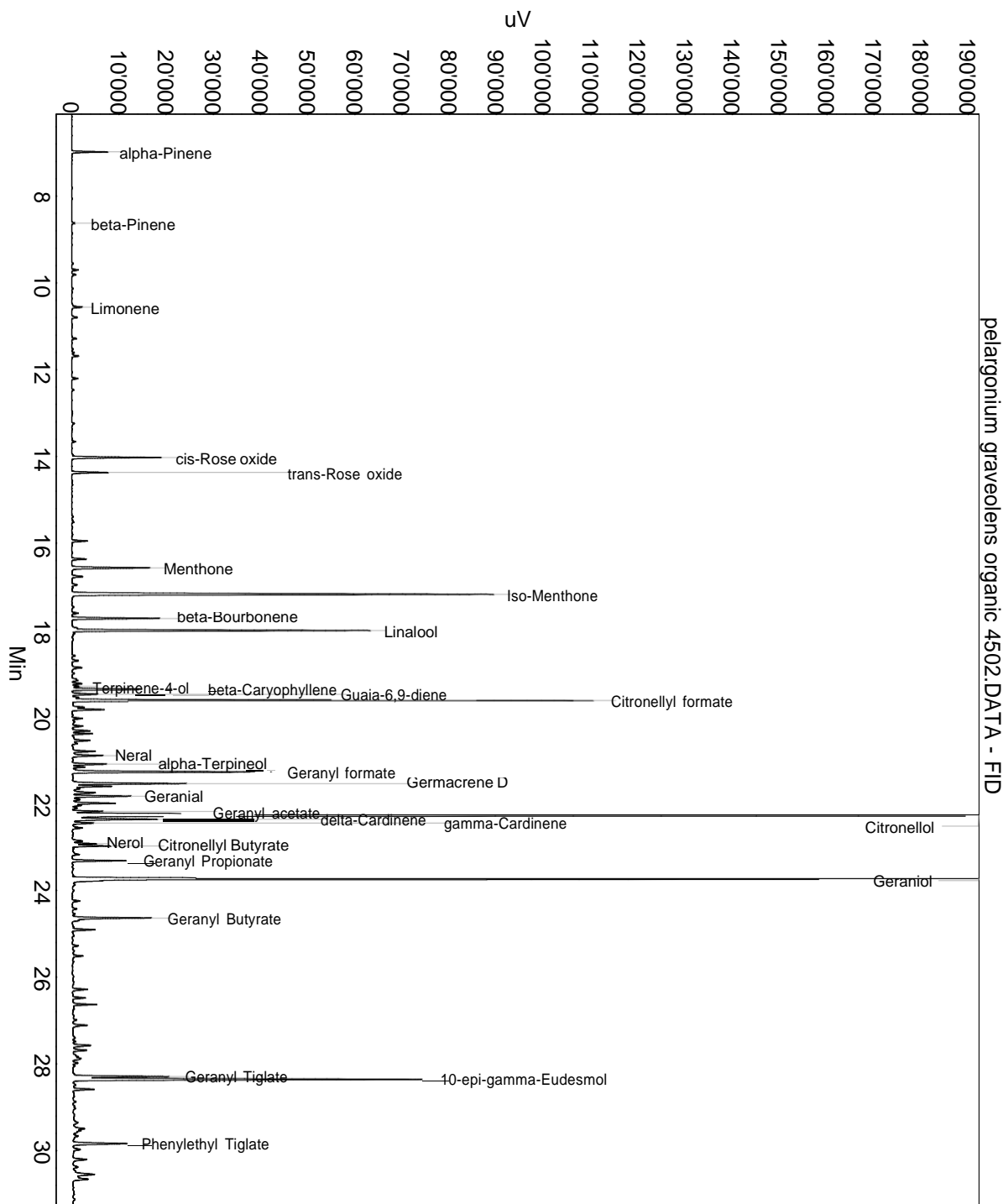
Lot: 4502

Date of analysis: 22.03.2019 11:21:31

System: GC-430 FID

Column: BGB Wax 60m / 0.25mm / 0.25um

Method: 180306 essential basis 60min



This data sheet was issued to the best of our knowledge and is supplied without warranty for its correctness or accuracy.

Certificate of Analysis

Product: **pelargonium graveolens organic 4502**

Lot: 4502

Date of analysis: 22.03.2019 11:21:31

System: GC-430 FID

Column: BGB Wax 60m / 0.25mm / 0.25um

Method: 180306 essential basis 60min

Index	Name	Time [Min]	Area [uV.Min]	Area % [%]	Allergene
1	alpha-Pinene	6.98	217.5	0.444	
2	beta-Pinene	8.62	23.9	0.049	
3		9.70	42.1	0.086	
4		9.81	30.3	0.062	
5	Limonene	10.56	59.2	0.121	Directive 2003/15EC (7th)
6		10.79	43.2	0.088	
7		11.28	29.7	0.061	
8		11.68	44.5	0.091	
9		12.20	42.7	0.087	
10		13.66	23.2	0.047	
11	cis-Rose oxide	14.02	572.1	1.168	
12	trans-Rose oxide	14.37	239.6	0.489	
13		15.95	103.8	0.212	
14		16.36	95.2	0.194	
15	Menthone	16.57	541.7	1.106	
16		16.77	84.8	0.173	
17		16.96	44.1	0.090	
18	Iso-Menthone	17.18	3127.9	6.388	
19		17.61	43.9	0.090	
20	beta-Bourbonene	17.73	590.0	1.205	
21		17.96	33.3	0.068	
22	Linalool	18.01	1835.4	3.748	Directive 2003/15EC (7th)
23		18.08	21.3	0.044	
24		18.70	49.0	0.100	
25		18.87	71.7	0.146	
26		19.13	14.8	0.030	
27		19.16	13.7	0.028	
28		19.23	60.8	0.124	
29	Terpinene-4-ol	19.30	51.3	0.105	
30	beta-Caryophyllene	19.37	661.0	1.350	
31	Guaia-6,9-diene	19.48	176.2	0.360	
32	Citronellyl formate	19.62	3185.9	6.506	
33		19.78	87.9	0.179	
34		19.83	223.0	0.455	
35		20.04	71.6	0.146	
36		20.11	31.7	0.065	
37		20.21	79.0	0.161	
38		20.32	127.0	0.259	

This data sheet was issued to the best of our knowledge and is supplied without warranty for its correctness or accuracy.

Certificate of Analysis

Product: **pelargonium graveolens organic 4502**

Lot: 4502

Date of analysis: 22.03.2019 11:21:31

System: GC-430 FID

Column: BGB Wax 60m / 0.25mm / 0.25um

Method: 180306 essential basis 60min

Index	Name	Time [Min]	Area [uV.Min]	Area % [%]	Allergene
39		20.39	128.0	0.261	
40		20.54	152.3	0.311	
41		20.61	42.6	0.087	
42		20.71	11.8	0.024	
43		20.79	171.0	0.349	
44	Neral	20.89	251.6	0.514	(= Citral) Directive 2003/15EC (7th)
45	alpha-Terpineol	21.09	238.7	0.487	
46		21.16	85.6	0.175	
47	Geranyl formate	21.27	1329.3	2.715	
48	Germacrene D	21.54	805.9	1.646	
49		21.60	271.8	0.555	
50		21.66	56.3	0.115	
51		21.75	199.7	0.408	
52	Geranial	21.83	416.6	0.851	(= Citral) Directive 2003/15EC (7th)
53		21.91	64.0	0.131	
54		21.99	309.3	0.632	
55		22.04	55.0	0.112	
56		22.10	34.6	0.071	
57	Geranyl acetate	22.18	193.2	0.394	
58	Citronellol	22.27	16081.1	32.840	Directive 2003/15EC (7th)
59	delta-Cardinene	22.36	652.6	1.333	
60	gamma-Cardinene	22.45	156.1	0.319	
61		22.56	80.2	0.164	
62		22.86	85.0	0.173	
63	Nerol	22.92	161.7	0.330	
64	Citronellyl Butyrate	22.98	250.6	0.512	
65		23.17	68.3	0.140	
66	Geranyl Propionate	23.32	331.4	0.677	
67	Geraniol	23.74	6667.2	13.615	Directive 2003/15EC (7th)
68		23.77	173.0	0.353	
69		24.24	53.0	0.108	
70		24.43	31.0	0.063	
71	Geranyl Butyrate	24.64	544.3	1.112	
72		24.68	46.8	0.096	
73		24.91	163.2	0.333	
74		25.28	44.4	0.091	
75		25.51	79.3	0.162	
76		26.28	115.4	0.236	

This data sheet was issued to the best of our knowledge and is supplied
without warranty for its correctness or accuracy.

Certificate of Analysis

Product: **pelargonium graveolens organic 4502**

Lot: 4502

Date of analysis: 22.03.2019 11:21:31

System: GC-430 FID

Column: BGB Wax 60m / 0.25mm / 0.25um

Method: 180306 essential basis 60min

Index	Name	Time [Min]	Area [uV.Min]	Area % [%]	Allergene
77		26.48	97.1	0.198	
78		26.63	157.6	0.322	
79		26.99	27.1	0.055	
80		27.11	112.9	0.231	
81		27.57	149.1	0.305	
82		27.68	101.0	0.206	
83		27.87	77.4	0.158	
84		27.98	35.1	0.072	
85		28.04	16.7	0.034	
86	Geranyl Tiglate	28.29	639.7	1.306	
87	10-epi-gamma-Eudesmol	28.36	2516.6	5.139	
88		28.58	153.6	0.314	
89		29.35	51.3	0.105	
90		29.49	102.3	0.209	
91		29.54	83.6	0.171	
92		29.66	43.3	0.088	
93		29.71	9.9	0.020	
94	Phenylethyl Tiglate	29.84	445.6	0.910	
95		29.97	64.8	0.132	
96		30.20	123.6	0.252	
97		30.37	49.5	0.101	
98		30.55	299.4	0.611	
99		30.65	146.8	0.300	
100		32.61	67.9	0.139	
Total			48967.9	100.000	

This data sheet was issued to the best of our knowledge and is supplied without warranty for its correctness or accuracy.