

Certificate of Analysis

Product: **Picea glauca organic 1477**

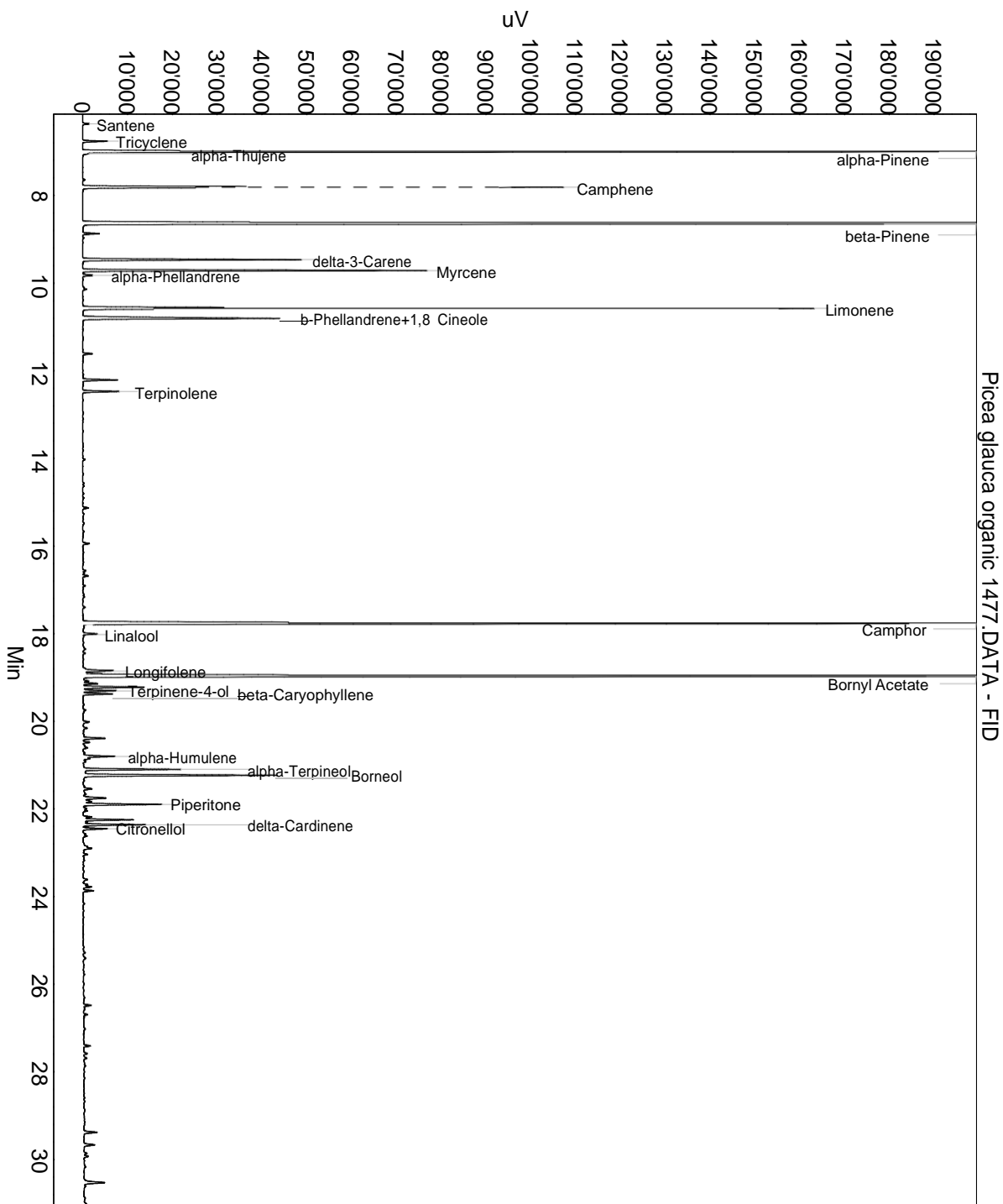
Lot: 1477

Date of analysis: 29.05.2019 17:22:25

System: GC-430 FID

Column: BGB Wax 60m / 0.25mm / 0.25um

Method: 180306 essential basis 60min



This data sheet was issued to the best of our knowledge and is supplied without warranty for its correctness or accuracy.

Certificate of Analysis

Product: **Picea glauca organic 1477**

Lot: 1477

Date of analysis: 29.05.2019 17:22:25

System: GC-430 FID

Column: BGB Wax 60m / 0.25mm / 0.25um

Method: 180306 essential basis 60min

Index	Name	Time [Min]	Area [uV.Min]	Area % [%]	Allergene
1	Santene	6.37	40.2	0.068	
2	Tricyclene	6.76	157.6	0.269	
3	alpha-Pinene	7.00	6447.7	10.984	
4	alpha-Thujene	7.05	32.7	0.056	
5	Camphene	7.81	3145.9	5.359	
6	beta-Pinene	8.64	12897.2	21.970	
7		8.87	108.5	0.185	
8	delta-3-Carene	9.46	1450.9	2.472	
9	Myrcene	9.71	2167.8	3.693	
10	alpha-Phellandrene	9.82	70.4	0.120	
11		10.14	31.3	0.053	
12	Limonene	10.58	5057.3	8.615	Directive 2003/15EC (7th)
13	b-Phellandrene+1,8 Cineole	10.80	1648.1	2.808	
14		11.61	64.2	0.109	
15		12.21	238.0	0.406	
16	Terpinolene	12.47	250.2	0.426	
17		15.13	42.2	0.072	
18		15.94	50.2	0.085	
19		16.56	37.6	0.064	
20		16.68	41.0	0.070	
21	Camphor	17.77	8497.8	14.476	
22	Linalool	18.02	107.7	0.183	Directive 2003/15EC (7th)
23	Longifolene	18.86	270.9	0.461	
24	Bornyl Acetate	18.97	8873.9	15.117	
25		19.08	41.1	0.070	
26		19.14	99.1	0.169	
27		19.22	457.7	0.780	
28	Terpinene-4-ol	19.30	234.3	0.399	
29	beta-Caryophyllene	19.38	202.6	0.345	
30		19.75	31.9	0.054	
31		20.02	51.4	0.088	
32		20.16	33.3	0.057	
33		20.39	160.9	0.274	
34		20.48	43.1	0.073	
35		20.61	51.1	0.087	
36	alpha-Humulene	20.80	240.5	0.410	
37		20.85	47.9	0.082	
38		20.92	21.6	0.037	

This data sheet was issued to the best of our knowledge and is supplied without warranty for its correctness or accuracy.

Certificate of Analysis

Product: **Picea glauca organic 1477**

Lot: 1477

Date of analysis: 29.05.2019 17:22:25

System: GC-430 FID

Column: BGB Wax 60m / 0.25mm / 0.25um

Method: 180306 essential basis 60min

Index	Name	Time [Min]	Area [uV.Min]	Area % [%]	Allergene
39	alpha-Terpineol	21.10	699.5	1.192	
40	Borneol	21.23	1431.8	2.439	
41		21.54	60.6	0.103	
42		21.66	24.7	0.042	
43		21.75	202.6	0.345	
44		21.83	80.0	0.136	
45	Piperitone	21.90	579.0	0.986	
46		21.99	31.0	0.053	
47		22.04	29.2	0.050	
48		22.18	62.7	0.107	
49		22.25	384.9	0.656	
50	delta-Cardinene	22.36	442.8	0.754	
51	Citronellol	22.45	174.1	0.297	Directive 2003/15EC (7th)
52		22.62	20.4	0.035	
53		22.90	97.5	0.166	
54		23.04	30.3	0.052	
55		23.61	42.1	0.072	
56		23.73	33.9	0.058	
57		23.78	69.8	0.119	
58		23.87	77.0	0.131	
59		26.48	59.5	0.101	
60		26.58	18.5	0.031	
61		26.69	35.0	0.060	
62		27.41	49.6	0.084	
63		27.58	29.9	0.051	
64		27.69	26.5	0.045	
65		29.38	111.7	0.190	
66		29.67	93.8	0.160	
67		29.93	30.5	0.052	
68		30.53	213.9	0.364	
69		30.61	13.8	0.023	
Total			58702.6	100.000	

This data sheet was issued to the best of our knowledge and is supplied
without warranty for its correctness or accuracy.