

Certificate of Analysis

Product: **Pimpinella anisum 6251**

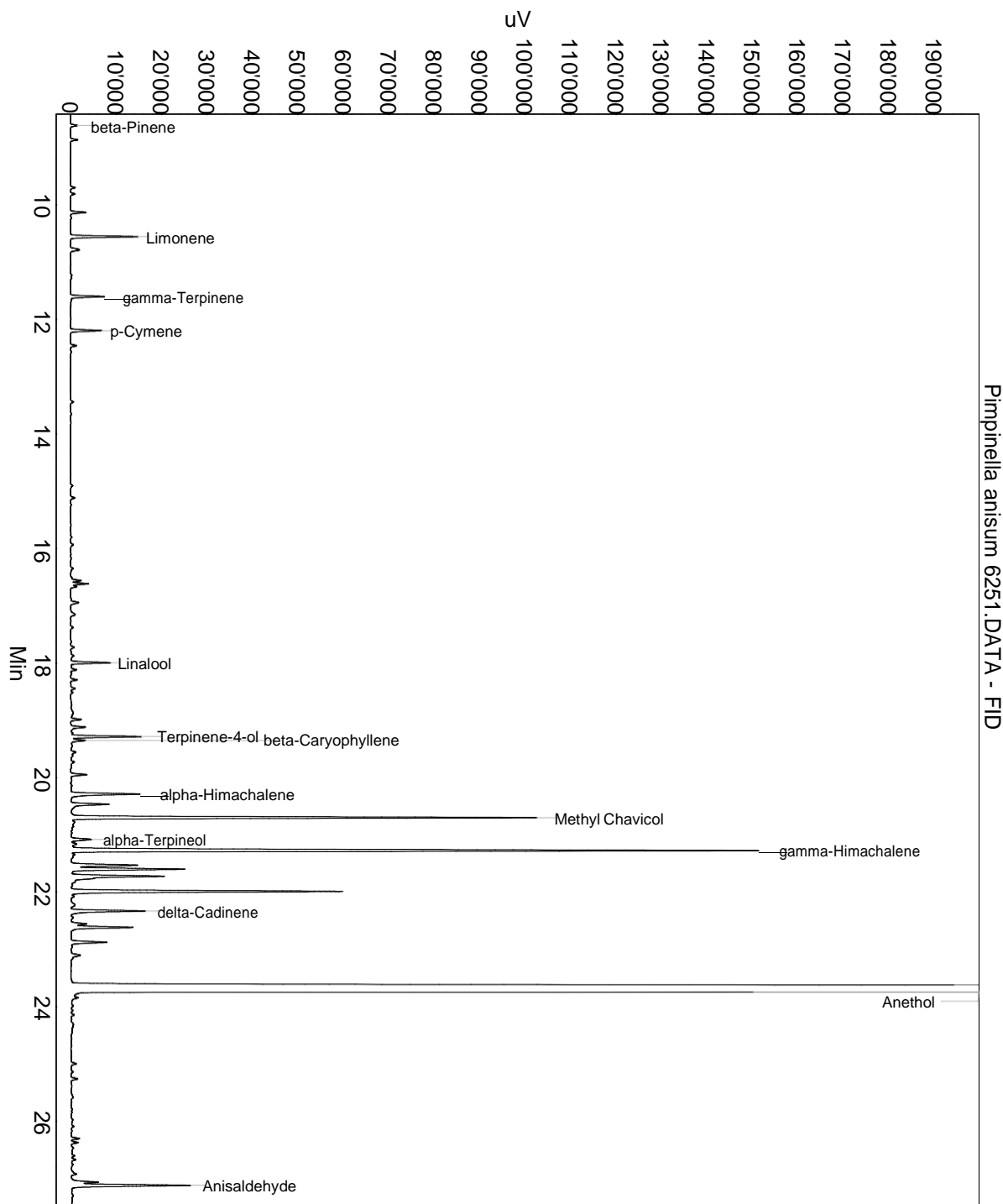
Lot: 6251

Date of analysis: 24.02.2020 19:34:38

System: GC-430 FID

Column: BGB Wax 60m / 0.25mm / 0.25um

Method: 180306 essential basis 60min



This data sheet was issued to the best of our knowledge and is supplied without warranty for its correctness or accuracy.

Certificate of Analysis

Product: **Pimpinella anisum 6251**

Lot: 6251

Date of analysis: 24.02.2020 19:34:38

System: GC-430 FID

Column: BGB Wax 60m / 0.25mm / 0.25um

Method: 180306 essential basis 60min

Index	Name	Time [Min]	Area [uV.Min]	Area % [%]	Allergene
1	alpha-Pinene	6.99	37.9	0.024	
2	beta-Pinene	8.62	46.6	0.029	
3		8.87	47.7	0.030	
4		10.13	102.9	0.065	
5	Limonene	10.56	451.0	0.285	Directive 2003/15EC (7th)
6		10.79	86.7	0.055	
7	gamma-Terpinene	11.60	233.2	0.147	
8	p-Cymene	12.20	213.2	0.135	
9		12.46	42.0	0.027	
10		16.56	62.1	0.039	
11		16.62	93.2	0.059	
12		16.94	75.7	0.048	
13	Linalool	17.99	262.4	0.166	Directive 2003/15EC (7th)
14		18.12	55.6	0.035	
15		18.29	42.8	0.027	
16		18.99	68.0	0.043	
17		19.12	113.5	0.072	
18	Terpinene-4-ol	19.28	491.0	0.310	
19	beta-Caryophyllene	19.35	104.6	0.066	
20		19.55	59.7	0.038	
21		19.95	114.7	0.072	
22	alpha-Himachalene	20.29	560.5	0.354	
23		20.46	320.7	0.203	
24	Methyl Chavicol	20.70	3245.1	2.051	
25	alpha-Terpineol	21.08	168.6	0.107	
26		21.16	49.9	0.032	
27	gamma-Himachalene	21.28	5323.5	3.364	
28		21.34	46.7	0.029	
29		21.53	524.8	0.332	
30		21.60	878.2	0.555	
31		21.72	899.7	0.569	
32		21.99	2054.6	1.298	
33	delta-Cadinene	22.33	603.3	0.381	
34		22.55	121.4	0.077	
35		22.62	496.5	0.314	
36		22.87	297.2	0.188	
37		23.10	112.3	0.071	
38	Anethol	23.73	136651.9	86.356	

This data sheet was issued to the best of our knowledge and is supplied without warranty for its correctness or accuracy.

Certificate of Analysis

Product: **Pimpinella anisum 6251**

Lot: 6251

Date of analysis: 24.02.2020 19:34:38

System: GC-430 FID

Column: BGB Wax 60m / 0.25mm / 0.25um

Method: 180306 essential basis 60min

Index	Name	Time [Min]	Area [uV.Min]	Area % [%]	Allergene
39		25.00	40.7	0.026	
40		25.26	49.8	0.031	
41		26.30	55.1	0.035	
42		26.37	45.8	0.029	
43	Anisaldehyde	27.12	677.5	0.428	
44		28.46	100.3	0.063	
45		28.96	337.3	0.213	
46		29.18	148.0	0.094	
47		29.41	163.2	0.103	
48		30.20	53.7	0.034	
49		30.92	109.0	0.069	
50	2-Methylbutyrate isoeugenyl	39.14	1023.1	0.647	
51		45.38	279.4	0.177	
Total			158242.2	100.000	

This data sheet was issued to the best of our knowledge and is supplied without warranty for its correctness or accuracy.