

Certificate of Analysis

Product: **Pinus mugo organic 2601**

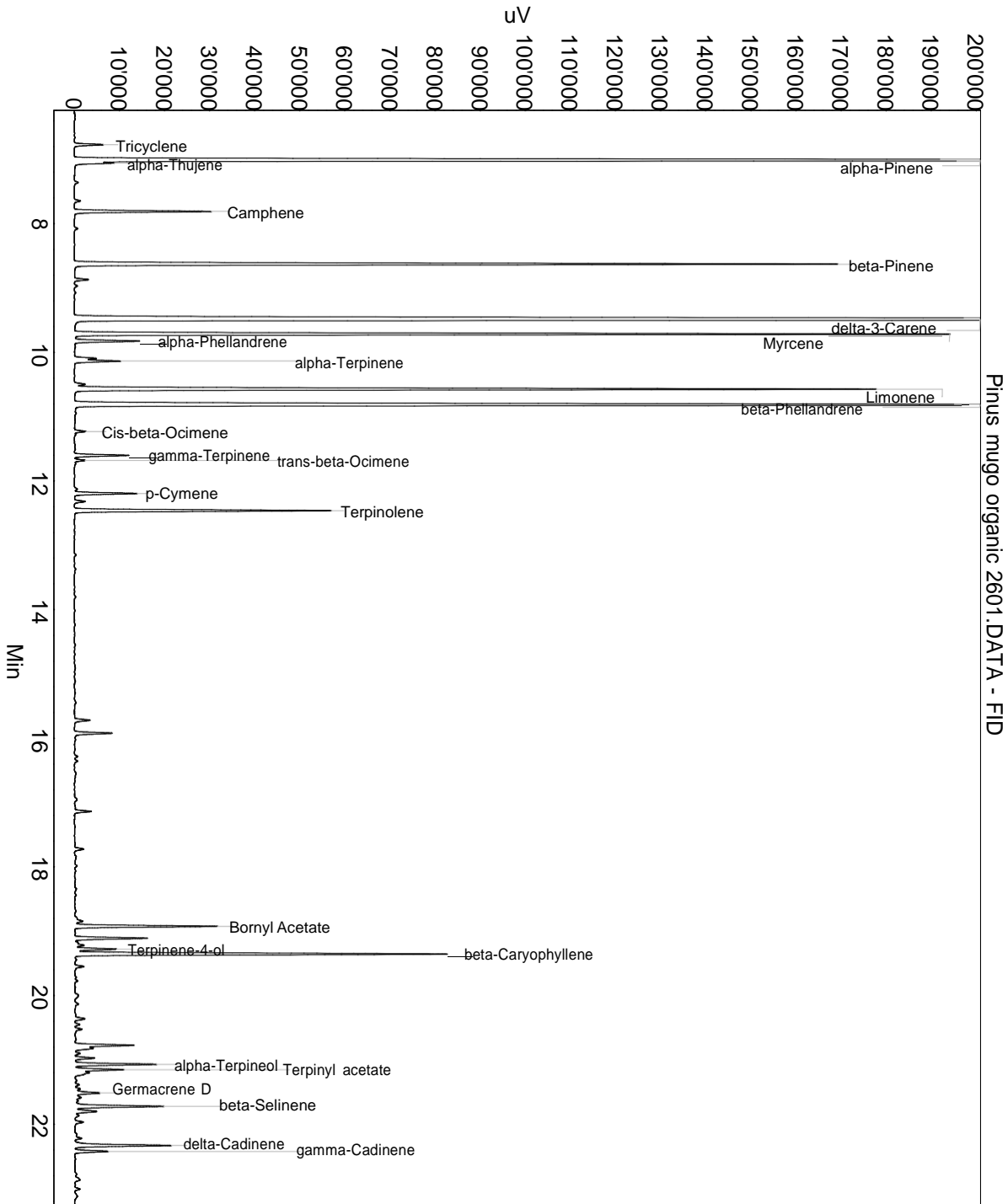
Lot: 2601

Date of analysis: 23.09.2020 18:34:10

System: GC-430 FID

Column: BGB Wax 60m / 0.25mm / 0.25um

Method: 180306 essential basis 60min



This data sheet was issued to the best of our knowledge and is supplied without warranty for its correctness or accuracy.

Certificate of Analysis

Product: **Pinus mugo organic 2601**

Lot: 2601

Date of analysis: 23.09.2020 18:34:10

System: GC-430 FID

Column: BGB Wax 60m / 0.25mm / 0.25um

Method: 180306 essential basis 60min

Index	Name	Time [Min]	Area [uV.Min]	Area % [%]	Allergene
1	Tricyclene	6.77	186.7	0.272	
2	alpha-Pinene	7.02	11577.4	16.850	
3	alpha-Thujene	7.06	53.1	0.077	
4		7.36	25.9	0.038	
5		7.65	40.3	0.059	
6	Camphene	7.81	902.3	1.313	
7		8.08	23.6	0.034	
8	beta-Pinene	8.63	5234.9	7.619	
9		8.87	92.5	0.135	
10	delta-3-Carene	9.49	16875.1	24.561	
11	Myrcene	9.72	5682.8	8.271	
12	alpha-Phellandrene	9.83	448.2	0.652	
13		10.09	143.9	0.209	
14	alpha-Terpinene	10.14	318.1	0.463	
15		10.50	78.0	0.114	
16	Limonene	10.57	5615.3	8.173	Directive 2003/15EC (7th)
17	beta-Phellandrene	10.82	8759.2	12.749	
18	Cis-beta-Ocimene	11.23	74.3	0.108	
19	gamma-Terpinene	11.60	362.0	0.527	
20	trans-beta-Ocimene	11.68	66.6	0.097	
21	p-Cymene	12.20	419.0	0.610	
22		12.32	72.5	0.106	
23	Terpinolene	12.46	1727.5	2.514	
24		15.72	116.7	0.170	
25		15.92	273.3	0.398	
26		17.14	111.9	0.163	
27		17.72	70.9	0.103	
28		18.85	73.4	0.107	
29	Bornyl Acetate	18.92	988.0	1.438	
30		19.11	512.8	0.746	
31		19.22	91.5	0.133	
32	Terpinene-4-ol	19.28	292.0	0.425	
33	beta-Caryophyllene	19.36	2668.8	3.884	
34		19.44	17.3	0.025	
35		19.55	74.1	0.108	
36		20.36	83.2	0.121	
37		20.45	36.3	0.053	
38		20.52	59.3	0.086	

This data sheet was issued to the best of our knowledge and is supplied without warranty for its correctness or accuracy.

Certificate of Analysis

Product: **Pinus mugo organic 2601**

Lot: 2601

Date of analysis: 23.09.2020 18:34:10

System: GC-430 FID

Column: BGB Wax 60m / 0.25mm / 0.25um

Method: 180306 essential basis 60min

Index	Name	Time [Min]	Area [uV.Min]	Area % [%]	Allergene
39		20.77	581.9	0.847	
40		20.90	33.4	0.049	
41		20.97	130.3	0.190	
42	alpha-Terpineol	21.07	560.0	0.815	
43	Terpinyl acetate	21.15	312.8	0.455	
44		21.39	27.2	0.040	
45		21.45	34.0	0.050	
46	Germacrene D	21.52	199.6	0.291	
47		21.59	55.4	0.081	
48		21.64	22.9	0.033	
49	beta-Selinene	21.72	687.0	1.000	
50		21.80	187.2	0.273	
51		21.87	33.7	0.049	
52		21.97	67.8	0.099	
53		22.22	38.8	0.056	
54	delta-Cadinene	22.33	715.7	1.042	
55	gamma-Cadinene	22.42	235.2	0.342	
56		23.01	33.9	0.049	
57		23.40	26.9	0.039	
58		23.57	38.6	0.056	
59		23.73	45.5	0.066	
60		23.83	39.3	0.057	
61		26.45	63.6	0.093	
62		28.56	35.1	0.051	
63		29.34	35.5	0.052	
64		29.63	40.3	0.059	
65		29.73	67.3	0.098	
66		29.89	51.1	0.074	
67		30.49	58.9	0.086	
Total			68707.2	100.000	

This data sheet was issued to the best of our knowledge and is supplied without warranty for its correctness or accuracy.