

Certificate of Analysis

Product: **Pinus sylvestris organic 5571**

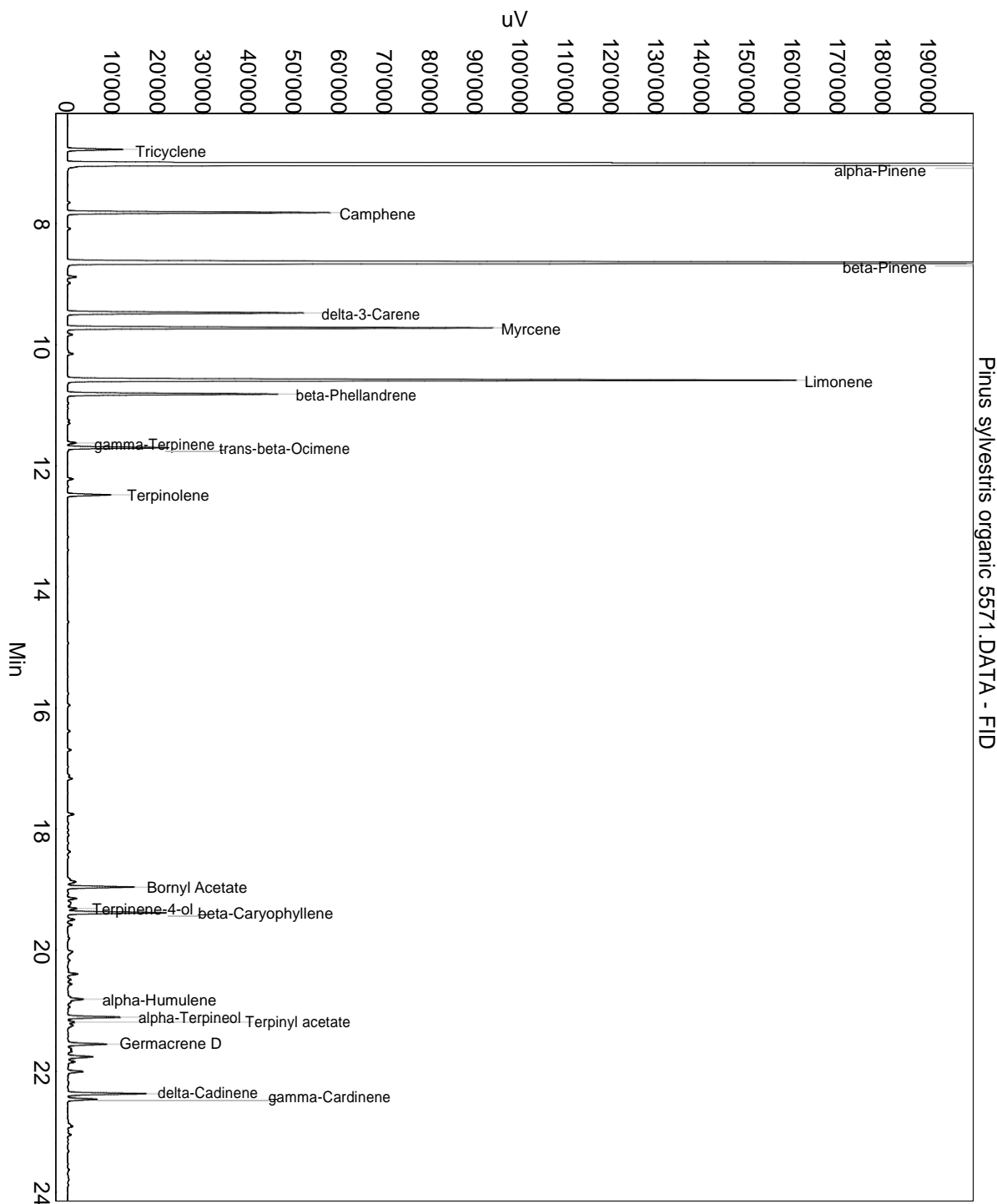
Lot: 5571

Date of analysis: 09.10.2019 09:36:22

System: GC-430 FID

Column: BGB Wax 60m / 0.25mm / 0.25um

Method: 180306 essential basis 60min



This data sheet was issued to the best of our knowledge and is supplied without warranty for its correctness or accuracy.

Certificate of Analysis

Product: Pinus sylvestris organic 5571

Lot: 5571

Date of analysis: 09.10.2019 09:36:22

System: GC-430 FID

Column: BGB Wax 60m / 0.25mm / 0.25um

Method: 180306 essential basis 60min

Index	Name	Time [Min]	Area [uV.Min]	Area % [%]	Allergene
1	Tricyclene	6.78	349.8	0.715	
2	alpha-Pinene	7.03	19398.2	39.654	
3		7.65	18.5	0.038	
4	Camphene	7.82	1696.8	3.469	
5	beta-Pinene	8.65	11425.0	23.355	
6		8.88	60.2	0.123	
7		8.98	20.6	0.042	
8	delta-3-Carene	9.48	1556.8	3.182	
9	Myrcene	9.72	2659.9	5.437	
10		9.83	35.3	0.072	
11		10.15	46.9	0.096	
12	Limonene	10.59	5002.1	10.225	Directive 2003/15EC (7th)
13	beta-Phellandrene	10.82	1405.1	2.872	
14		11.30	32.3	0.066	
15	gamma-Terpinene	11.62	62.3	0.127	
16	trans-beta-Ocimene	11.70	650.6	1.330	
17		12.22	39.0	0.080	
18	Terpinolene	12.48	294.9	0.603	
19		15.96	20.2	0.041	
20		16.38	17.5	0.036	
21		16.69	23.8	0.049	
22		17.17	27.4	0.056	
23		17.76	51.6	0.105	
24		18.87	87.0	0.178	
25	Bornyl Acetate	18.96	458.7	0.938	
26		19.15	62.9	0.129	
27		19.21	48.3	0.099	
28	Terpinene-4-ol	19.31	69.3	0.142	
29	beta-Caryophyllene	19.38	688.0	1.406	
30		19.50	54.3	0.111	
31		19.58	34.5	0.071	
32		20.03	53.8	0.110	
33		20.39	70.8	0.145	
34		20.49	23.6	0.048	
35		20.56	32.7	0.067	
36	alpha-Humulene	20.81	158.4	0.324	
37	alpha-Terpineol	21.11	381.1	0.779	
38	Terpinyl acetate	21.19	48.9	0.100	

This data sheet was issued to the best of our knowledge and is supplied without warranty for its correctness or accuracy.

Certificate of Analysis

Product: **Pinus sylvestris organic 5571**

Lot: 5571

Date of analysis: 09.10.2019 09:36:22

System: GC-430 FID

Column: BGB Wax 60m / 0.25mm / 0.25um

Method: 180306 essential basis 60min

Index	Name	Time [Min]	Area [uV.Min]	Area % [%]	Allergene
39		21.24	51.8	0.106	
40	Germacrene D	21.55	292.6	0.598	
41		21.67	63.7	0.130	
42		21.76	201.0	0.411	
43		21.85	65.5	0.134	
44		22.01	115.1	0.235	
45	delta-Cadinene	22.37	546.9	1.118	
46	gamma-Cardinene	22.46	207.1	0.423	
47		23.05	23.0	0.047	
48		26.50	29.0	0.059	
49		28.60	27.0	0.055	
50		29.39	35.4	0.072	
51		29.68	37.3	0.076	
52		30.54	56.5	0.116	
Total			48919.0	100.000	

This data sheet was issued to the best of our knowledge and is supplied without warranty for its correctness or accuracy.