

Certificate of Analysis

Product: **Piper nigrum organic 7571**

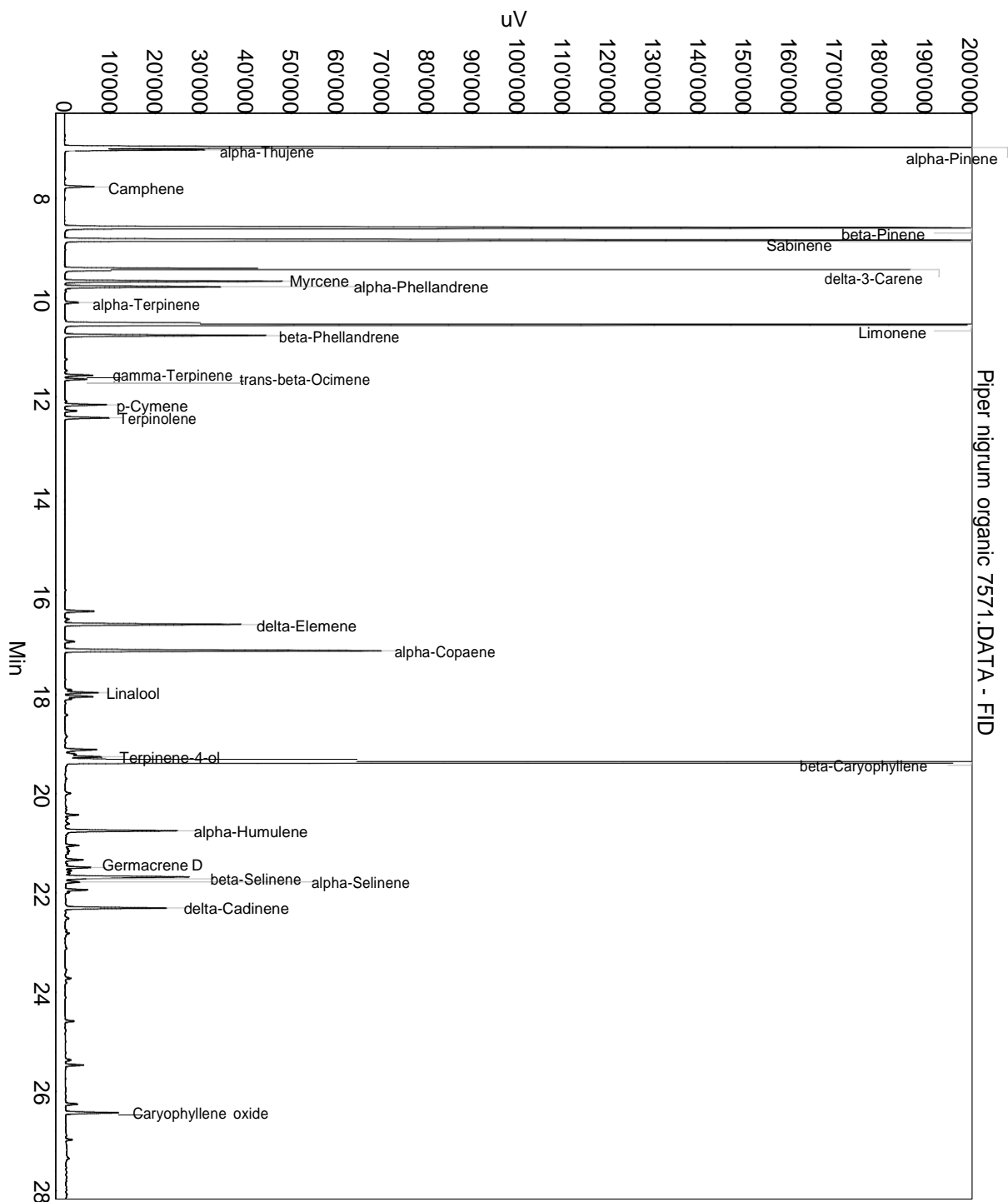
Lot: 7571

Date of analysis: 19.10.2020 15:22:08

System: GC-430 FID

Column: BGB Wax 60m / 0.25mm / 0.25um

Method: 180306 essential basis 60min



This data sheet was issued to the best of our knowledge and is supplied without warranty for its correctness or accuracy.

Certificate of Analysis

Product: **Piper nigrum organic 7571**

Lot: 7571

Date of analysis: 19.10.2020 15:22:08

System: GC-430 FID

Column: BGB Wax 60m / 0.25mm / 0.25um

Method: 180306 essential basis 60min

Index	Name	Time [Min]	Area [uV.Min]	Area % [%]	Allergene
1	alpha-Pinene	6.98	7096.2	10.005	
2	alpha-Thujene	7.02	535.7	0.755	
3	Camphene	7.77	196.6	0.277	
4	beta-Pinene	8.60	6704.4	9.453	
5	Sabinene	8.85	7438.5	10.488	
6	delta-3-Carene	9.44	5741.7	8.095	
7	Myrcene	9.67	1344.0	1.895	
8	alpha-Phellandrene	9.78	1044.6	1.473	
9	alpha-Terpinene	10.10	98.5	0.139	
10	Limonene	10.55	10400.8	14.664	Directive 2003/15EC (7th)
11	beta-Phellandrene	10.77	1335.4	1.883	
12	gamma-Terpinene	11.57	188.1	0.265	
13	trans-beta-Ocimene	11.65	144.2	0.203	
14	p-Cymene	12.16	282.3	0.398	
15		12.29	81.3	0.115	
16	Terpinolene	12.42	302.5	0.427	
17		16.32	210.9	0.297	
18		16.48	32.1	0.045	
19	delta-Elemene	16.59	1177.5	1.660	
20		16.93	73.1	0.103	
21	alpha-Copaene	17.12	2210.6	3.117	
22		17.91	47.5	0.067	
23	Linalool	17.96	216.3	0.305	Directive 2003/15EC (7th)
24		18.04	239.2	0.337	
25		18.41	20.2	0.028	
26		19.11	242.8	0.342	
27		19.21	71.8	0.101	
28	Terpinene-4-ol	19.26	234.3	0.330	
29	beta-Caryophyllene	19.37	18393.6	25.933	
30		19.99	48.2	0.068	
31		20.43	84.8	0.120	
32		20.50	16.8	0.024	
33	alpha-Humulene	20.75	824.0	1.162	
34		21.04	95.5	0.135	
35		21.11	19.4	0.027	
36		21.16	54.9	0.077	
37		21.33	140.4	0.198	
38	Germacrene D	21.49	184.4	0.260	

This data sheet was issued to the best of our knowledge and is supplied without warranty for its correctness or accuracy.

Certificate of Analysis

Product: **Piper nigrum organic 7571**

Lot: 7571

Date of analysis: 19.10.2020 15:22:08

System: GC-430 FID

Column: BGB Wax 60m / 0.25mm / 0.25um

Method: 180306 essential basis 60min

Index	Name	Time [Min]	Area [uV.Min]	Area % [%]	Allergene
39		21.55	44.3	0.062	
40		21.61	32.9	0.046	
41		21.68	1049.5	1.480	
42	beta-Selinene	21.72	42.0	0.059	
43	alpha-Selinene	21.78	104.3	0.147	
44		21.94	150.3	0.212	
45		21.99	23.3	0.033	
46	delta-Cadinene	22.30	710.2	1.001	
47		22.51	37.1	0.052	
48		22.81	35.0	0.049	
49		23.72	44.3	0.063	
50		24.58	60.8	0.086	
51		25.37	47.2	0.067	
52		25.47	126.8	0.179	
53		26.25	88.7	0.125	
54	Caryophyllene oxide	26.43	387.1	0.546	
55		26.97	41.9	0.059	
56		28.53	35.6	0.050	
57		29.59	49.9	0.070	
58		29.79	113.2	0.160	
59		30.88	129.1	0.182	
Total			70926.2	100.000	

This data sheet was issued to the best of our knowledge and is supplied without warranty for its correctness or accuracy.