

Certificate of Analysis

Product: **Rosmarinus officinalis organic 6133**

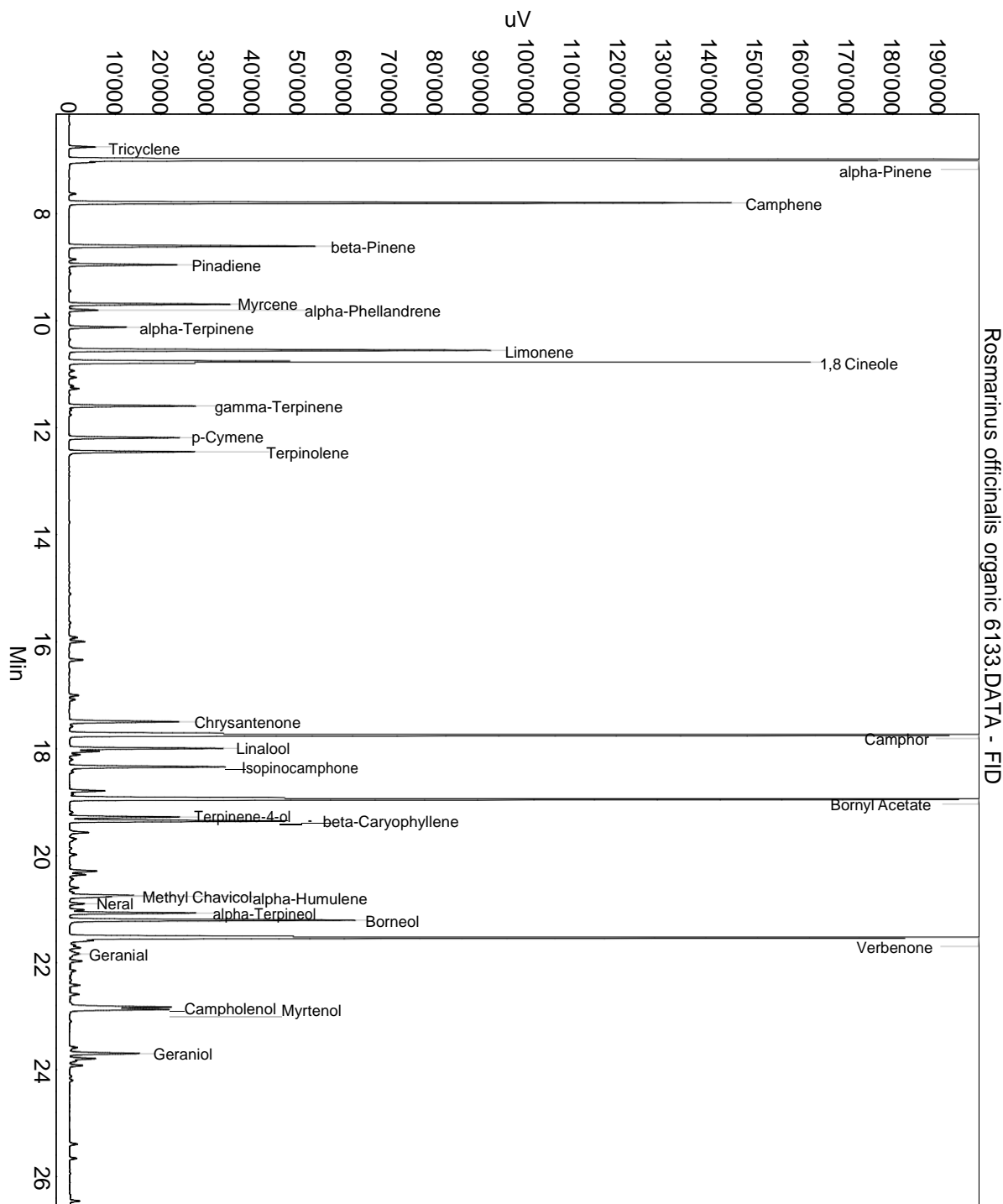
Lot: 6133

Date of analysis: 12.02.2020 12:59:58

System: GC-430 FID

Column: BGB Wax 60m / 0.25mm / 0.25um

Method: 180306 essential basis 60min



This data sheet was issued to the best of our knowledge and is supplied without warranty for its correctness or accuracy.

Certificate of Analysis

Product: **Rosmarinus officinalis organic 6133**

Lot: 6133

Date of analysis: 12.02.2020 12:59:58

System: GC-430 FID

Column: BGB Wax 60m / 0.25mm / 0.25um

Method: 180306 essential basis 60min

Index	Name	Time [Min]	Area [uV.Min]	Area % [%]	Allergene
1		6.06	20.9	0.028	
2	Tricyclene	6.75	165.4	0.219	
3	alpha-Pinene	7.00	12577.7	16.686	
4		7.63	44.7	0.059	
5	Camphene	7.80	4242.5	5.628	
6	beta-Pinene	8.61	1606.9	2.132	
7		8.85	45.3	0.060	
8	Pinadiene	8.95	707.0	0.938	
9	Myrcene	9.69	997.7	1.324	
10	alpha-Phellandrene	9.80	193.9	0.257	
11	alpha-Terpinene	10.12	380.5	0.505	
12	Limonene	10.55	2832.5	3.758	Directive 2003/15EC (7th)
13	1,8 Cineole	10.78	5306.5	7.040	
14		10.94	37.1	0.049	
15		11.06	50.8	0.067	
16		11.22	28.8	0.038	
17		11.27	63.2	0.084	
18	gamma-Terpinene	11.59	835.5	1.108	
19	p-Cymene	12.19	735.8	0.976	
20	Terpinolene	12.45	853.1	1.132	
21		15.92	66.6	0.088	
22		16.00	112.1	0.149	
23		16.34	100.3	0.133	
24		17.00	67.1	0.089	
25		17.08	52.2	0.069	
26	Chrysentenone	17.50	855.7	1.135	
27	Camphor	17.75	11414.3	15.143	
28	Linalool	17.99	1021.3	1.355	Directive 2003/15EC (7th)
29		18.05	214.1	0.284	
30		18.11	100.1	0.133	
31	Isopinocamphone	18.34	1208.6	1.603	
32		18.79	257.7	0.342	
33		18.85	27.4	0.036	
34	Bornyl Acetate	18.95	9065.9	12.027	
35	Terpinene-4-ol	19.28	747.9	0.992	
36	beta-Caryophyllene	19.35	1638.4	2.174	
37		19.57	156.1	0.207	
38		19.69	74.4	0.099	

This data sheet was issued to the best of our knowledge and is supplied without warranty for its correctness or accuracy.

Certificate of Analysis

Product: **Rosmarinus officinalis organic 6133**

Lot: 6133

Date of analysis: 12.02.2020 12:59:58

System: GC-430 FID

Column: BGB Wax 60m / 0.25mm / 0.25um

Method: 180306 essential basis 60min

Index	Name	Time [Min]	Area [uV.Min]	Area % [%]	Allergene
39		19.98	58.8	0.078	
40		20.29	226.6	0.301	
41		20.35	116.4	0.154	
42		20.44	38.3	0.051	
43		20.60	67.6	0.090	
44		20.69	28.9	0.038	
45	Methyl Chavicol	20.75	458.2	0.608	
46	alpha-Humulene	20.76	209.8	0.278	
47	Neral	20.90	111.7	0.148	(= Citral) Directive 2003/15EC (7th)
48		21.01	97.0	0.129	
49	alpha-Terpineol	21.07	862.0	1.144	
50	Borneol	21.21	2062.2	2.736	
51	Verbenone	21.53	8612.2	11.425	
52		21.59	200.8	0.266	
53		21.68	38.5	0.051	
54		21.73	72.2	0.096	
55		21.82	18.6	0.025	
56	Geranial	21.84	80.2	0.106	(= Citral) Directive 2003/15EC (7th)
57		21.98	98.5	0.131	
58		22.16	50.9	0.068	
59		22.42	70.1	0.093	
60		22.60	74.0	0.098	
61	Campholenol	22.83	773.7	1.026	
62	Myrtenol	22.87	738.4	0.980	
63		23.59	71.9	0.095	
64	Geraniol	23.70	552.0	0.732	Directive 2003/15EC (7th)
65		23.79	247.9	0.329	
66		23.92	102.4	0.136	
67		25.39	65.9	0.087	
68		25.66	50.9	0.068	
69		26.46	64.8	0.086	
70		33.18	150.0	0.199	
Total			75377.4	100.000	

This data sheet was issued to the best of our knowledge and is supplied without warranty for its correctness or accuracy.