

Certificate of Analysis

Product: **Salvia officinalis 1857**

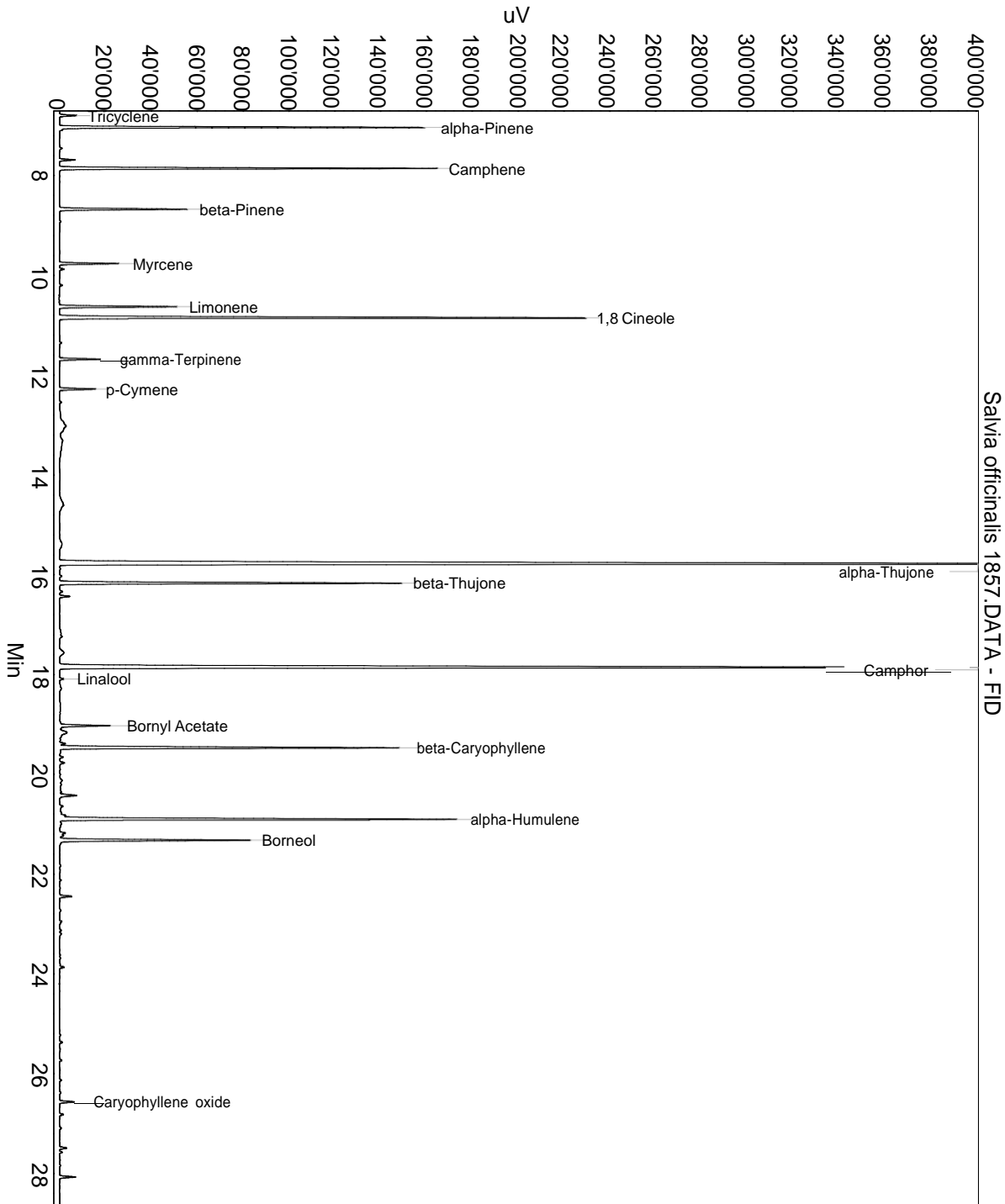
Lot: 1857

Date of analysis: 29.03.2017 15:40:12

System: GC-430 FID

Column: BGB Wax 60m / 0.25mm / 0.25um

Method: 160404 Salvia officinalis



This data sheet was issued to the best of our knowledge and is supplied without warranty for its correctness or accuracy.

Certificate of Analysis

Product: **Salvia officinalis 1857**

Lot: 1857

Date of analysis: 29.03.2017 15:40:12

System: GC-430 FID

Column: BGB Wax 60m / 0.25mm / 0.25um

Method: 160404 Salvia officinalis

Index	Name	Time [Min]	Area [uV.Min]	Area % [%]	Allergene
1	Tricyclene	6.80	223.1	0.274	
2	alpha-Pinene	7.04	4542.2	5.587	
3		7.69	203.1	0.250	
4	Camphene	7.86	4923.4	6.055	
5	beta-Pinene	8.68	1690.7	2.079	
6	Myrcene	9.77	742.0	0.913	
7	Limonene	10.63	1584.8	1.949	Directive 2003/15EC (7th)
8	1,8 Cineole	10.85	7704.9	9.476	
9	gamma-Terpinene	11.68	547.4	0.673	
10	p-Cymene	12.28	489.1	0.602	
11	alpha-Thujone	15.78	21985.2	27.040	
12	beta-Thujone	16.17	4875.4	5.996	
13	Camphor	17.86	16408.9	20.182	
14	Linalool	18.09	55.5	0.068	Directive 2003/15EC (7th)
15		18.28	52.3	0.064	
16	Bornyl Acetate	19.03	706.7	0.869	
17	beta-Caryophyllene	19.47	5048.6	6.209	
18		20.43	280.1	0.344	
19	alpha-Humulene	20.90	6064.5	7.459	
20	Borneol	21.32	2738.5	3.368	
21	Caryophyllene oxide	26.56	210.1	0.258	
22		28.07	230.2	0.283	
Total			81306.6	100.000	

This data sheet was issued to the best of our knowledge and is supplied without warranty for its correctness or accuracy.