

# Certificate of Analysis

Product: **Salvia officinalis organic 2393**

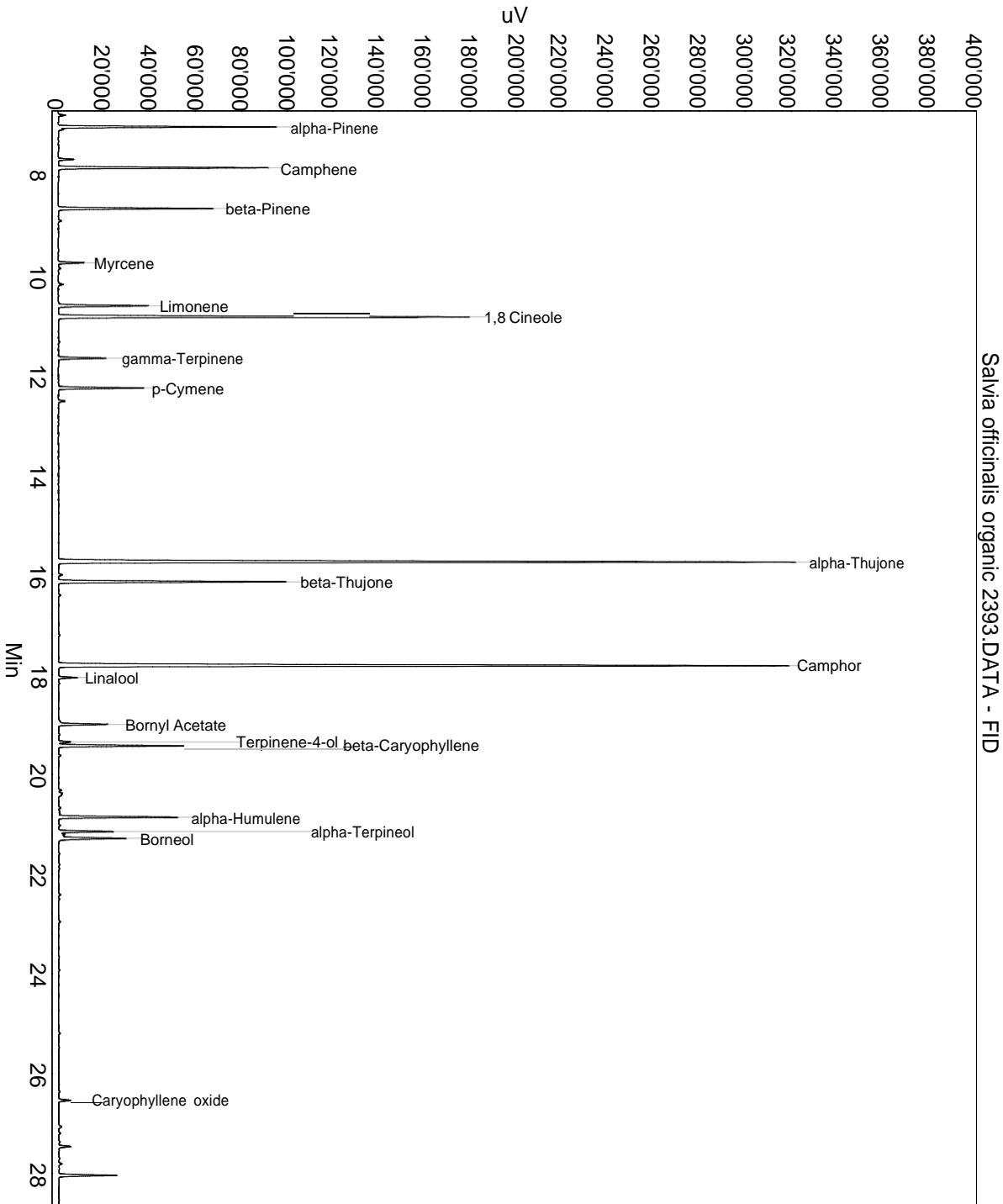
Lot: 2393

Date of analysis: 27.06.2018 20:16:16

System: GC-430 FID

Column: BGB Wax 60m / 0.25mm / 0.25um

Method: 120102 essential basis 60



This data sheet was issued to the best of our knowledge and is supplied without warranty for its correctness or accuracy.

## Certificate of Analysis

Product: **Salvia officinalis organic 2393**

Lot: 2393

Date of analysis: 27.06.2018 20:16:16

System: GC-430 FID

Column: BGB Wax 60m / 0.25mm / 0.25um

Method: 120102 essential basis 60

Index	Name	Time [Min]	Area [uV.Min]	Area % [%]	Allergene
1	alpha-Pinene	7.02	2708.2	5.259	
2		7.68	199.7	0.388	
3	Camphene	7.84	2709.8	5.262	
4	beta-Pinene	8.66	2045.7	3.973	
5	Myrcene	9.75	328.9	0.639	
6	Limonene	10.61	1222.9	2.375	Directive 2003/15EC (7th)
7	1,8 Cineole	10.83	5852.1	11.365	
8	gamma-Terpinene	11.66	636.5	1.236	
9	p-Cymene	12.26	1133.6	2.202	
10		12.52	88.7	0.172	
11	alpha-Thujone	15.75	11881.2	23.073	
12	beta-Thujone	16.14	3212.5	6.239	
13	Camphor	17.82	11830.9	22.976	
14	Linalool	18.06	257.2	0.499	Directive 2003/15EC (7th)
15	Bornyl Acetate	19.00	689.1	1.338	
16	Terpinene-4-ol	19.35	166.9	0.324	
17	beta-Caryophyllene	19.43	1733.9	3.367	
18	alpha-Humulene	20.86	1659.0	3.222	
19	alpha-Terpineol	21.15	752.4	1.461	
20		21.20	100.5	0.195	
21	Borneol	21.28	1092.2	2.121	
22		22.41	35.5	0.069	
23	Caryophyllene oxide	26.53	170.4	0.331	
24		27.46	172.1	0.334	
25		28.04	813.1	1.579	
Total			51492.9	100.000	

This data sheet was issued to the best of our knowledge and is supplied without warranty for its correctness or accuracy.