

Certificate of Analysis

Product: **Zingiber officinale organic 6971**

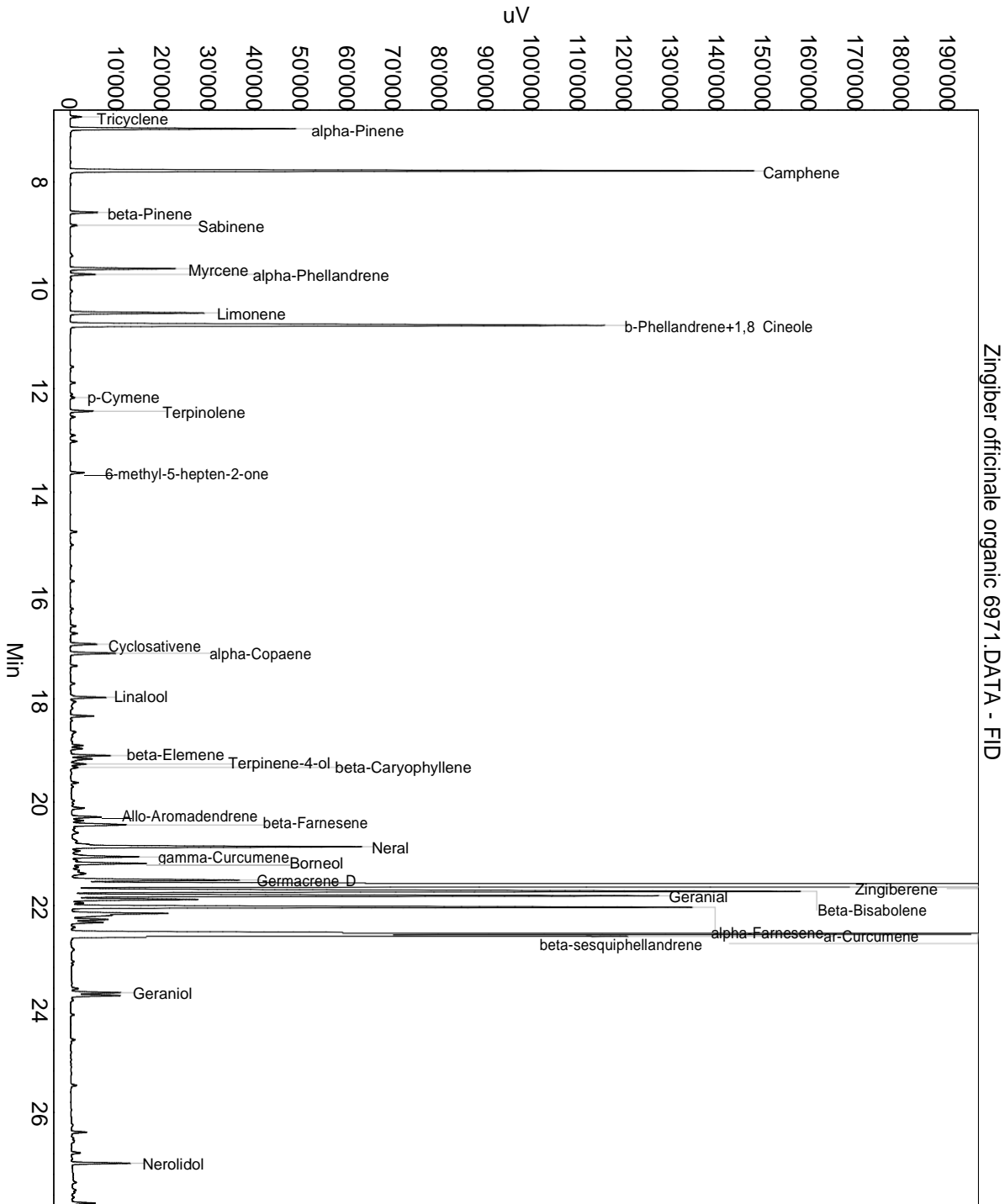
Lot: 6971

Date of analysis: 22.06.2020 17:29:18

System: GC-430 FID

Column: BGB Wax 60m / 0.25mm / 0.25um

Method: 180306 essential basis 60min



This data sheet was issued to the best of our knowledge and is supplied without warranty for its correctness or accuracy.

Certificate of Analysis

Product: **Zingiber officinale organic 6971**

Lot: 6971

Date of analysis: 22.06.2020 17:29:18

System: GC-430 FID

Column: BGB Wax 60m / 0.25mm / 0.25um

Method: 180306 essential basis 60min

Index	Name	Time [Min]	Area [uV.Min]	Area % [%]	Allergene
1	Tricyclene	6.74	70.6	0.091	
2	alpha-Pinene	6.97	1348.9	1.734	
3	Camphene	7.79	4330.7	5.566	
4	beta-Pinene	8.59	183.5	0.236	
5	Sabinene	8.84	47.0	0.060	
6	Myrcene	9.68	644.8	0.829	
7	alpha-Phellandrene	9.79	165.4	0.213	
8	Limonene	10.53	883.7	1.136	Directive 2003/15EC (7th)
9	b-Phellandrene+1,8 Cineole	10.78	4617.9	5.935	
10		11.89	32.1	0.041	
11	p-Cymene	12.17	31.5	0.040	
12	Terpinolene	12.43	154.0	0.198	
13		12.55	32.1	0.041	
14		12.90	32.7	0.042	
15		13.02	45.9	0.059	
16	6-methyl-5-hepten-2-one	13.63	93.1	0.120	
17		14.77	44.1	0.057	
18		16.59	40.4	0.052	
19		16.73	51.7	0.066	
20	Cyclosativene	16.94	192.5	0.247	
21	alpha-Copaene	17.12	325.7	0.419	
22		17.36	44.7	0.057	
23		17.71	31.7	0.041	
24	Linalool	17.97	236.4	0.304	Directive 2003/15EC (7th)
25		18.05	50.3	0.065	
26		18.33	148.0	0.190	
27		18.64	44.2	0.057	
28		18.90	73.7	0.095	
29		18.96	71.3	0.092	
30	beta-Elemene	19.10	269.5	0.346	
31		19.16	178.4	0.229	
32	Terpinene-4-ol	19.26	108.5	0.139	
33	beta-Caryophyllene	19.33	53.8	0.069	
34		19.62	48.2	0.062	
35		20.11	91.1	0.117	
36	Allo-Aromadendrene	20.29	206.4	0.265	
37		20.36	78.7	0.101	
38	beta-Farnesene	20.44	500.3	0.643	

This data sheet was issued to the best of our knowledge and is supplied without warranty for its correctness or accuracy.

Certificate of Analysis

Product: **Zingiber officinale organic 6971**

Lot: 6971

Date of analysis: 22.06.2020 17:29:18

System: GC-430 FID

Column: BGB Wax 60m / 0.25mm / 0.25um

Method: 180306 essential basis 60min

Index	Name	Time [Min]	Area [uV.Min]	Area % [%]	Allergene
39		20.82	68.4	0.088	
40	Neral	20.86	1970.4	2.532	(= Citral) Directive 2003/15EC (7th)
41		20.94	48.5	0.062	
42	gamma-Curcumene	21.06	494.4	0.635	
43	Borneol	21.19	564.6	0.726	
44		21.26	45.1	0.058	
45		21.32	64.8	0.083	
46		21.38	134.0	0.172	
47	Germacrene D	21.51	1222.6	1.571	
48	Zingiberene	21.63	23241.5	29.870	
49	Beta-Bisabolene	21.73	6182.9	7.946	
50	Geranial	21.81	4027.7	5.176	(= Citral) Directive 2003/15EC (7th)
51		21.88	888.1	1.141	
52		21.95	77.5	0.100	
53	alpha-Farnesene	22.03	4452.0	5.722	
54		22.15	1018.0	1.308	
55		22.27	253.0	0.325	
56		22.33	217.5	0.280	
57		22.42	26.7	0.034	
58	beta-sesquiphellandrene	22.55	9327.6	11.988	
59	ar-Curcumene	22.60	3451.9	4.436	
60		23.61	47.1	0.060	
61	Geraniol	23.69	328.7	0.422	Directive 2003/15EC (7th)
62		23.74	344.8	0.443	
63		24.60	38.0	0.049	
64		25.48	42.0	0.054	
65		26.39	102.8	0.132	
66		26.78	65.8	0.085	
67	Nerolidol	26.99	372.2	0.478	
68		27.76	153.6	0.197	
69		28.05	192.2	0.247	
70		28.26	541.6	0.696	
71		28.71	67.5	0.087	
72		28.81	75.9	0.098	
73		28.88	28.4	0.036	
74		28.95	142.6	0.183	
75	Eugenol	29.30	79.9	0.103	Directive 2003/15EC (7th)
76		29.38	295.4	0.380	

This data sheet was issued to the best of our knowledge and is supplied without warranty for its correctness or accuracy.

Certificate of Analysis

Product: **Zingiber officinale organic 6971**

Lot: 6971

Date of analysis: 22.06.2020 17:29:18

System: GC-430 FID

Column: BGB Wax 60m / 0.25mm / 0.25um

Method: 180306 essential basis 60min

Index	Name	Time [Min]	Area [uV.Min]	Area % [%]	Allergene
77		29.49	95.9	0.123	
78		29.61	46.8	0.060	
79		29.68	40.9	0.053	
80		30.31	85.8	0.110	
81		30.40	58.5	0.075	
82		30.50	336.5	0.432	
83		30.60	35.6	0.046	
84		30.91	251.3	0.323	
85		31.11	66.9	0.086	
86		31.31	306.2	0.393	
87		33.22	185.2	0.238	
Total			77808.3	100.000	

This data sheet was issued to the best of our knowledge and is supplied without warranty for its correctness or accuracy.